

Rights-of-Way as Habitat Working Group

July 23, 2015

**THE
UNIVERSITY OF
ILLINOIS
AT
CHICAGO**



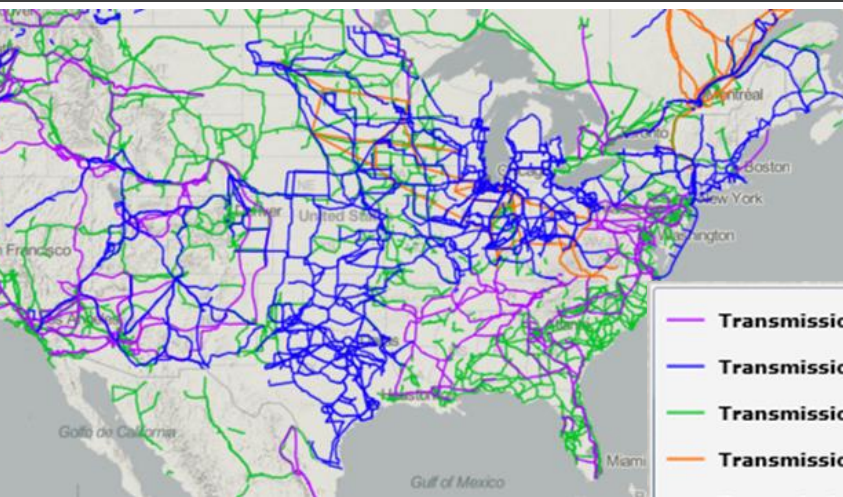
Research at UIC-ERC

- Research Areas: Distributed Generation, Ag&Bioenergy, Energy Efficiency, Utility Billing
- Intersection of ERC Energy and Bioenergy Land Use Research
- Extensive Databases of GIS Datalayers and Research Background:
 - Transmission, railroad, pipeline ROW
 - Data layer leverage from energy assurance project
- Land use and land use change analyses
 - Marginal lands analysis; multi-year project with Argonne National Laboratory
 - Productive lands including yield models and crop valuation
 - Data leverage from biofuels supply chain verification work



Data Tools:

Identify Designated Pollinator Habitat Sites Along ROW



Electric transmission lines >139 kV across the U.S.



NG Transmission Lines in the U.S.



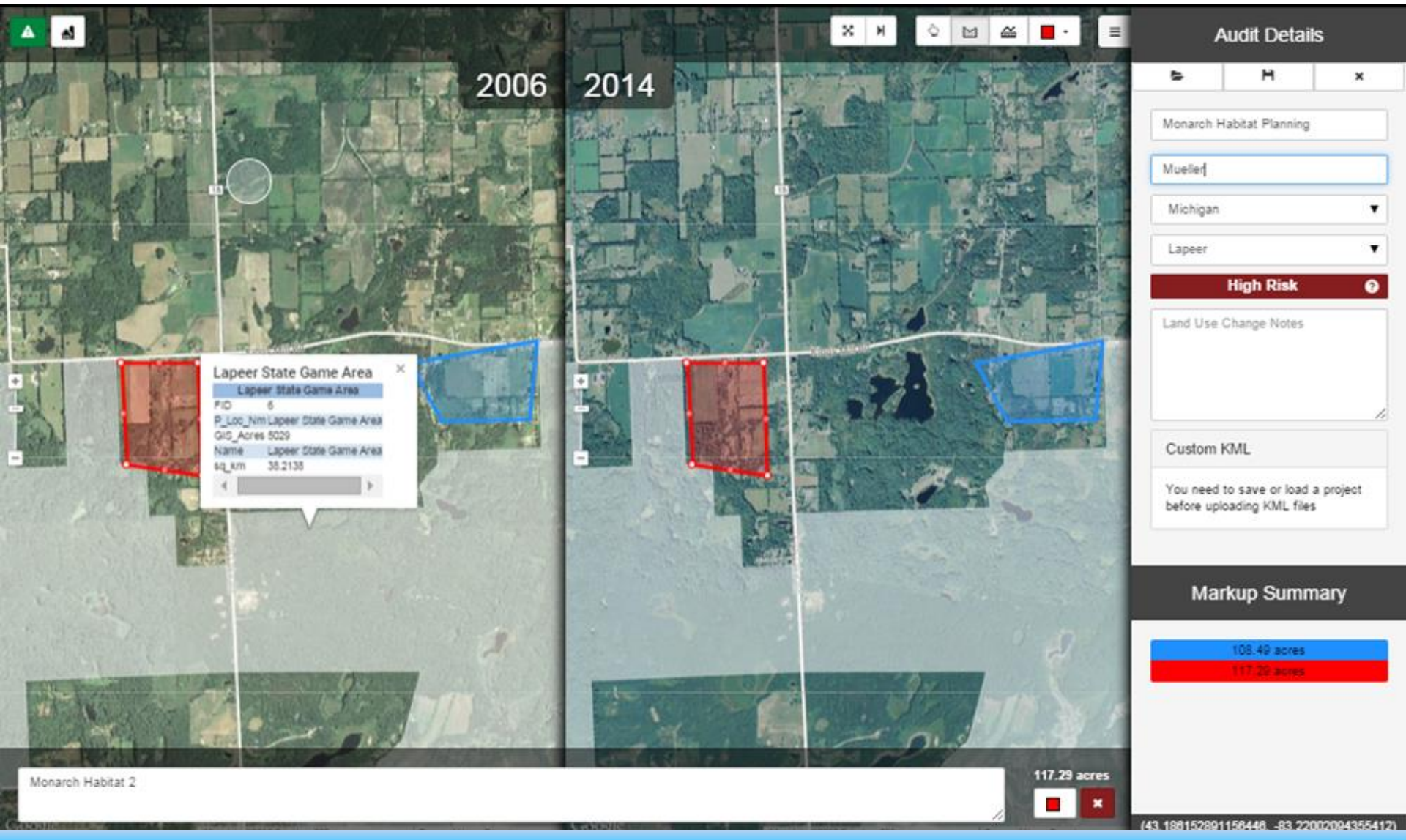
Data Tools:

Evaluate and Document Dedicated Habitat Additions

- UIC Patented Land Use tool that can be used for planning purposes
- Identify dedicated monarch habitat areas that can be protected
- Based on USDA National Agricultural Imaging Program Imagery
 - Includes all US wetlands/protected area GIS layers
 - Annotate, Measure, Save Parcels
- Used by biofuels producers exporting to European Union under land use verification mandate

Data Tools:

Evaluate and Document Dedicated Habitat Additions



Working Group

Going Forward:

- Contribution of Data and GIS Tools as a Technical Resource
- Facilitating of Rights-of-Way as Habitat Working Group Efforts

Rights-of-Way as Habitat Working Group

July 23, 2015

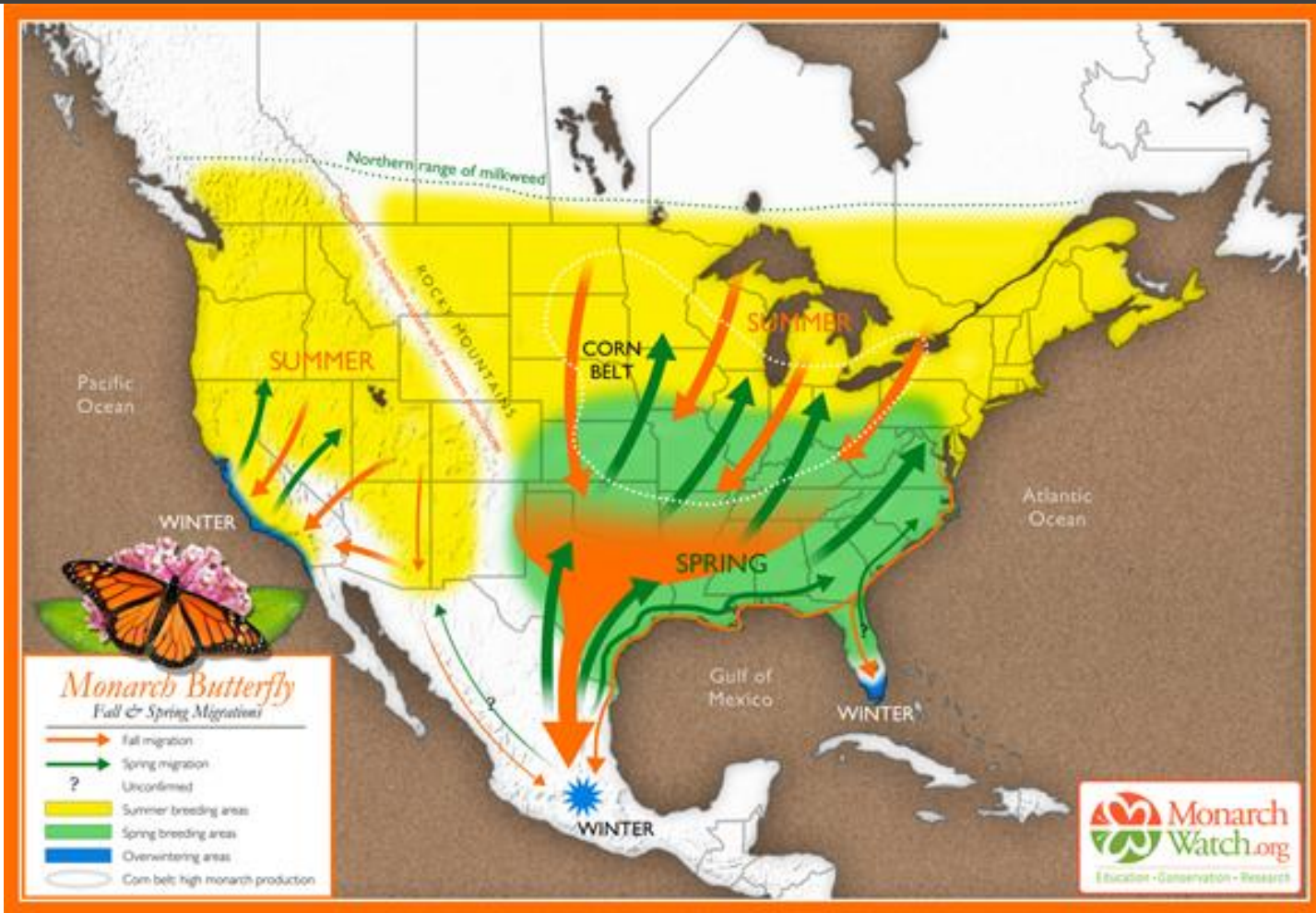
**THE
UNIVERSITY OF
ILLINOIS
AT
CHICAGO**



Thank you for participating!

2IM Group, LLC	Illinois Corn Growers Association	Public Service Commission of Wisconsin
AECOM	Illinois Department of Natural Resources	Quigg Engineering Inc.
Ameren	Illinois Department of Transportation	Sand County Foundation
American Electric Power	Illinois Tollway	South Dakota Department of Transportation
American Transmission Company	Iowa Department of Transportation	South Dakota State University
Association of Illinois Electric Cooperatives	Iowa Monarch Conservation Consortium	St. Croix National Scenic Riverway
BBJ Group, LLC	ITC Holdings Corp	Stantec
Bloom Township, Cook County, Illinois	IVM Partners, Inc.	The Conservation Foundation
Chicago Department of Transportation	Johnson County Secondary Road Department	The Field Museum
Clean Line Energy Partners, LLC	Kane-DuPage Soil and Water Conservation District	The Morton Arboretum
Clean Wisconsin	Linn County Secondary Road Department	The Pizzo Group
Commonwealth Edison	Metropolitan Mayors Caucus	Trees Forever
Consumers Energy	Metropolitan Water Reclamation District of Greater Chicago	U.S. Environmental Protection Agency
Dakota Lakes Research Farm	Michigan Department of Transportation	U.S. Fish & Wildlife Service
DTE Energy	MidAmerican Energy	UIC Energy Resources Center
Duke Energy	Miller Engineers & Scientists	UNI Tallgrass Prairie Center
Edison Electric Institute	Monsanto Company	Union Pacific
Elgin High School	National Fish and Wildlife Foundation	University of Illinois Extension
Environmental Consulting & Technology, Inc.	National Wildlife Federation	University of Illinois-Chicago
Exelon Generation	Natural Resources Defense Council	USDA Natural Resources Conservation Service
Federal Highway Administration	Neil Palmer & Associates LLC	We Energies
Garden Clubs of Illinois	North Cook County Soil & Water Conservation District	Westar Energy
Garfield Park Conservatory	Ohio Department of Transportation	Wisconsin Department of Natural Resources
Guardian Pipeline, LLC	Osage Inc	Wildlife Habitat Council
Huff & Huff, Inc.	Pheasants Forever	Wisconsin Department of Transportation
Illinois Association of Park Districts	Pollinator Partnership	Xcel Energy
		Xerces Society for Invertebrate Conservation

Monarch Butterfly Migration



Parallel Initiatives

- White House's Pollinator Health Task Force
- USGS Powell Center Monarch Conservation Science Partnership
- Monarch Joint Venture
- Keystone Policy Center Monarch Collaborative
- Iowa Monarch Conservation Consortium

So, what are we trying to do?



Mission

To provide a forum to collaborate and share ideas, best practices, and other information that promote successful habitat projects along rights-of-way.

Working Group Opportunities

- Organize meetings and workshops
- Assemble expertise and resources
- Communicate best practices
- Provide industry recognition
- Develop a unified message about the importance of habitat
- Encourage collaboration between land owners

Working Group Opportunities

- Support collaborative habitat initiatives, including tracking dedicated habitat projects

