

Rights-of-Way as Habitat: WORKING GROUP UPDATE

May 3, 2017

**THE
UNIVERSITY OF
ILLINOIS
AT
CHICAGO**



Working Group Snapshot

- Formed in 2015
- Semi-annual working group meetings
- Technical webinars
- 170+ organizations
- Cross-sector collaboration and knowledge-sharing



Mission

To engage diverse stakeholders in a collaborative environment that promotes pollinator habitats and healthy ecosystems along rights-of-way by providing expertise, cost-effective best management practices, and industry-driven tools and resources.



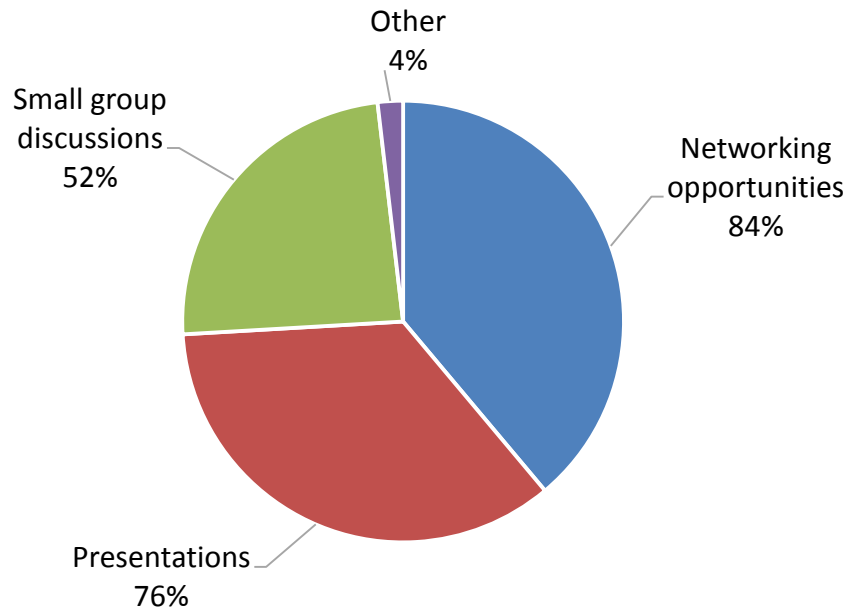
Objectives

1. **Educate** industry, government, landowners, and the public on methods and benefits of conserving and creating pollinator habitats along rights-of-way.
2. **Leverage** knowledge and resources ***across*** industry sectors.
3. **Provide a robust data clearinghouse** to report habitat acres, management costs, best management practice adoption rates, habitat monitoring, and industry participants and experts.
4. **Develop metrics and targets** to measure working group successes.

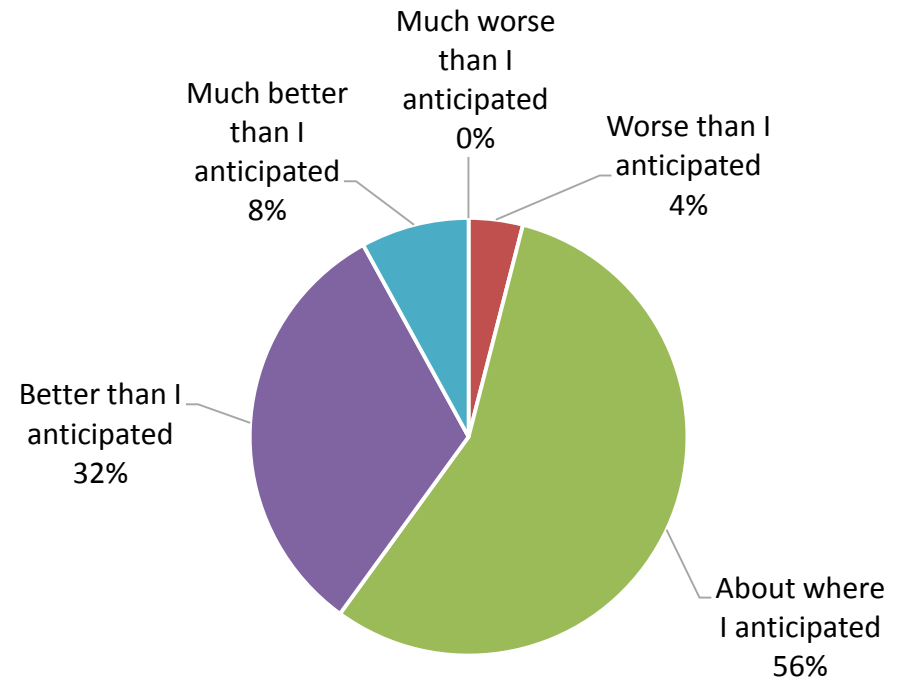


Key Feedback

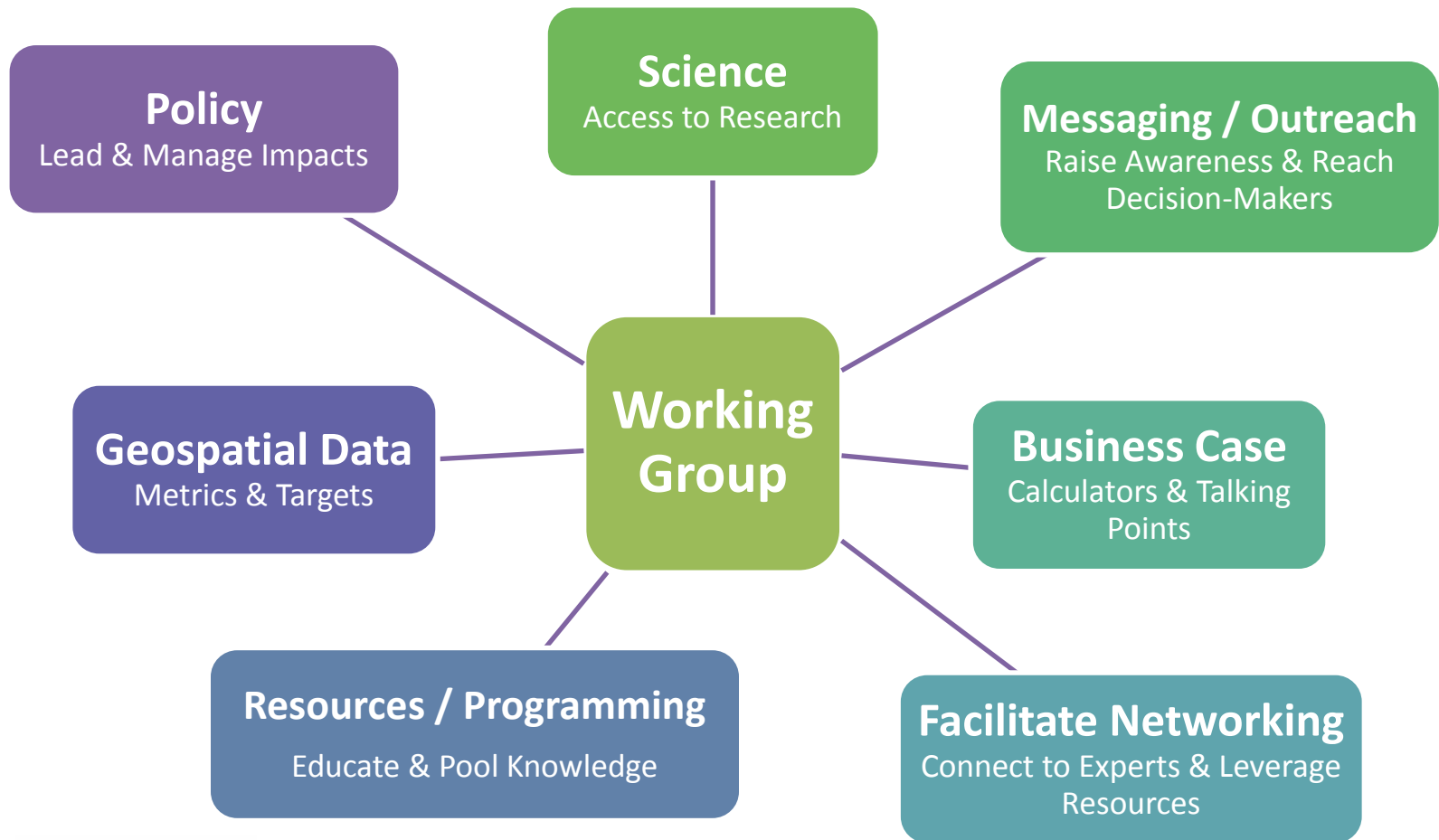
What were the most beneficial aspects of the meeting?



How is the working group progressing relative to your expectations?

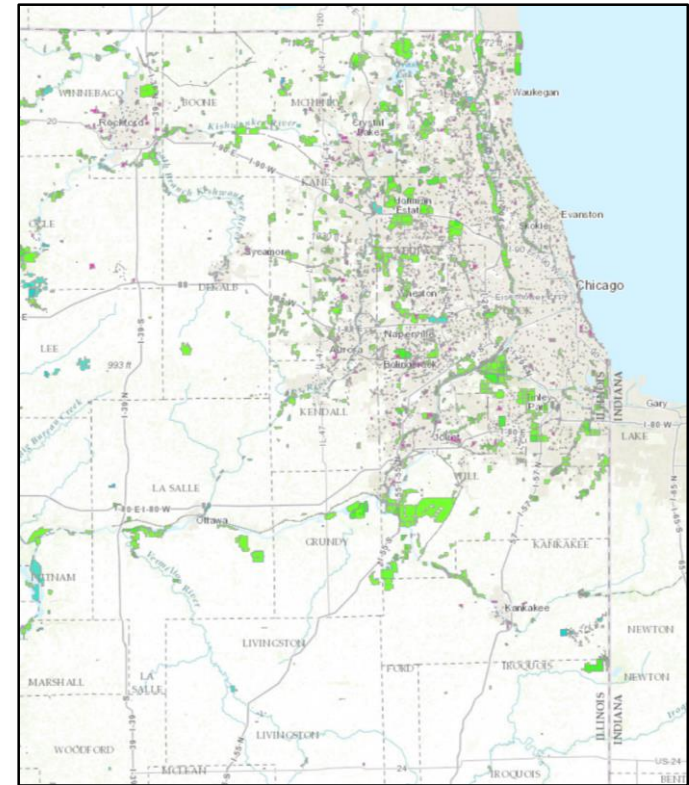


Key Feedback



Geospatial Habitat Database

- Clearinghouse for geospatial data on habitat managed by ROW organizations
 - Inventory habitat
 - Benchmark for tracking & planning
 - Elevate conservation value of ROWs
 - Promote new partnerships & collaborations



Source: I-View, Prairie State Conservation Coalition

Geospatial Habitat Database

Phase 1

- Initial population
- Existing habitat
- Simple data request
- Roll out to larger working group

Phase 2

- Connectivity analysis
- Potential habitat
- Additional detail / metrics

Working Group Resources Page

Rights-of-Way as Habitat Working Group

Engaging diverse stakeholders in a collaborative environment that



In the News Case Studies Planning Tools Best M

Case Studies

[Economic Impact of Ecosustainable Roadside Right-of-Way Practices](#)

This report prepared by the Florida Department of Transportation provides an estimate of the value of Florida's State Highway System ecosystem.

[Iowa Living Roadway Trust Ecotype Project](#)

This summary compiled by the University of Northern Iowa projects funded by the Iowa Department of Transportation activities are part of the Iowa Department of Transportation develop high quality native

diversity.

[Integrated Vegetation Management](#)

Rights-of-Way as Habitat Working Group

Engaging diverse stakeholders in a collaborative environment that



In the News Case Studies Planning Tools Best Management Practices

Planning Tools



[Monarch Habitat Development on Utility Corridors \(Northeast\)](#)

This manual written by the Pollinator Partnership provides background information, planting guidelines, evaluations, and checklists to assist utility managers in the Northeastern U.S.



[Monarch Habitat Development on Utility Corridors \(Northwest\)](#)

This manual written by the Pollinator Partnership provides background information, planting guidelines, evaluations, and checklists to assist utility managers in the Southeastern U.S.



[Monarch Habitat Development on Utility Corridors \(Southeastern\)](#)

This manual written by the Pollinator Partnership provides background information, planting guidelines, evaluations, and checklists to assist utility managers in the Southeastern U.S.

Rights-of-Way as Habitat Working Group

Engaging diverse stakeholders in a collaborative environment that promotes pollinator habitats and healthy ecosystems along rights-of-way by providing expertise, cost-effective best management practices, and industry-driven tools and resources.



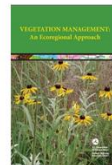
In the News Case Studies Planning Tools Best Management Practices Funding Opportunities Other Resources Discussion Board

Best Management Practices



[Roadside Best Management Practices that Benefit Pollinators](#)

These best management practices identify key steps that State Departments of Transportation can take to improve the quality of roadside habitat for pollinators including 1) adjusting roadside vegetation management techniques, 2) enhancing and restoring native roadside vegetation to include plant materials that improve pollinator habitat, and 3) incorporating native plants and pollinator habitat needs into roadside landscape design.




[Vegetation Management: An Ecoregional Approach](#)

Highway rights-of-way are the most visible of all public lands and likely the least understood. This manual is especially written for those decision-makers in maintenance, landscape, environmental services, and turf and erosion control to share what we know about managing this land.

Search

Working Group Resources Page

Available at: <http://rightofway.erc.uic.edu>

**Energy Resources Center**
RIGHTS-OF-WAY AS HABITAT WORKING GROUP

Username

Password

☐ Remember Me

Log In

Register | Lost your password?

[← Back to Rights-of-Way as Habitat Working Group](#)

Rights-of-Way as Habitat Working Group

Providing a forum to collaborate and share ideas, best practices, and other information to promote successful habitat projects along rights-of-way



The Rights-of-Way as Habitat Working Group's resources page. The page is intended to assist working group participants with habitat planning, and subsequent management and maintenance activities as well as communication and engagement. Pulling from a wide range of existing data, we have assembled key resources related to vegetation management, habitat and other best practices that help address some of the unique issues facing projects along rights-of-way.

Search

Contact

If you have information or resources to contribute to this page, please contact

Next Working Group Meeting

October 26 – 27, 2017

University of Illinois-Chicago

Day 1	Day 2
Creating the Business Case <ul style="list-style-type: none">• Cost studies• Quantifying environmental benefits• Cost metrics• Case studies	Sub-group Working Sessions

