



# Federal Pollinator Initiative Updates

Rights-of-Way as Habitat  
Working Group

Donita Cotter & Michael Gale  
U.S. Fish & Wildlife Service



*Antelope horns milkweed on the roadside in Texas.*

# OVERVIEW

- Update on Federal Actions
- USFWS Strategy & Rights-of-Way
- Funding Opportunities



# NATIONAL STRATEGY TO PROMOTE THE HEALTH OF HONEY BEES AND OTHER POLLINATORS



**The Washington Post**

Post Politics

## About President Obama's bee agenda...

By Juliet Eilperin April 6

As President Obama read Maurice Sendak's "Where the Wild Things Are" during the Easter Egg Roll, a single bee descended -- and with it

At first, the president tried to calm the screaming kid them. "They won't land on you. They won't sting you,

**The New York Times** | <http://nyti.ms/1c3GHQ8>

U.S.

## U.S. Details New Efforts to Support Ailing Bees

By **MICHAEL WINES** MAY 19, 2015

The White House on Tuesday outlined its strategy to restore the nation's struggling honeybee and monarch butterfly populations to some semblance of health, mostly by expanding the acreage devoted to the wildflowers and milkweed that are crucial to their survival.



# Federal Pollinator Strategy

- Report of the Pollinator Health Task Force

## GOALS

- Bees - Reduce winter colony losses: <15% within 10 yrs
- Monarch Butterflies - Eastern population of 225 million
- Habitat - Restore or enhance 7 million acres

# Rights-of-Ways Emphasis

- Increasing & Improving Pollinator Habitat
  - Section B: Expanding pollinator habitat on **rights-of-way** (pg. 32)
  - Easements on federal lands
  - Funding or Regulation
  - USDOT
    - FHWA BMPs, E-book, NERC / EEI
    - I-35 Pollinator Corridor

# Regulatory Assurances

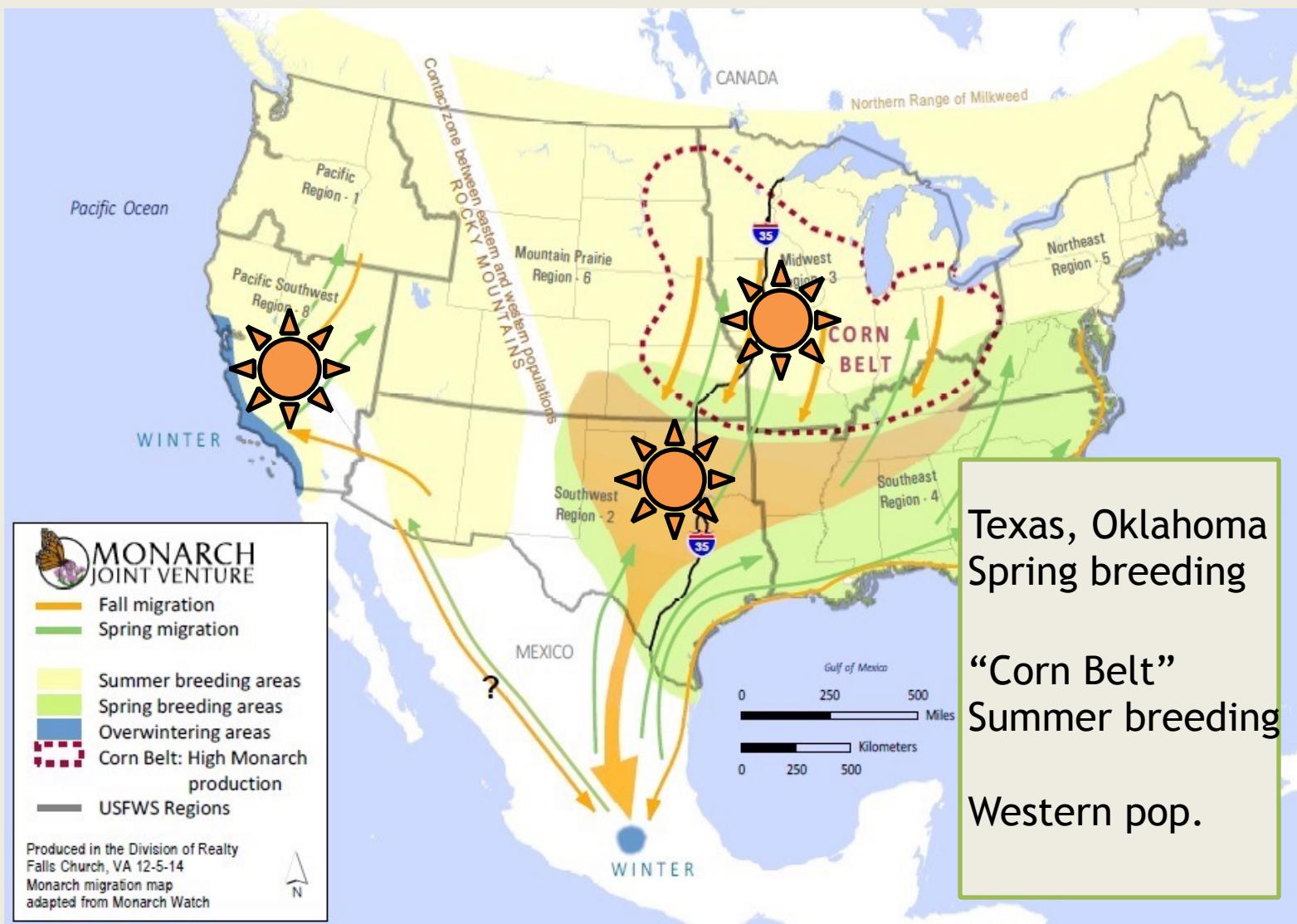
- Petitioned to list the Monarch butterfly as threatened under Endangered Species Act
- The Focus: work with partners to implement immediate, voluntary conservation actions
- Suite of predictability and assurance measures being considered

# Monarch Conservation Strategy





# PRIORITY GEOGRAPHIES





# LEADERSHIP



## Multiple Levels of Government, Multiple Scales of Civil Society

- Federal / National
- State / Regional
- Tribal
- Local / County / Chapter

## Multiple Sectors and Industries

- Agriculture
- Transportation
- Utilities
- Conservation Nonprofit Organizations



# HABITAT



## Protected Areas, Parks

*Members of Girl Scout Troop 5912 plant milkweed and nectar seedlings at San Diego Bay National Wildlife Refuge.*



## Private lands, Farmers

*Harvesting seed at Detroit Lakes National Wildlife Refuge. Partners for Fish & Wildlife biologist use the seed in work with private landowners.*



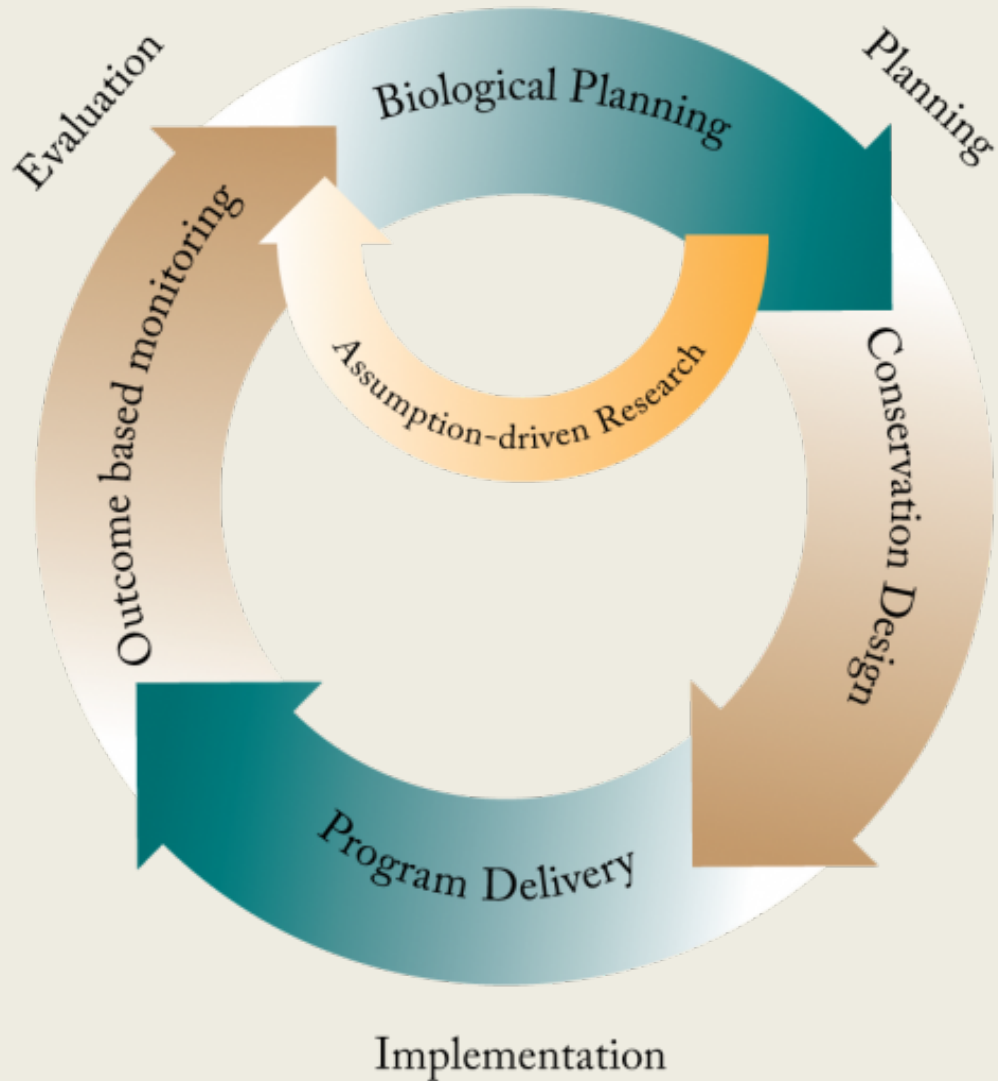
## Schoolyards, Backyards

*Local high school students and volunteers work on the East End Nature Garden in Houston.*



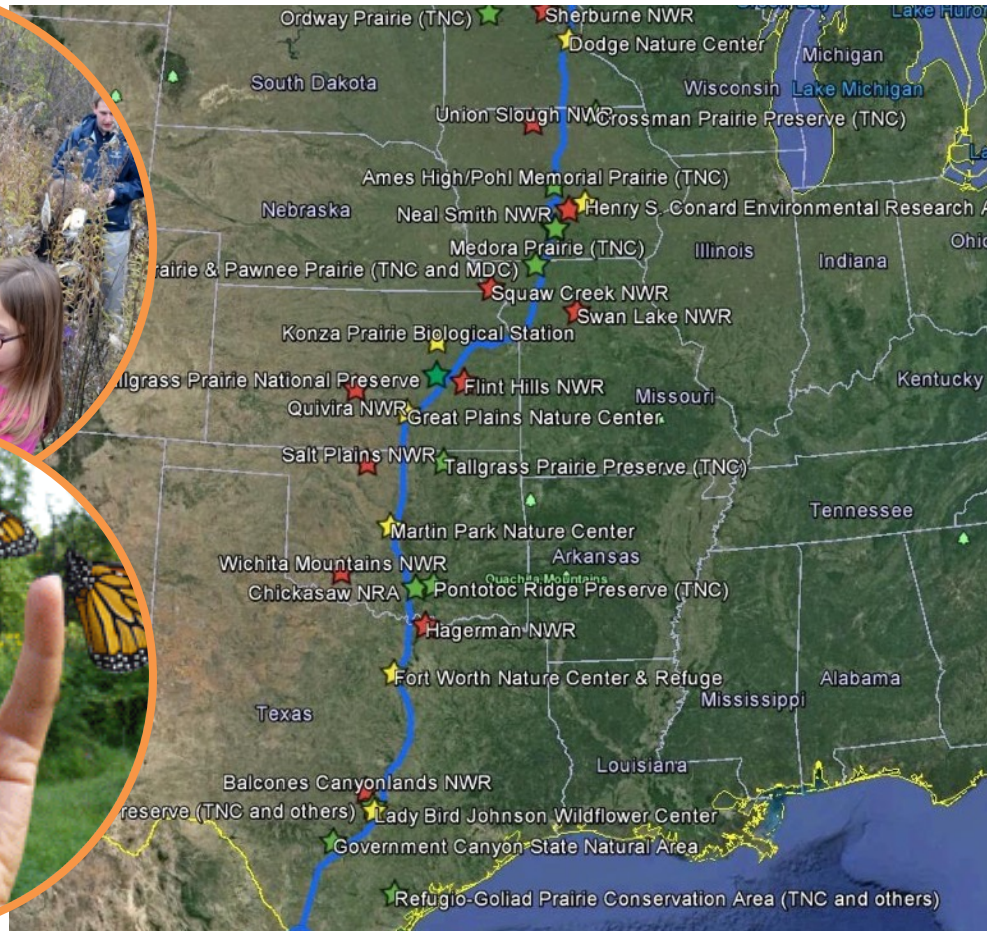
# SCIENCE

- Best available information
- Adaptive management at landscape scales





# PEOPLE



Interstate-35 - the “Monarch Highway”



**MONARCH  
JOINT VENTURE**  
*Conserving the monarch migration*



**THE  
XERCES  
SOCIETY**  
FOR  
INVERTEBRATE  
CONSERVATION

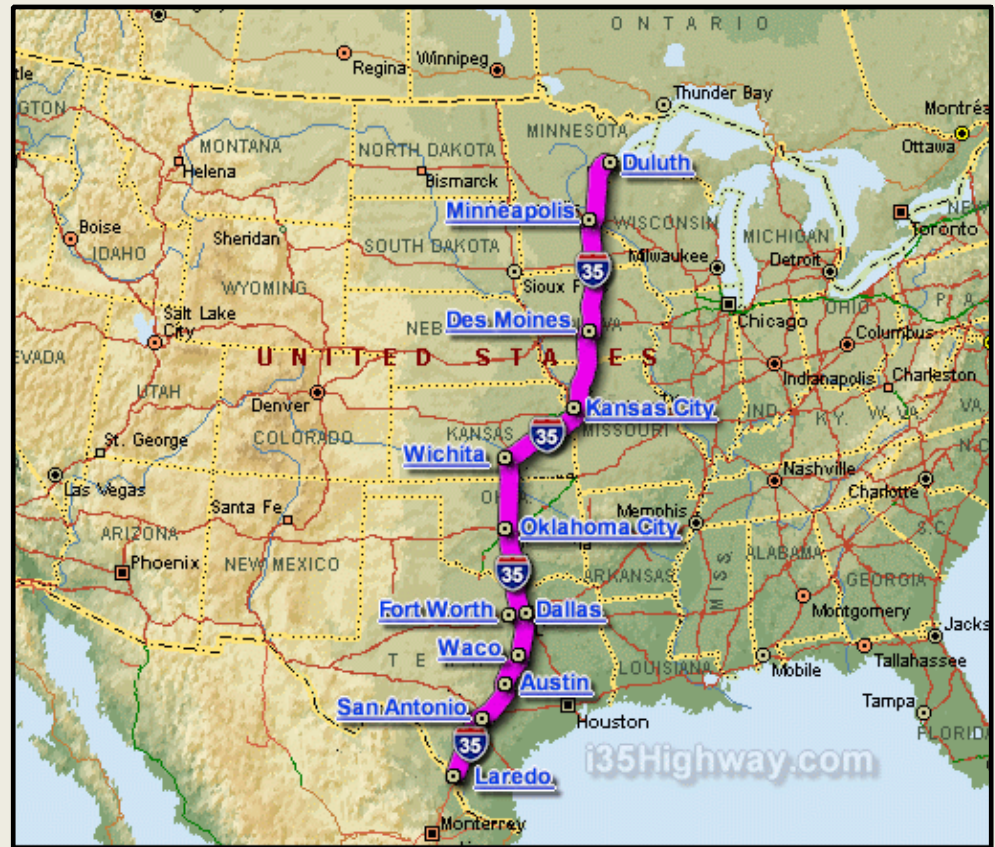
And many  
others!



# Monarch Highway

## Multi-stakeholder Partnership

- State DOTs, NWF, USFWS, USDOT, FHWA
- Roadside management, pollinator gardens at rest stops, other ideas.
- Summit in DC: November 17-18, 2015



Texas,  
Oklahoma,  
Kansas,  
Missouri,  
Iowa,  
Minnesota

# EXAMPLE - Western Monarch Butterfly Habitat Suitability Assessment and Model



Collaborative Project between the USFWS (Regions 1, 2, 6, and 8) and The Xerces Society for Invertebrate Conservation



# DRAFT Asclepias Relative Habitat Suitability

0 - 0.2

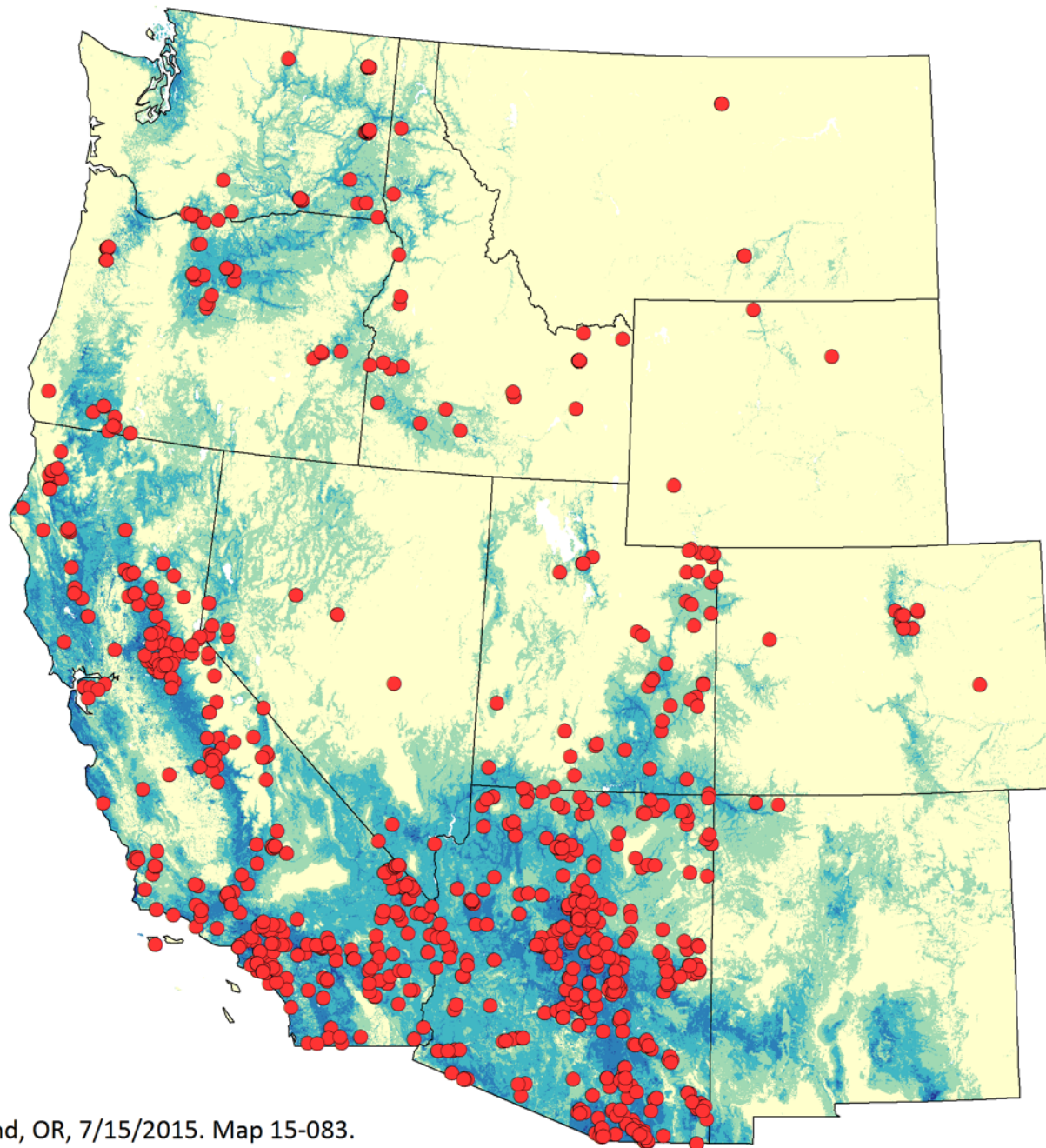
0.2 - 0.4

0.4 - 0.6

0.6 - 0.8

0.8 - 1

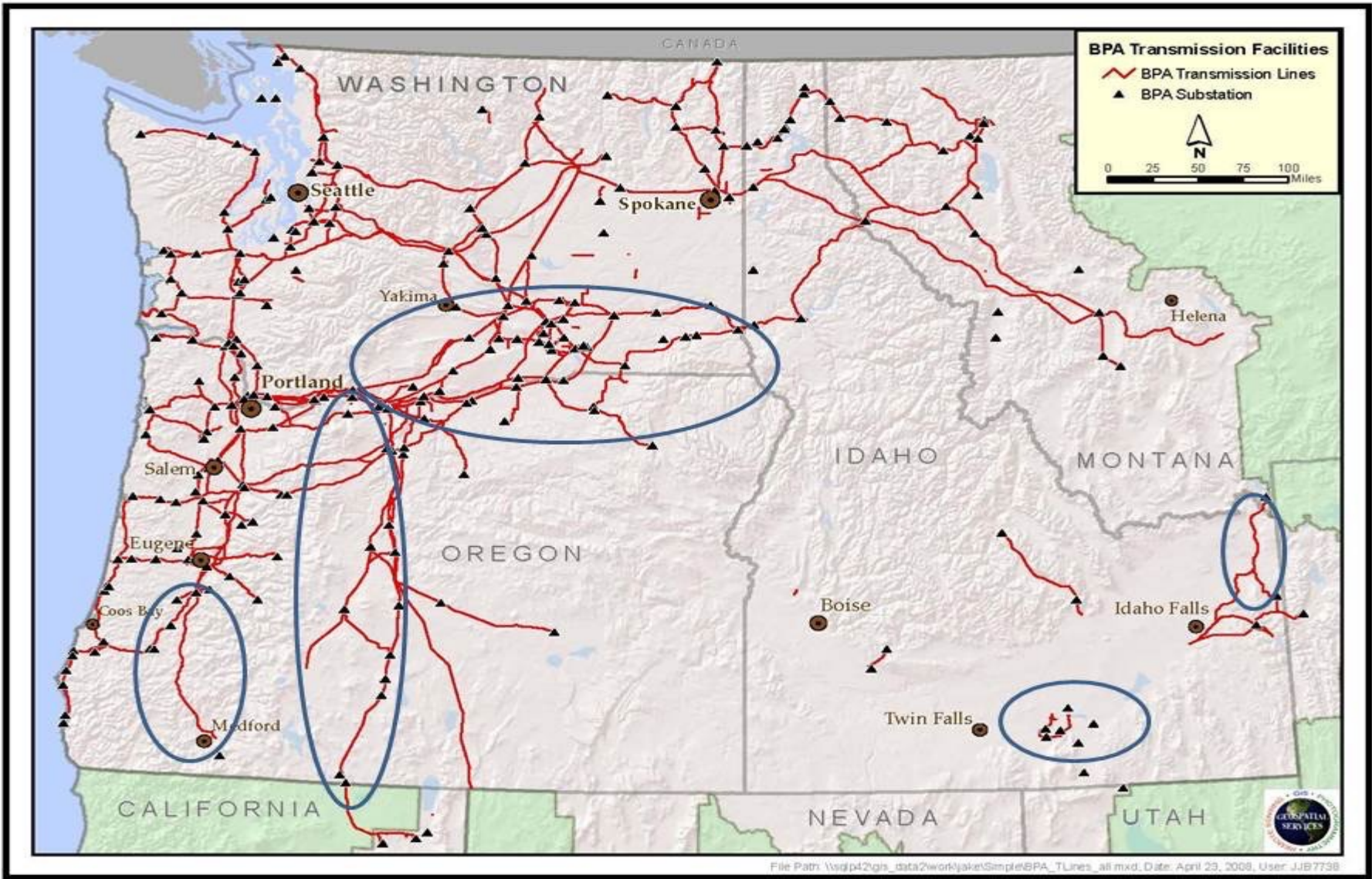
Asclepias records  
with 1 mile or better  
accuracy



0 100 200 400 Miles

Madeline Steele, USFWS R1 Office, Portland, OR, 7/15/2015. Map 15-083.

# Bonneville Power Administration (BPA) Pollinator Powerlines





# Funding Opportunities

## Monarch Butterfly Conservation Fund

- National Fish & Wildlife Foundation (NFWF)
- Raised ~\$8 million
- 1st Year - \$3.8 million
  - Habitat, Seed, & Capacity
- [nfwf.org/monarch](http://nfwf.org/monarch)





# Funding Opportunities

- Foundations
- Federal agencies
- State Wildlife Grants (States)
- Monarch Joint Venture (MJV) partners
- Community-based crowd-funding





# Thank you!

## Questions?

- ❖ Donita Cotter, Monarch Conservation Coordinator
  - [donita\\_cotter@fws.gov](mailto:donita_cotter@fws.gov)
  - [703.358.2383](tel:703.358.2383)
- ❖ Michael Gale, Special Assistant
  - [michael\\_gale@fws.gov](mailto:michael_gale@fws.gov)
  - [703.358.1840](tel:703.358.1840)