



CLEARION
SIMPLY TRANSFORMATIONAL

Software for Documentation and Communications

Pollinator Habitat Workshop

April 25, 2018

ABOUT CLEARION

- ➡ A Leader in Vegetation Work Management Software
- ➡ Founded in 2006
- ➡ Serving the Utility, DOT, Rail, & Telecom Markets
- ➡ Solutions for Asset Owners, Contractors, Applicators, Researchers

The Role of a Geo-Spatial System:

Connecting Maintenance Operations with Sustainability

- Recording Corridor Maintenance Activities -
- Habitat Mapping and Documentation -
- Communications Tools for Stakeholder Engagement -

SUPPORTING ASSET OWNERS' TRADITIONAL MISSIONS

- ⦿ **Safety**
- ⦿ **Reliability**
- ⦿ **Compliance**
- ⦿ **Efficiency**

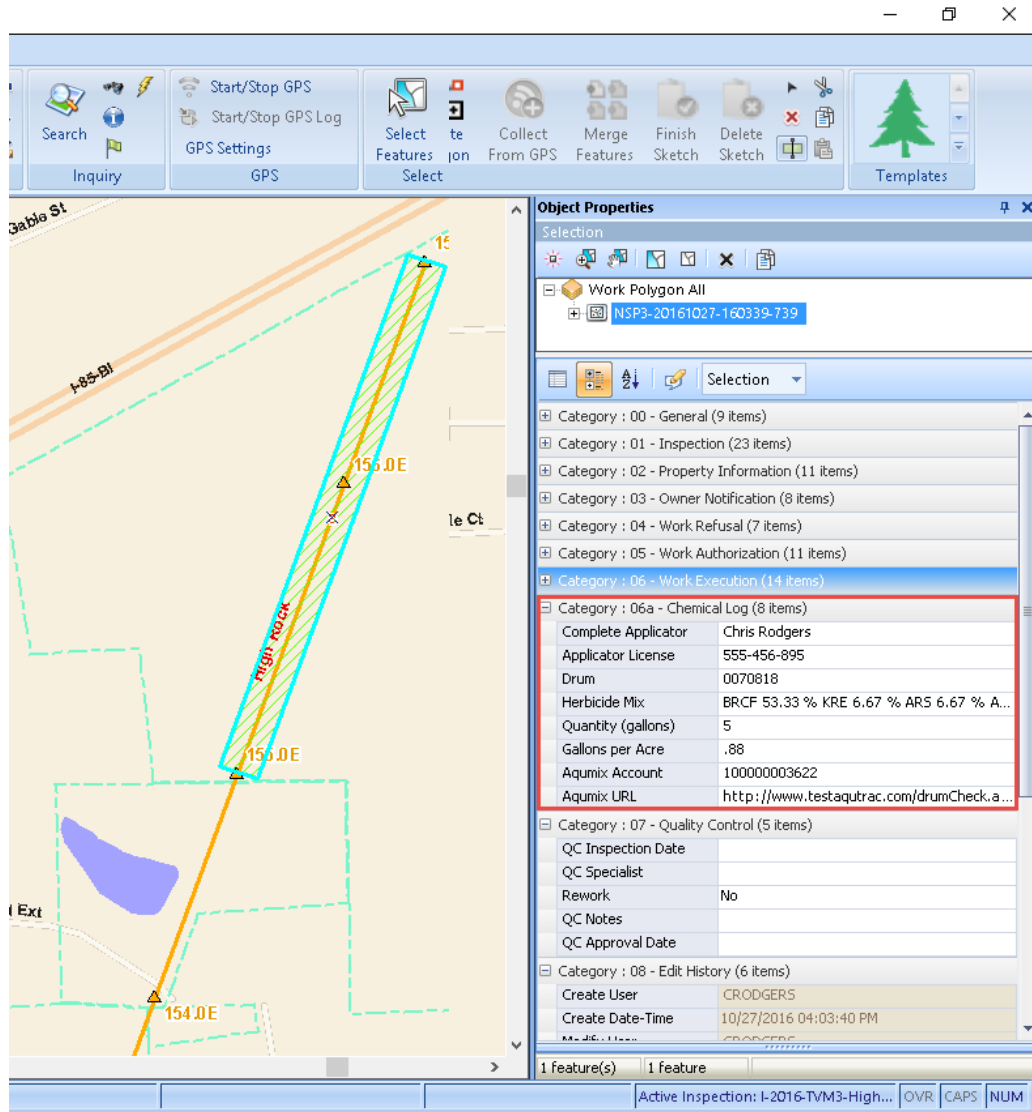




Leveraging the Software and Data to Support Sustainability Initiatives



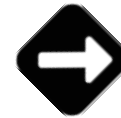
Begin by Documenting Maintenance Activities



Record Detailed Treatment Information over Time

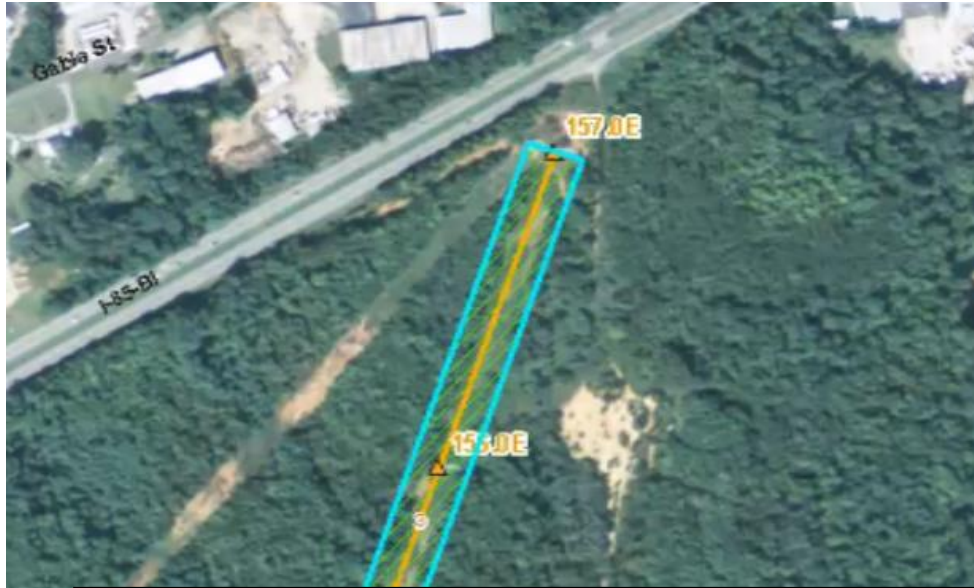


Build a Historical Database – Who, What, Where



Demonstrate Conformance to BMPs

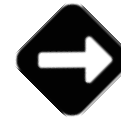
Begin by Documenting Maintenance Activities



Record Detailed Treatment Information over Time



Build a Historical Database – Who, What, Where



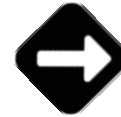
Demonstrate Conformance to BMPs

+ Category : 06 - Work Execution (14 items)	
- Category : 06a - Chemical Log (8 items)	
Complete Applicator	Chris Rodgers
Applicator License	555-456-895
Drum	0070818
Herbicide Mix	BRCF 53.33 % KRE 6.67 % ARS 6.67 % A...
Quantity (gallons)	5
Gallons per Acre	.88
Aqumix Account	1000000003622
Aqumix URL	http://www.testaquetrac.com/drumCheck.a...

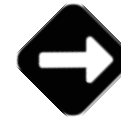
Develop Complementary Datasets



Habitat Mapping and Documentation



Habitat Development Plans



Habitat Maintenance Efforts



Wildlife
Conservation

Changing
Attitudes

Life
Safety

Pollution
Remediation

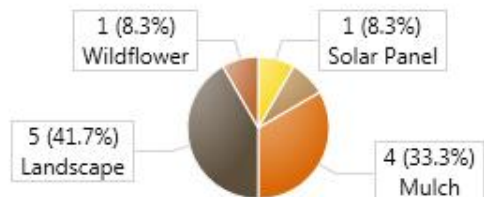
Resource
Efficiency



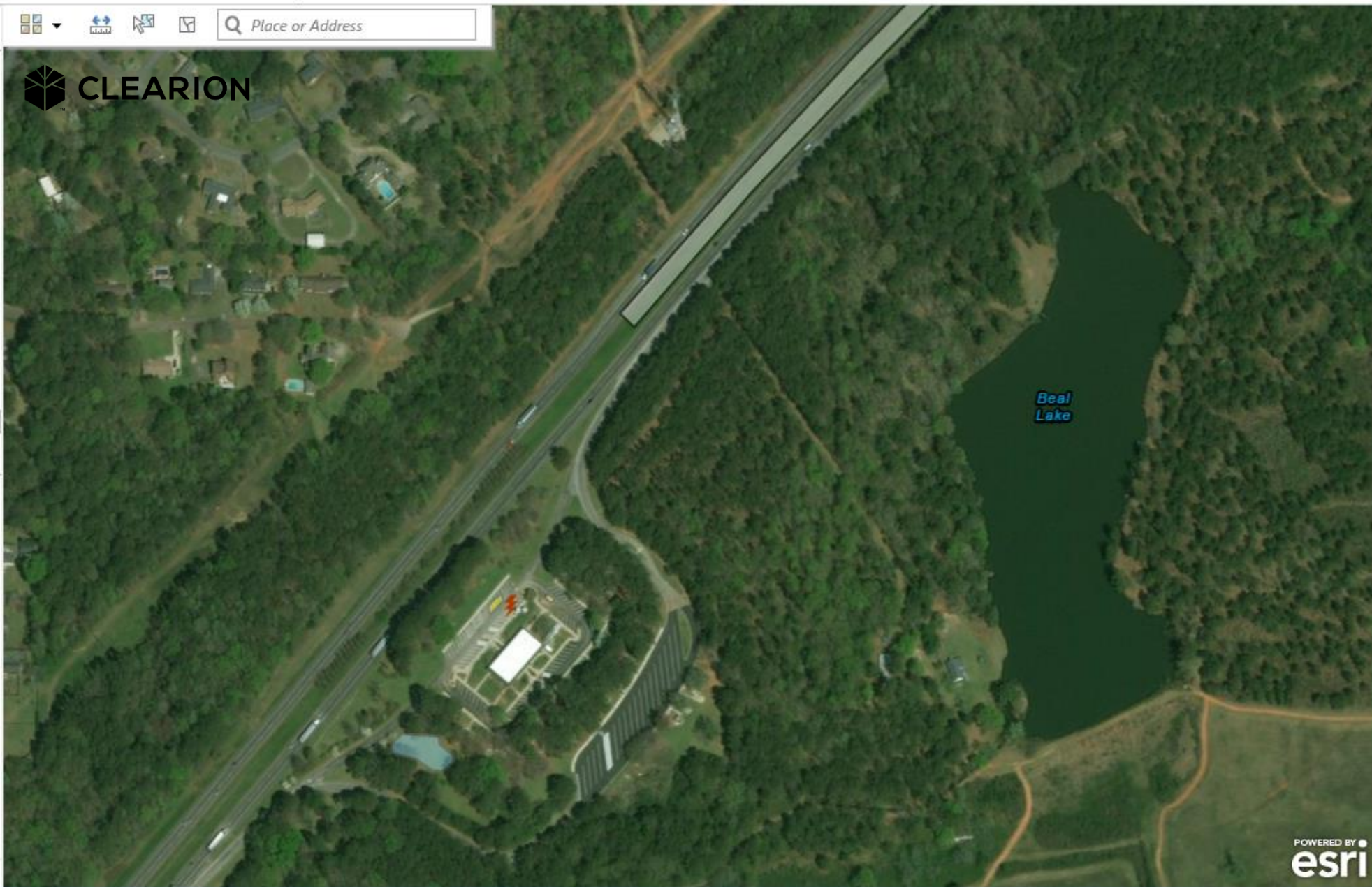
Enhancement Area Type



CLEARION



Enhancement Area Total

1,017,426 sqftPOWERED BY
esri

ZOOM - +



Legend

▲ The Ray - Enhancement Location

 Charging Station

▲ The Ray - Enhancement Area

 Landscape
 Mulch
 Pollinator
 Solar Panel
 Wildflower

▲ GDOT - Conditional or Restricted Area



▲ GDOT - Customer Note



▲ GDOT - Mile Markers



▲ WES - Spray Points

 Brush
 Backpack
 Concrete Spray
 Median
 Ramps
 Johnsongrass
 Kudzu
 Other

▲ WES - Spray

 Respray

CLEARION

Place or Address

Enhancement Area: Landscape

Enhancement Type 1 Landscape

Enhancement Type 2 Bioswale

Dominate Wildflower 1

Dominate Weed 1

Initial Herbicide Plot
PreparationInfo <http://theray.org/2017/03/27/c...>

Notes

Sq Feet 53,764



**Mapping Perennial Wheat
Plots on The Ray along GDOT
ROW.**

COMMUNICATE THROUGH STORY MAPS



Build Public-Facing Multi-Media Websites



Combine GIS Data, with Photos and Video



Include 3-D Maps for Enhanced Context



Target Messages to Different Stakeholders

In dam-free rivers, such as the Susitna in Alaska, adult salmon return to the exact location they spawned.

Photo: Matt Stoecker



The Elwha River Watershed

Hundreds of thousands of salmon swam in the Elwha's pristine waters until the early 20th century. Loggers harvesting the region's rich, old-growth forests eyed the Elwha—with its rushing waters and narrow canyon—as an ideal source of hydropower.

[Explore Map](#)

Fish return to the Elwha

SOCKEYE



CHINOOK



CHUM



Expected return:
18,000

STEELHEAD



COHO



PINK



Scientific studies predict salmon habitats and populations 25 years after removal of the dams. Roll over each fish to see estimates of restored habitat.

STORY MAPS

<http://storymaps.esri.com/stories/2015/river-reborn/index.html>

Thank you!

Chris Kelly, Co-Founder



CLEARION
SIMPLY TRANSFORMATIONAL

**Follow and Contact
Us**



(404) 954-0297
info@clearion.com
clearion.com