

The Art & Science of Partnering with Landowners

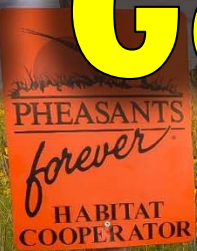
Pete Berthelsen

PF & QF Director of Habitat Partnerships

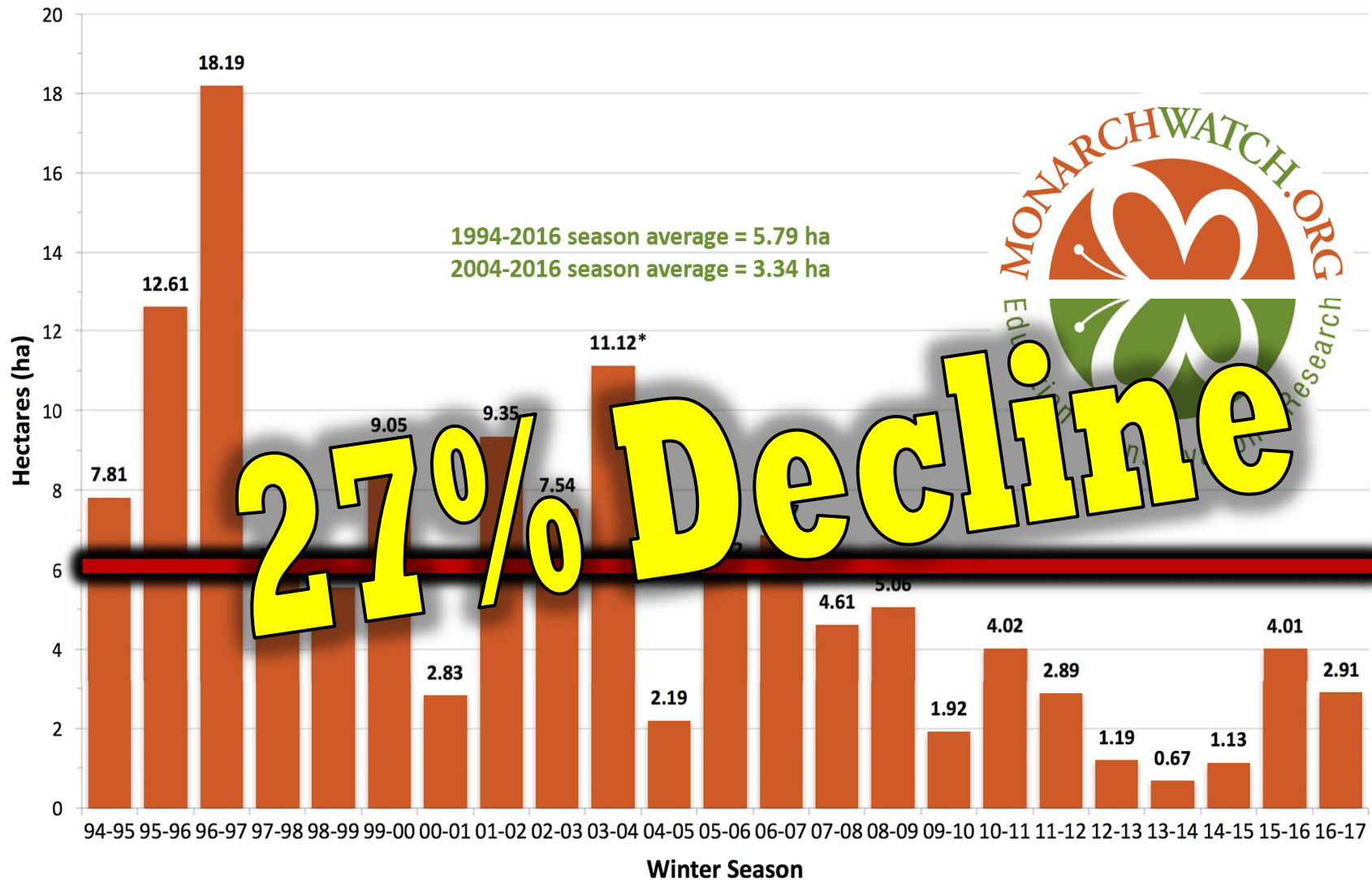




The Status Quo Won't Get It Done



Total Area Occupied by Monarch Colonies at Overwintering Sites in Mexico



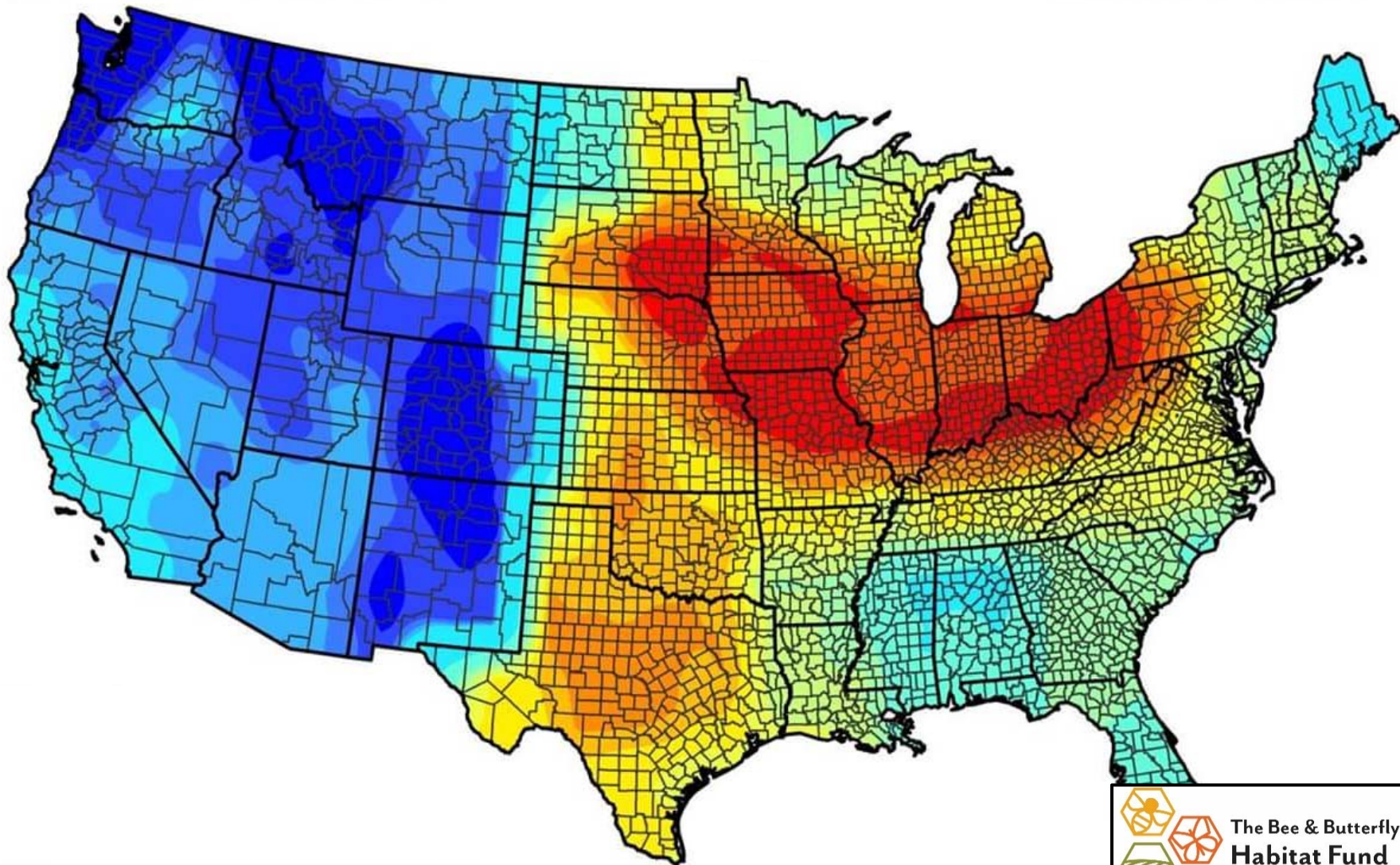
Data for 1994-2003 collected by personnel of the Monarch Butterfly Biosphere Reserve (MBBR) of the National Commission of Natural Protected Areas (CONANP) in Mexico. Data for 2003-2016 collected by World Wildlife Fund Mexico in coordination with the Directorate of the MBBR.

* Represents colony sizes measured in November of 2003 before the colonies consolidated. Measures obtained in January 2004 indicated the population was much smaller, possibly 8-9 hectares. CT

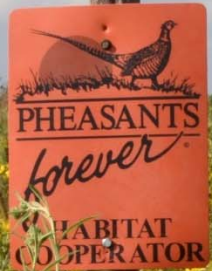


U.S. Fish & Wildlife Service

USFWS Monarch Butterfly National Conservation Priorities

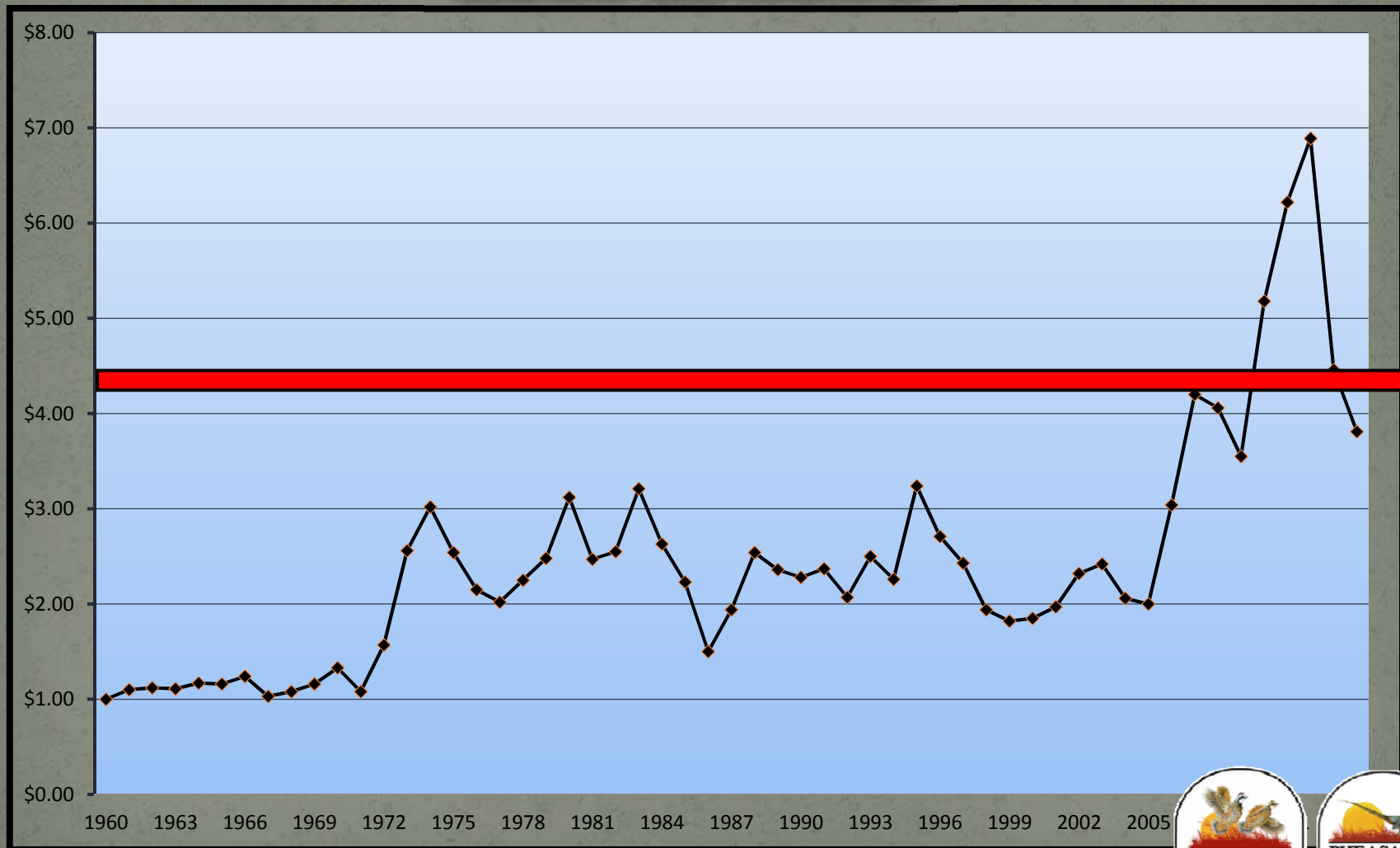


It All Starts with Habitat



National Corn Price

1960 to 2014



USDA, National Agricultural Statistics Service

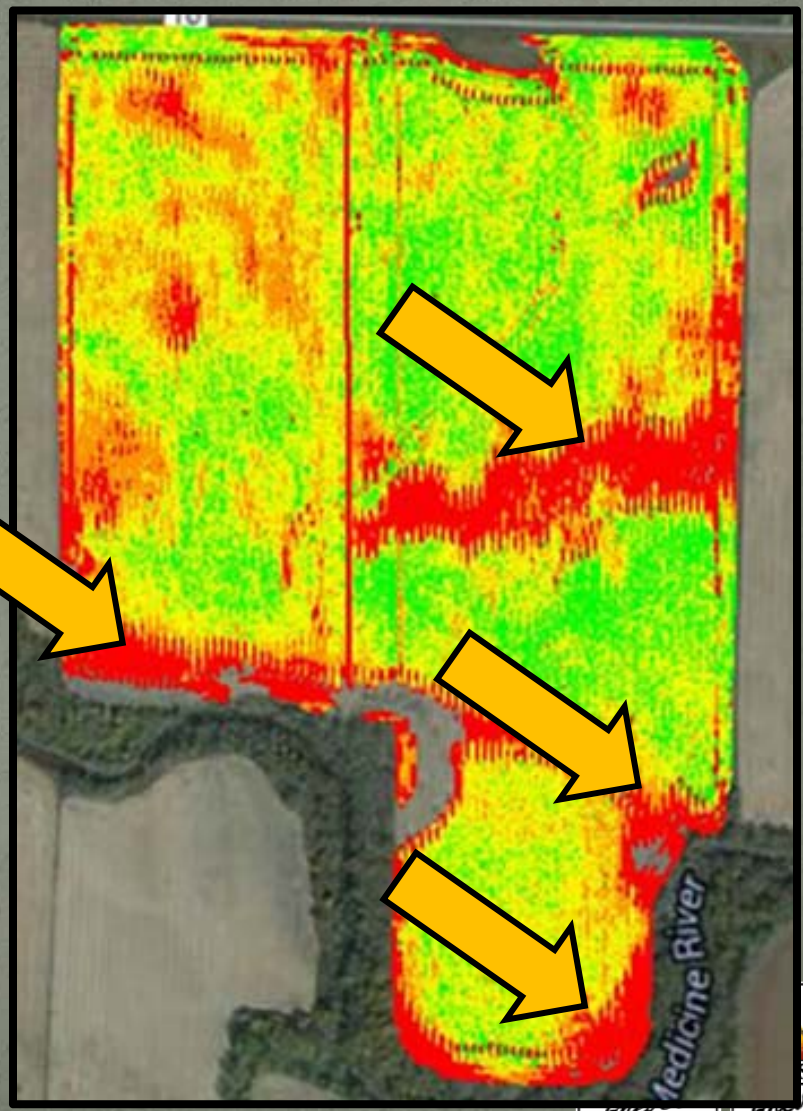




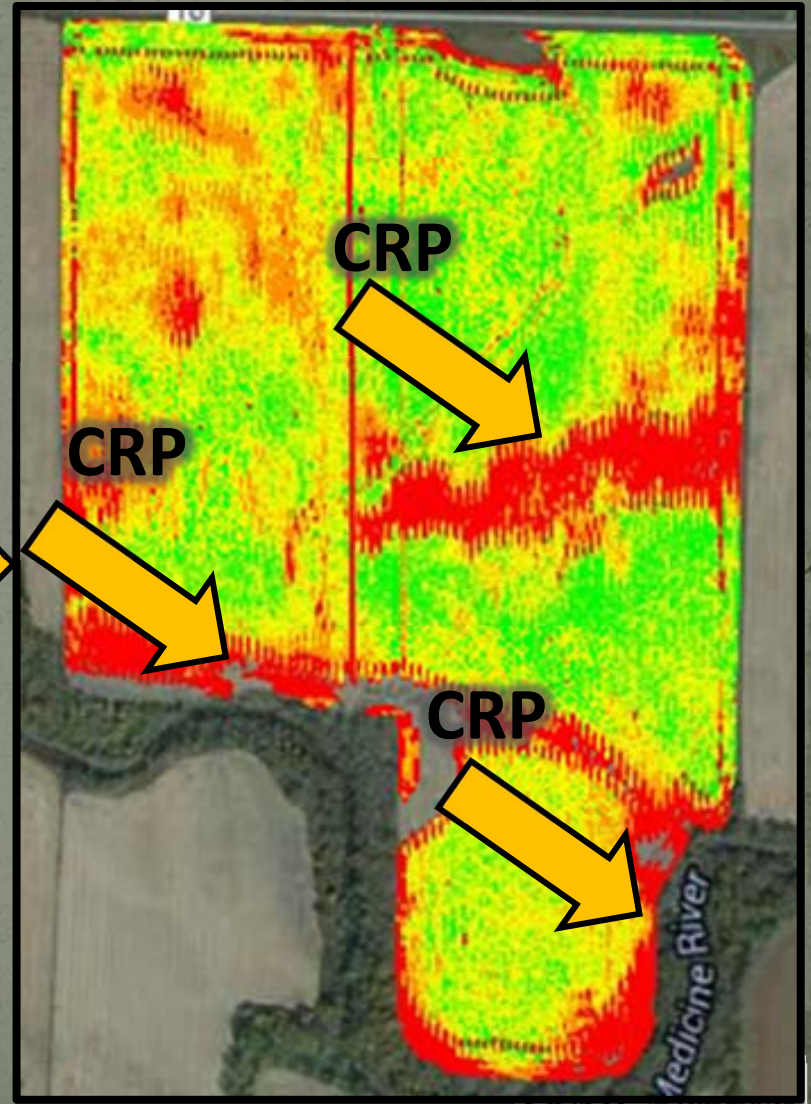
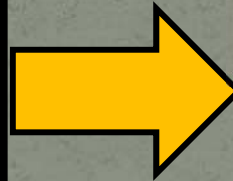
Real World Examples

Minnesota Corn Farmer

Parameter	Value
Acreage	181.00 acres
Field Average Yield	145.06 bu/ac
Profit	\$44.18/acre
ROI	6.49 %
Total Field Expenses	\$123,282.72
Total Field Revenue	\$131,279.30
Total Field Profit	\$7,996.58



Real World Examples



Real World Examples

Scenario: : Actual Production - 2013 CRP - 2013

Parameter	Value	Value
Acreage	181.00 acres	181.00 acres
Field Average Yield	145.06 bu/ac	157.66 bu/ac
Profit	\$44.18/acre	\$86.90/acre
ROI	6.49 %	14.01 %
Total Field Expenses	\$123,282.72	\$112,256.70
Total Field Revenue	\$131,279.30	\$127,985.72
Total Field Profit	\$7,996.58	\$15,729.02

+8.7%

+96.7%

+115.9%

- 8.9%

- 2.5%

+ 96.7%

A New Kind of Glue



Landowner Limitations

Access to Equipment

Knowledge of what to do

Ability to “Do” Habitat



Landowner Opportunity

The Moment in Time

Desire to “Do Something”

Desire to Be Part of Something

Passion and Enthusiasm

Point them in the Right Direction



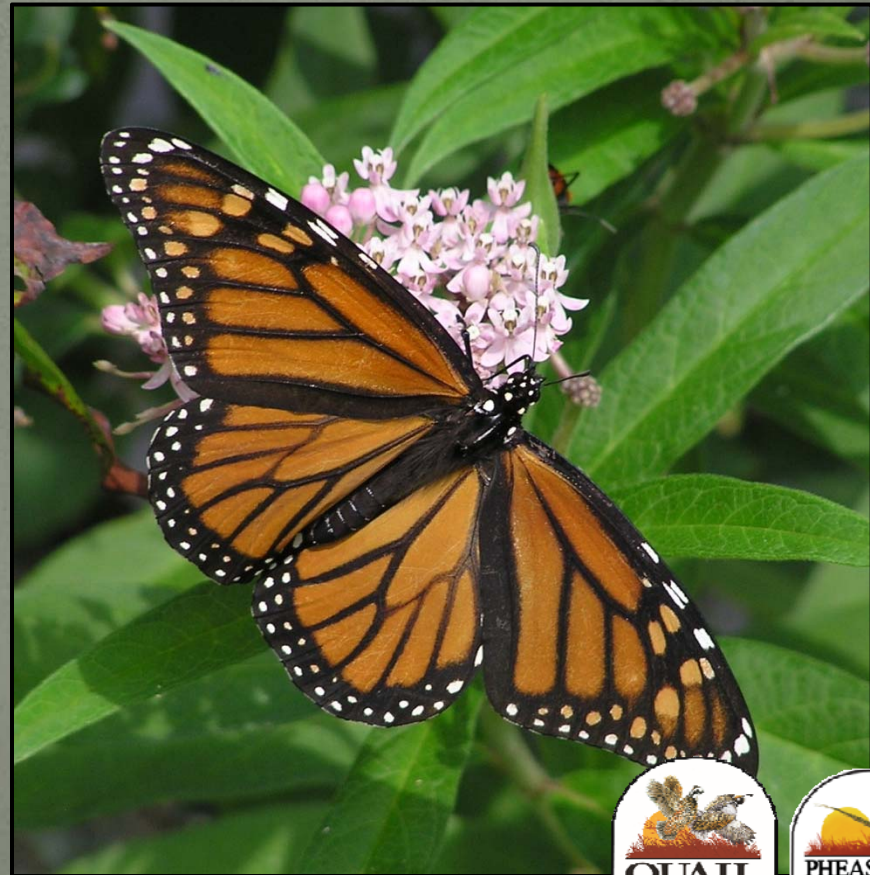
Habitat Standard

1. >50% of the mix is forbs.
2. >40 species in the mixture.
3. One or more milkweed species.
4. Flowering plants in each bloom period.
5. Use a seed calculator.



Monarch Butterfly Flower Associations

1. Tall Thistle
2. Whorled Milkweed
3. Ironweed
4. False Sunflower
5. Stiff Goldenrod
6. Red Clover
7. Wild Bergamot
8. Common White Clover
9. Dandelion
10. Vervain



The Power of Pollinators



AUGUST 19, 2013

Zakaria: The new al-Qaeda threat / Ted Cruz / Forohar: Yellen over Summers for Fed chief / Low Rolling in Vegas

TIME

A
WORLD
WITHOUT
BEEES



THE PRICE WE'LL
PAY IF WE DON'T
FIGURE OUT
WHAT'S KILLING
THE HONEYBEE

BY BRYAN WALSH

TIME.COM



CORNELL CHRONICLE

May 2, 2017

Science, Tech & Medicine

Arts & Humanities

Business, Law & Society

Campus Life

May 22, 2012

Insect pollinators contribute \$29 billion to U.S. farm income

By Krishna Ramanujan

Bees and other insects that pollinate plants in the United States have suffered in recent decades from mites, pesticides, pathogens, land development and habitat fragmentation. Nevertheless, production of insect-pollinated crops has mostly increased this century. Now, new research shows that insect pollinators' value to farmers may be hard to replace.

According to a Cornell study published in the May 22 issue of the journal *Public Library of Science ONE*, crops pollinated by



A truckload of honeybee colonies is delivered for lowbush blueberry pollination in Downeast, Maine.

Nicholas Calderone

21, USA





A New Kind of Glue

Monarch Butterfly Response

Honey Bees & Native Bees

Higher Quality Wildlife Habitat

Water Quality

Soil Health



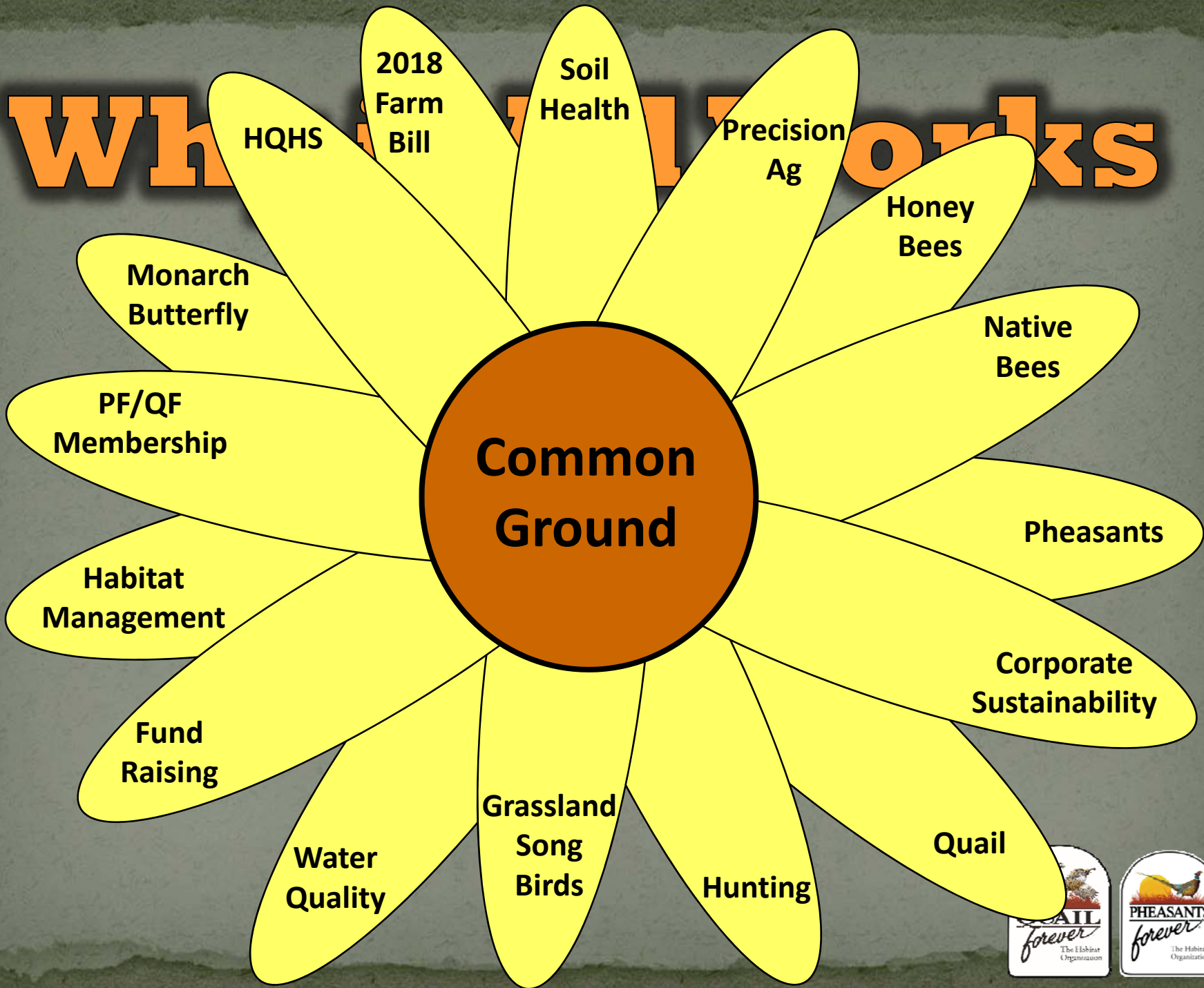
A New Kind of Glue







What Works





**There is far more
bringing us together
than there is that
separates us**



**There is far more
bringing us together
than there is that
separates us**



What Can You Do?





HALVERSON SCHOOL
 Albert Lea, Minnesota
 1970 - 1971

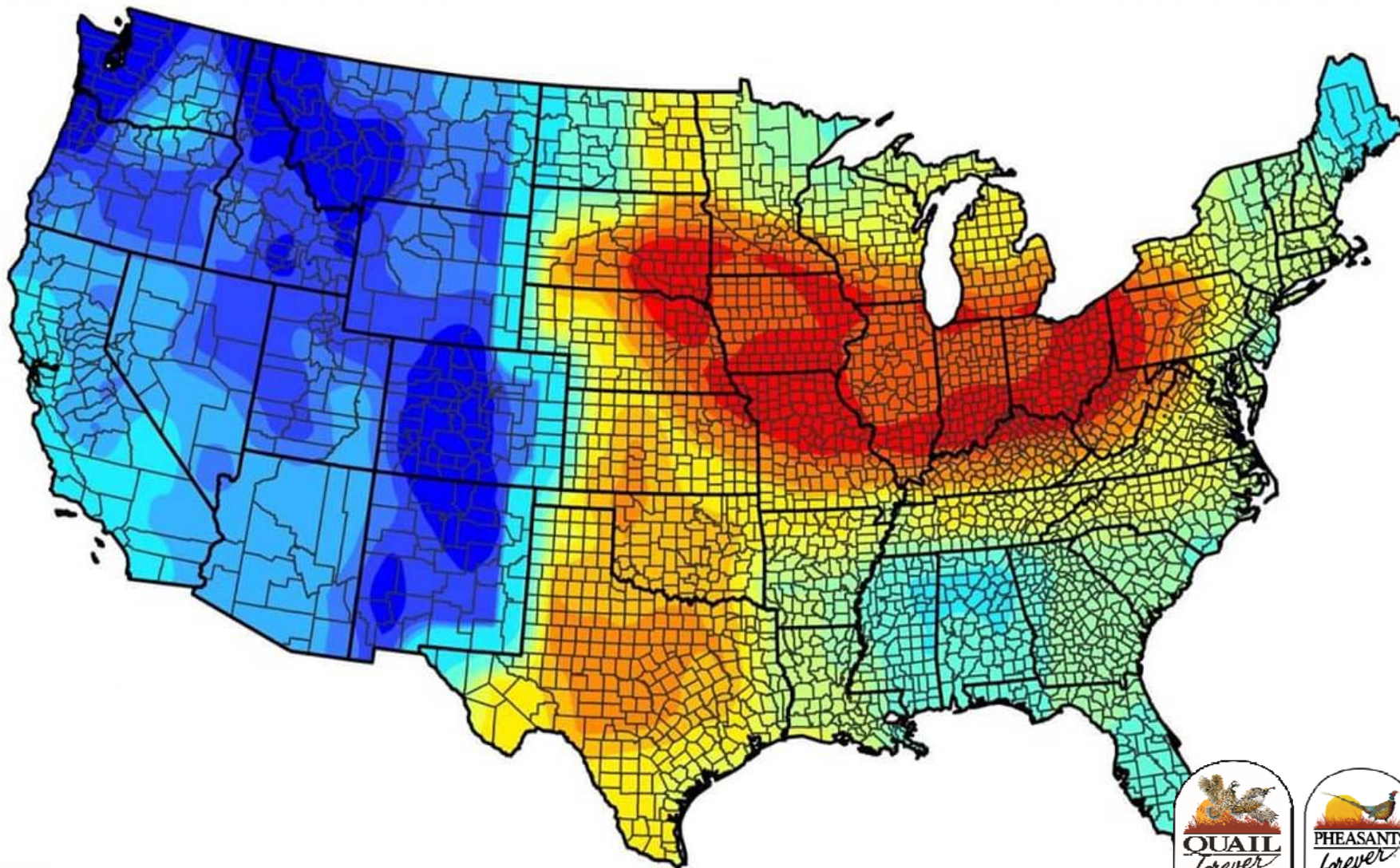
Grade 3 *JR* Abbe





U.S. Fish & Wildlife Service

USFWS Monarch Butterfly National Conservation Priorities

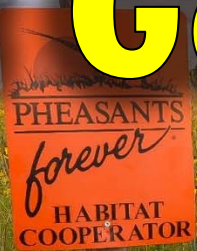


Final Thought

**We Have a
Moment in Time**



The Status Quo Won't Get It Done



The Need To Make Every Acre The Best It Can Be



Nebraska Pheasants Forever & Quail Forever

Continuing the mission through

Habitat Tip Videos



Subscribe!



[YouTube.com/user/PFNebraska](https://www.youtube.com/user/PFNebraska)

*Weekly Habitat Tips
Special Events Videos
And More!*

For more information visit
www.NebraskaPF.com



Questions?

Peter Berthelsen

Director of Habitat Partnerships

Pheasants Forever, Inc.

1011 Alexander Avenue

Elba, NE 68835

308-390-0848

pberthelsen@pheasantsforever.org



