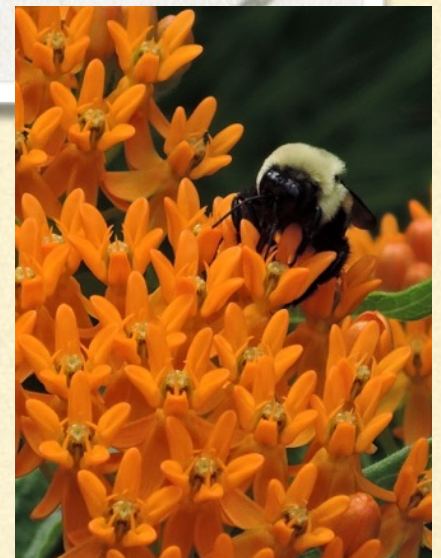




# MOW - SPRAY GENERATION

A Sunday Afternoon Drive Story





# ROW CORRIDORS

## OFTEN SHARED WITH HIGHWAYS



- Fiber Optic lines
  - Cable lines
  - Sewer & water lines
  - Electrical lines
  - Phone lines
  - Oil & Gas Pipelines
  - Rail lines
- Environmental Concerns in Rights of Way Management Conference, 1996. “Using Native Plants as Problem Solvers”





# CONSTRAINTS, OBSTACLES & BMPS

to enhance pollinator habitat on Right-of-Way,

highway ROWS equal 17,000,000 acres of opportunity



# OBSTACLES

- WILDFLOWERS AS “A BUNCH OF WEEDS”
  - NO RULES/STANDARDS
  - CHANGE= REGS AND/OR \$\$\$
- 

**1987 STURRA**

REAUTHORIZATION ACT:

WILDFLOWER REQUIREMENT





# CONSTRAINTS

- ADVERSE TO CHANGE
- INFORMATION SHARING
- LACK OF KNOWLEDGE
- NPDES - QUICK COVER
- “FRONT LAWN OF AMERICA”



**Highway Mix #5**



# BEST MANAGEMENT PRACTICES



Prescribed Burns



Biocontrols



Grazing



Planting Natives



Equipment cleaning



# POLLINATORS PREFER GRASSLAND HABITAT



**SO DO HIGHWAYS !**





Florida



California



Minnesota

**PROTECT NATIVE PLANT REMNANTS**





**NATIVE PLANTINGS SINCE THE 1970'S**



# SPOT SPRAYING (not BROADCAST)

- TECHNICAL
- BACK-PACK
- ATV SPRAYERS
- HORSE-BACK





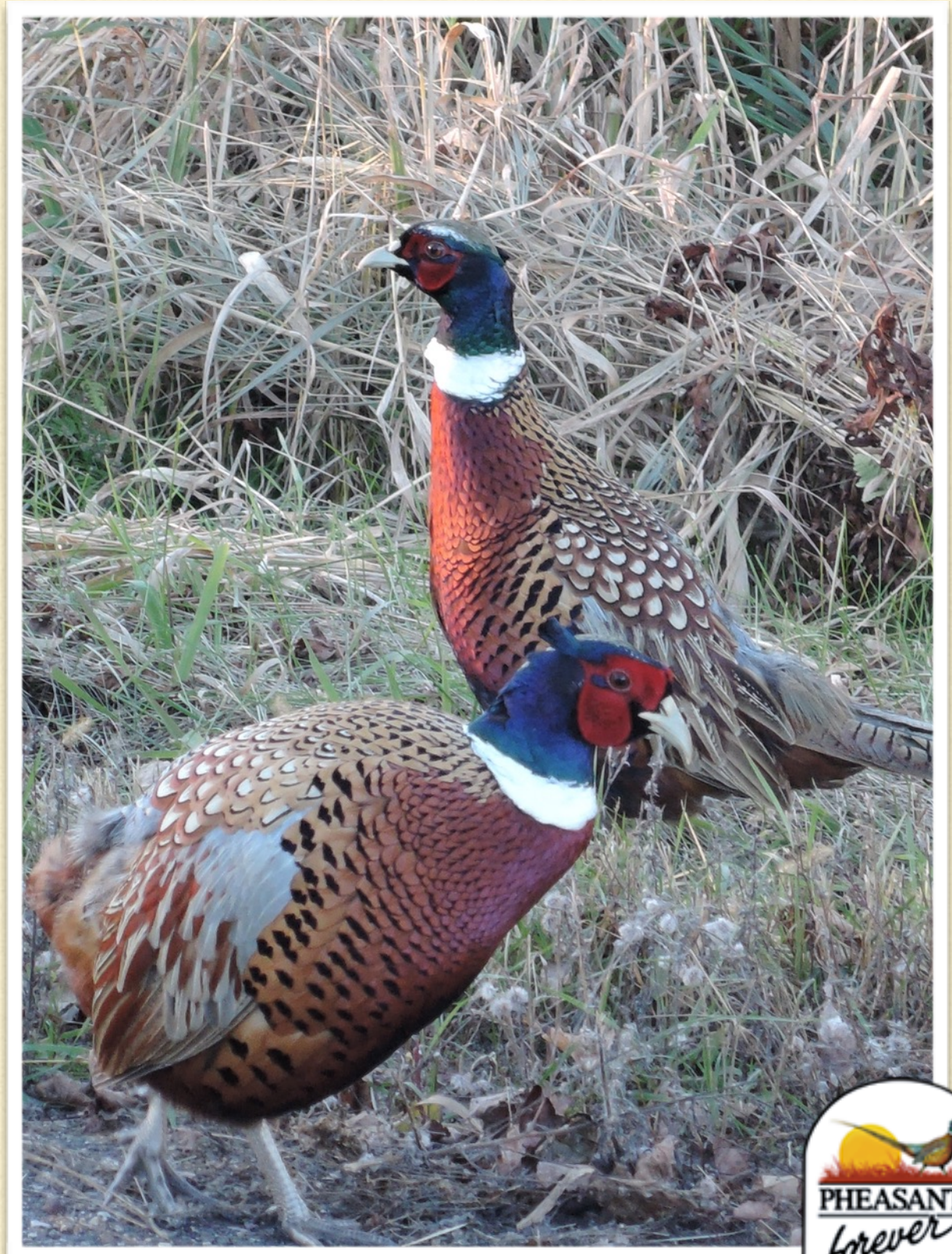
# REDUCED MOWING

1985  
MINNESOTA  
PRECEDENT:

1. ONE SWATH ONLY
2. RURAL ROADSIDES
3. ALL ROW - AUGUST

---

= NO COST HABITAT



Pheasants Forever





# POLLINATOR/ HIGHWAY HISTORY

- PRAIRIE PASSAGE - 1993
- IOWA RESEARCH - 2001
- U.S. POSTAL OFFICE - 2006
- NAPPC/FHWA MOU - 2008
- MONARCH HIGHWAY -2015







# STATES MET WITH MRS. JOHNSON

In 1987, she asked what were our obstacles to planting native wildflowers.

---



# CHANGE ONLY HAPPENS WITH NEW Authority and Funding

**SAFTEA LU:  
6006.439 (2005)**

NEW ELIGIBILITY FOR  
FEDERAL-AID FUNDS:

- 1. NOXIOUS WEED  
CONTROL**
- 2. NATIVE PLANT  
ESTABLISHMENT**







2014



“Tres Amigos” Summit

## Pollinator Health Task Force - 2015

- Reduce honeybee colony losses
- Protect **monarch** populations
- Restore 7,000,000 acres

President's Memorandum:  
A White House Task Force  
including USDOT

Led to 2016 FHWA/USDOT  
Pollinator support & FAST  
[@environment.fhwa.dot.gov](mailto:@environment.fhwa.dot.gov)

Contact: Deidre Remley  
202-366-0524



# **The FAST ACT: 2015**

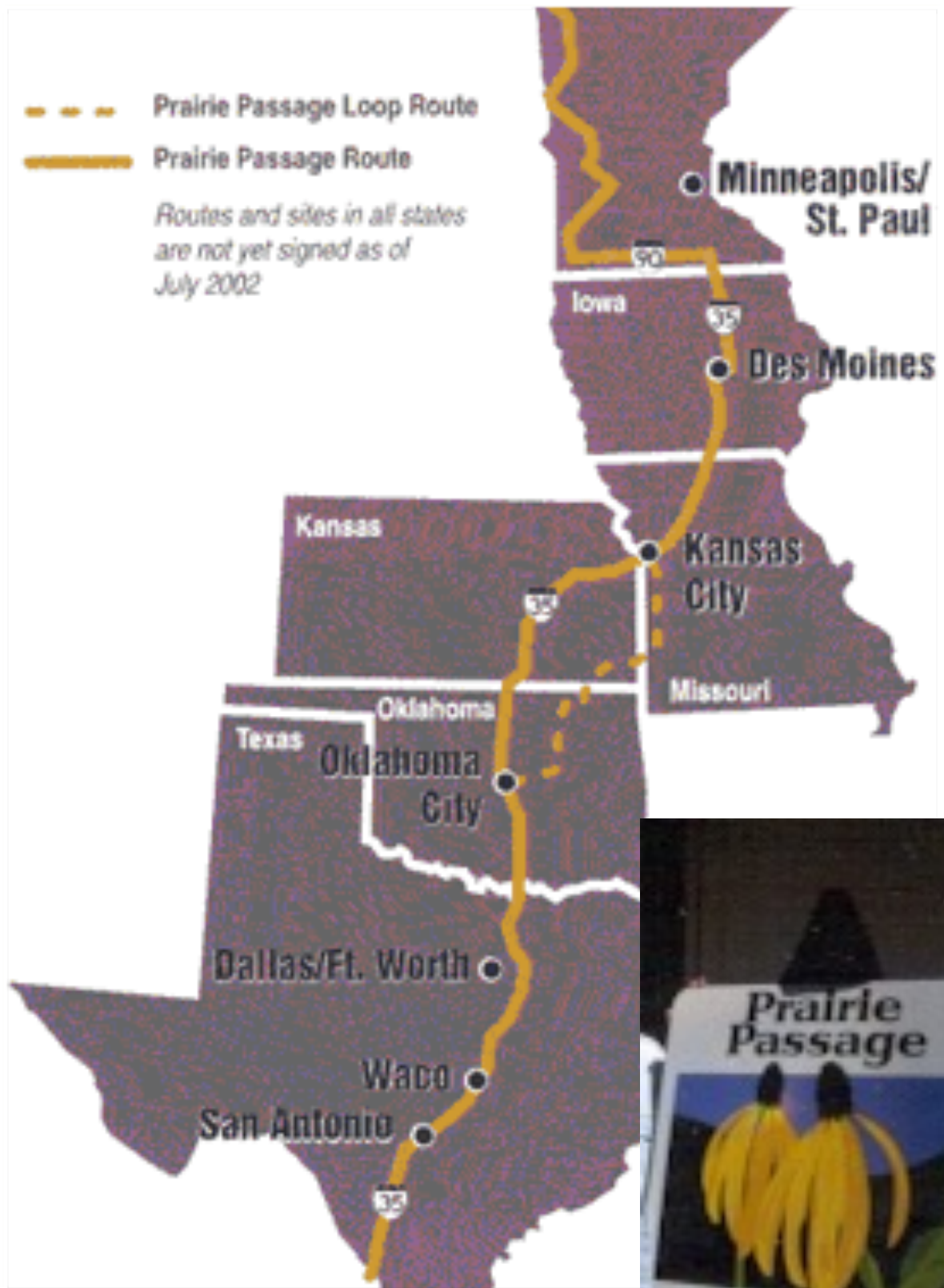
**PROVISIONS TO  
ENCOURAGE  
POLLINATOR  
HABITAT AND  
FORAGE ON  
TRANSPORTATION  
RIGHTS-OF-WAY  
INCLUDES:**

- A) INTEGRATED VEG. MGT.**
- B) REDUCED MOWING**
- C) NATIVE PLANTINGS**





# THE MONARCH HIGHWAY



**1993 Prairie Passage established**





ME, DE, MD, WA, TX, CA, WY, SD, UT, OR, MA

# OTHER STATE DOT'S EFFORTS



WisDOT **reduced mowing**  
partnered with 22 groups.

- **FLORIDA:** investigating **reduced mowing** and butterfly collisions
- **IDAHO:** planting native habitats.
- **IOWA:** leading Midwest planting efforts with aid of Monarch Watch milkweeds.
- **MAINE:** **reducing mowing** and native planting.
- **MINNESOTA:** 5000a. in 10 years and added 4 milkweed sp. to highway mixes. (**reduced mow**)
- **MISSOURI:** a pollinator garden at St. Louis Zoo
- **OHIO:** expanding pollinator research plantings
- **ILLINOIS:** since 1992 inventoried remnants to protect
- **INDIANA:** **Reduced mowing**-spraying plus native plantings with their own 3 seed farms.



FROM East, West, North, South  
**INVASIVES**



**WILDFIRES**



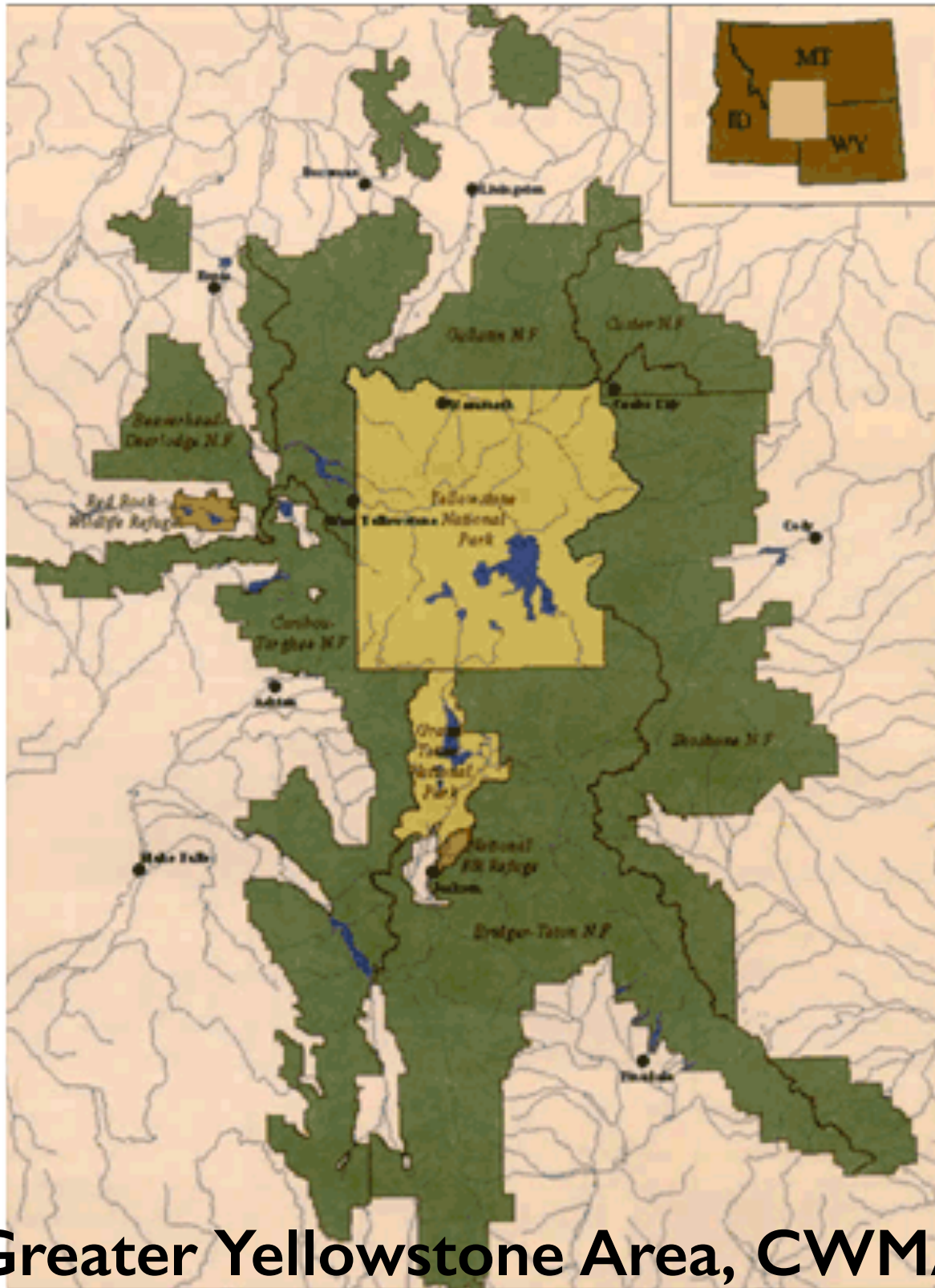
**STORMS**



**DROUGHT**

**VEGETATION UNDER PRESSURE**





Greater Yellowstone Area, CWMA



Fond du Lac Tribe/MnDOT



Malheur County, Oregon

## FINDING PARTNERSHIPS



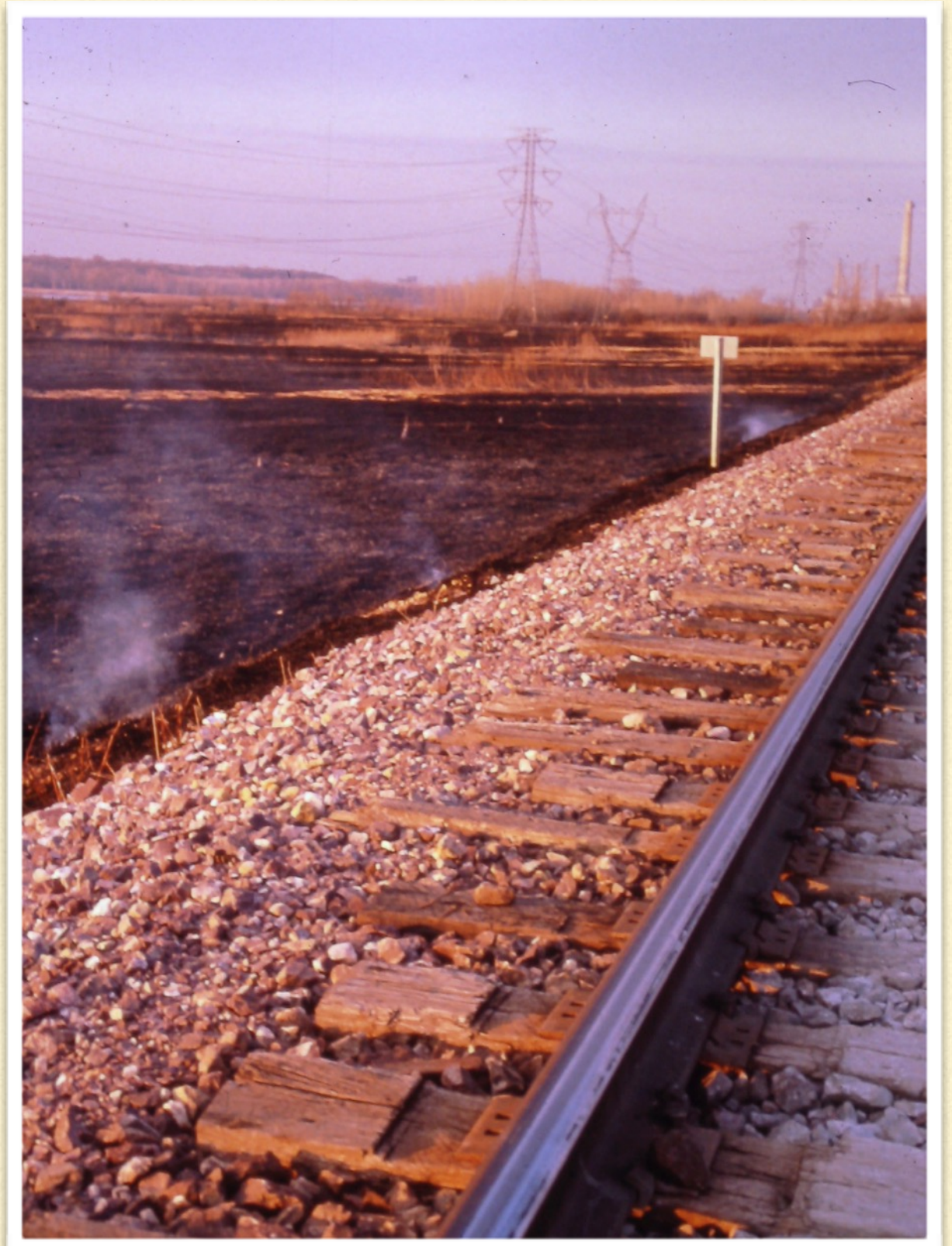
## ROW PARTNERSHIPS TOO

NOT ENOUGH FUNDING

PUBLIC SUPPORT EXISTS

POLLINATORS NEED US

The economy is a wholly  
owned subsidiary of the  
environment, not the  
other way around. Nelson, 2002





# CHANGE HAPPENED

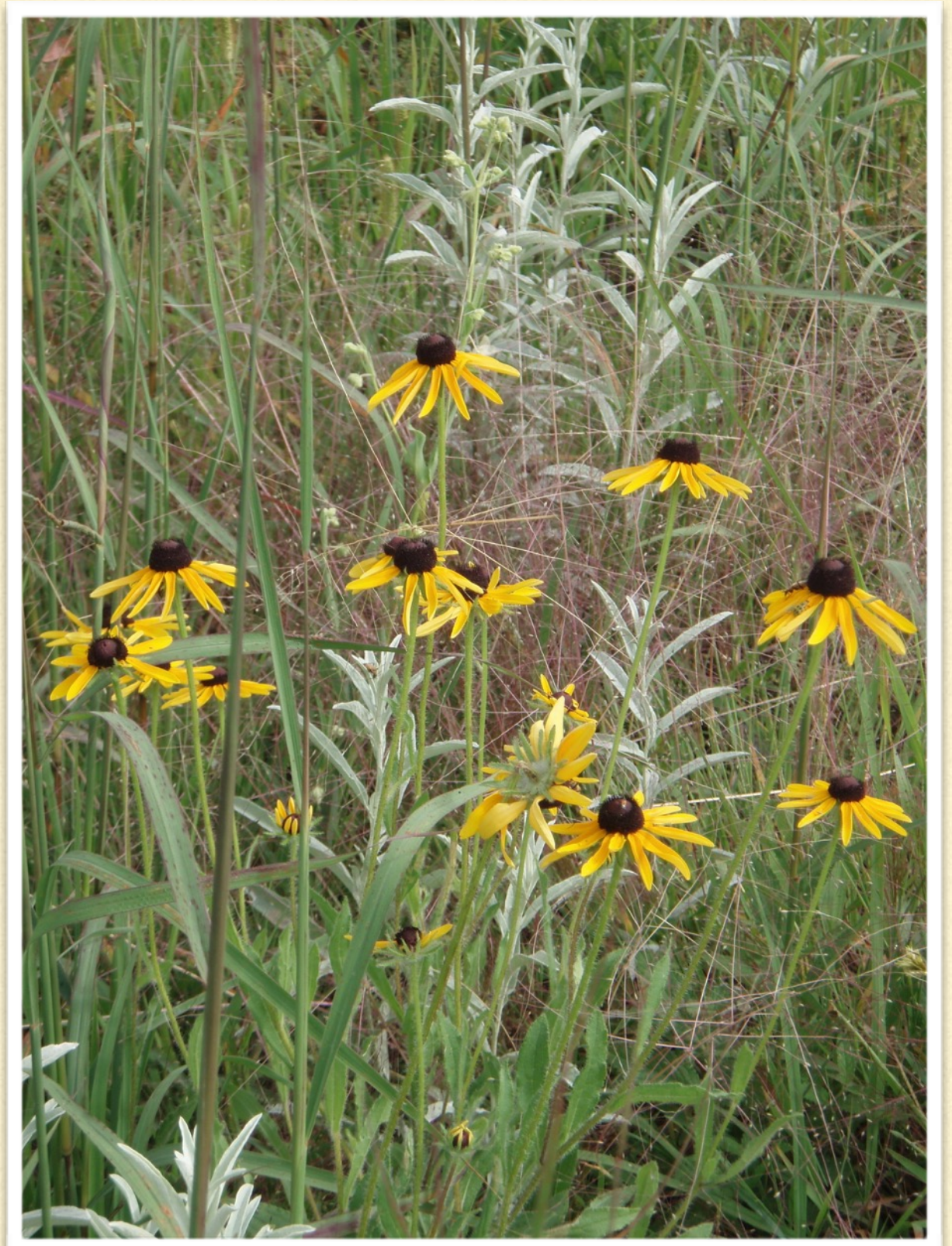
NOT JUST “A BUNCH OF WEEDS” ANYMORE  
A DIVERSITY OF FLOWERS AND GRASSES THAT

- PROVIDE HABITAT
- NATURAL BEAUTY
- EROSION CONTROL
- WATER RETENTION
- REGIONAL IDENTITY

THANKS TO A 2014 MEETING IN MEXICO  
PLUS EFFORTS OF MANY PARTNERS:  
(NAPPC, WILDLIFE FEDERATION, USFWS +++)

## FHWA/USDOT

1. AUTHORITY/SUPPORT INCREASED
2. REAPPROPRIATING EXISTING \$\$\$\$\$ DOABLE
3. PUBLIC PRESSURE & AWARENESS NEEDED
4. MULTI STATE COMPETITION HAPPENING



PROTECT or BUILD IT and they will come!



---

---