

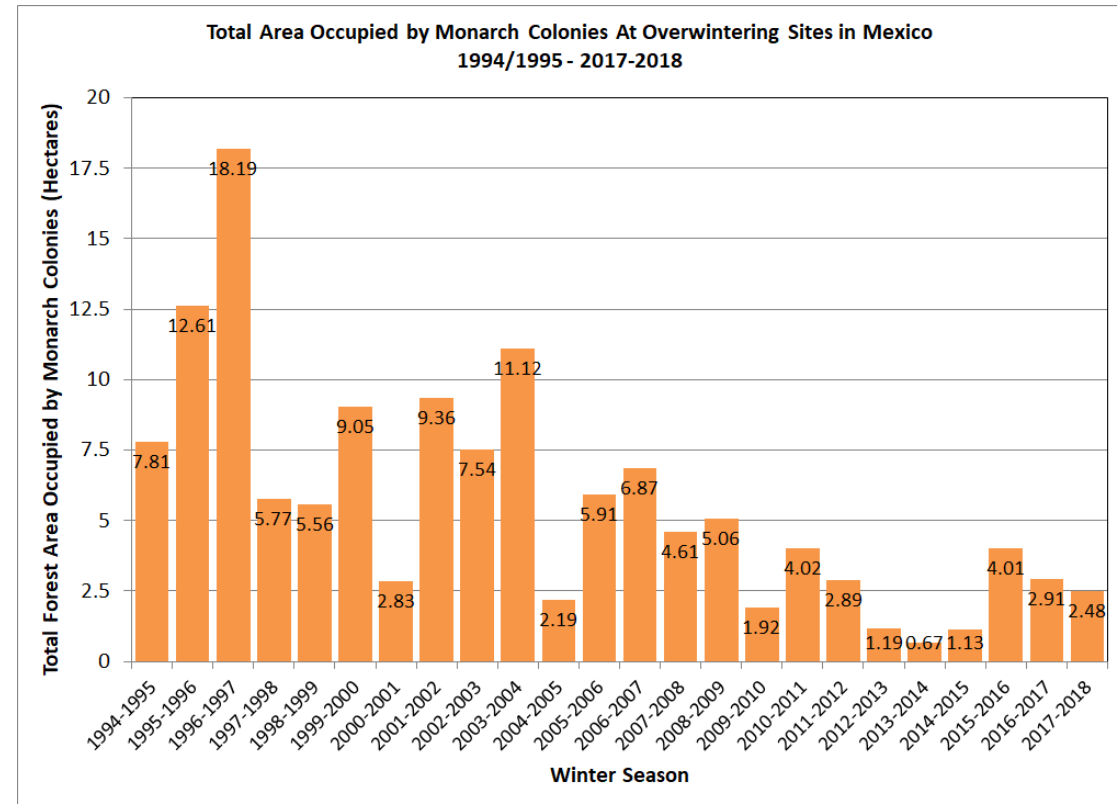
Update on the Nationwide Monarch CCAA for Energy and Transportation Lands

October 25, 2018



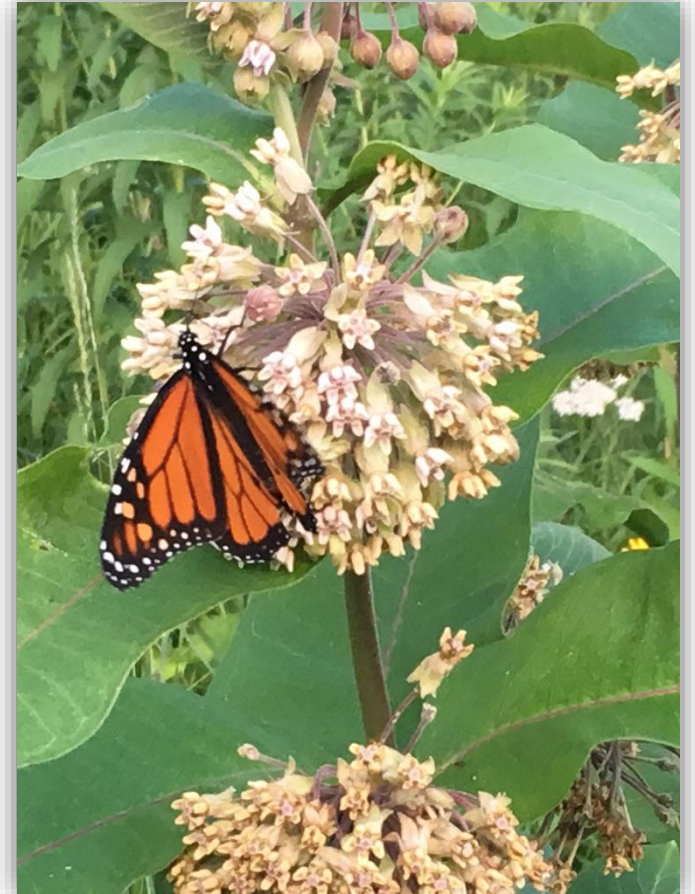
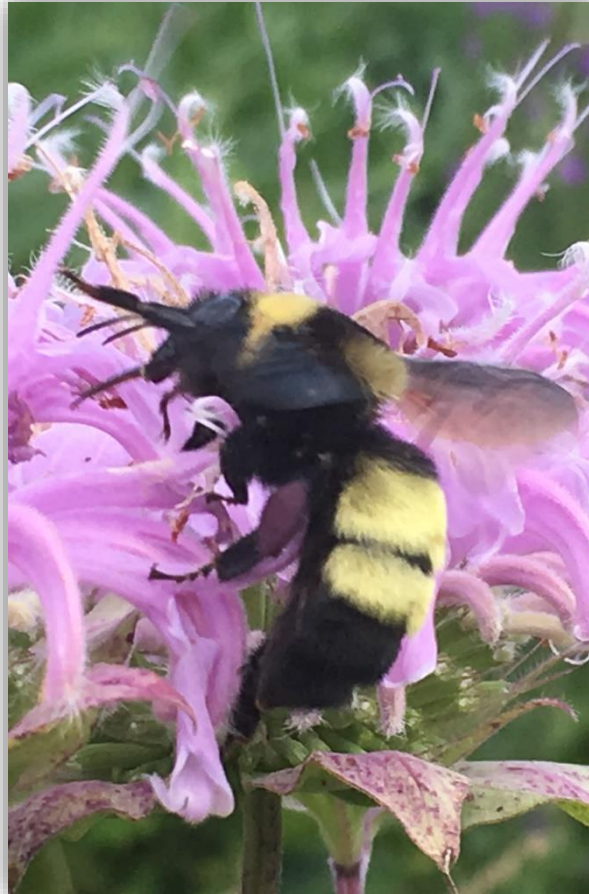
The Need and Purpose

- > Monarchs are being lost:
 - Estimates of over 80% population reductions over the past 20 years.
 - The overwintering estimate from last winter documented a 14.8% reduction compared to the previous year.



Data from 1994-2003 were collected by personnel of the Monarch Butterfly Biosphere Reserve (MBBR) of the National Commission of Protected Natural Areas (CONANP) in Mexico. Data from 2004-2018 were collected by the WWF-Telcel Alliance, in coordination with the Directorate of the MBBR. 2000-01 population number as reported by Garcia-Serrano et. al (The Monarch Butterfly : Biology and Conservation, 2004)

The Need and Purpose



What is a CCAA?

- > Candidate Conservation Agreement with Assurances (CCAA) are voluntary agreements with non-Federal property owners that address:
 - Concerns about providing conservation for a species that in the future may be listed,
 - Must provide net conservation benefit to covered species
 - Address all key threats under property owners' control (manageable threats), and
 - Assurances that USFWS will not require additional conservation measures or restrictions (beyond those described in the CCAA) if the species becomes listed



Why Pursue a CCAA?

- > Monarch declines have led to status review for potential Federal-listing.
- > Having a CCAA in place prior to the listing decision:
 - Provides regulatory certainty,
 - Reduces long-term costs and administrative burden,
 - Helps streamline Section 7 consultation,
 - Builds positive perception for your organization.

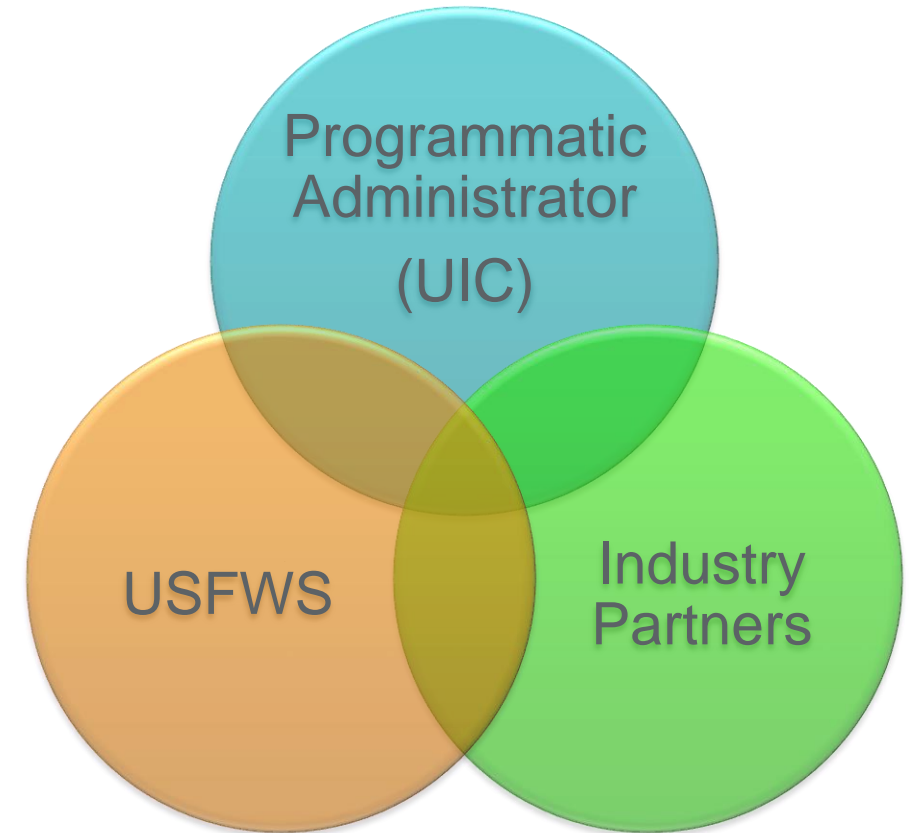
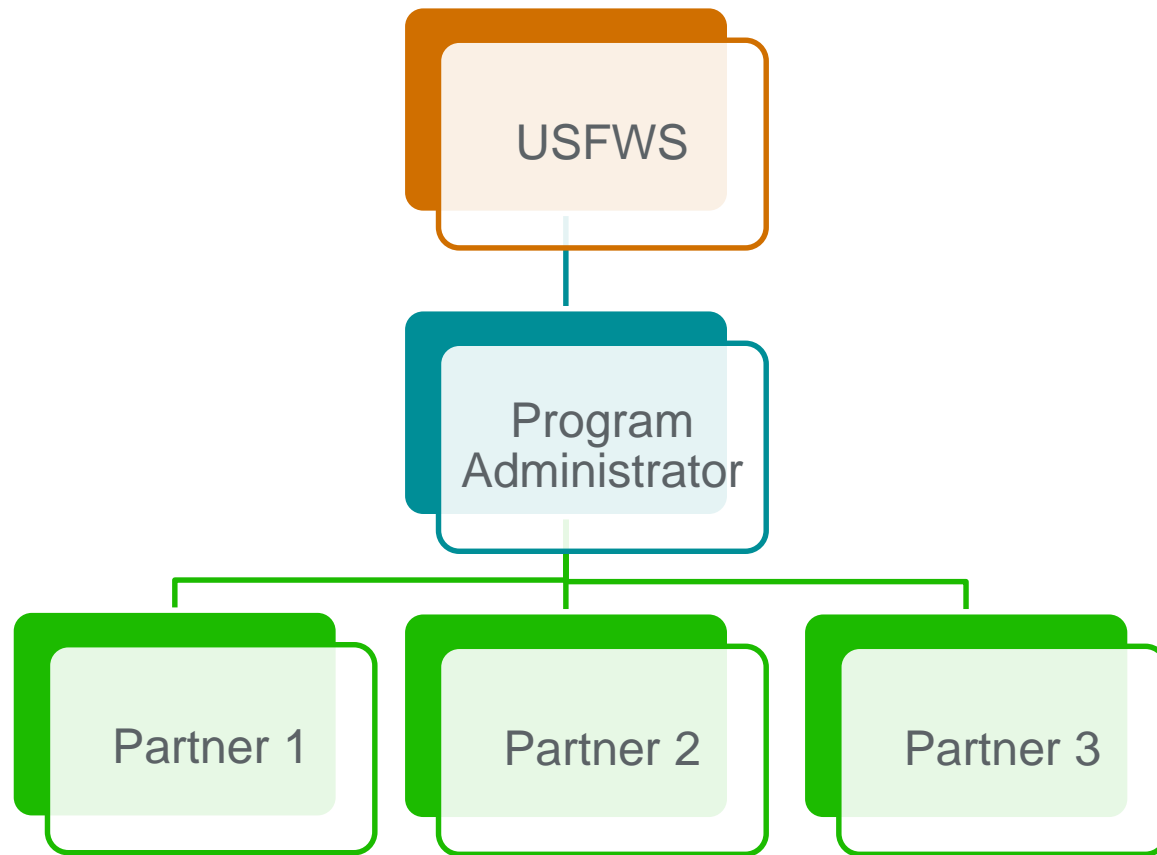


Why are we taking a partnership approach?

- > There are several benefits to pursuing the CCAA *programmatically* through collaboration:
 - Broadly demonstrates industry contributions
 - Provides greatest flexibility across industries
 - Reduces redundancy of efforts/cost
 - Improves quality and streamlines CCAA process
 - Provides partnership value for all parties (USFWS, industry)
 - Addresses USFWS capacity



Who are the Partners in a Programmatic CCAA?



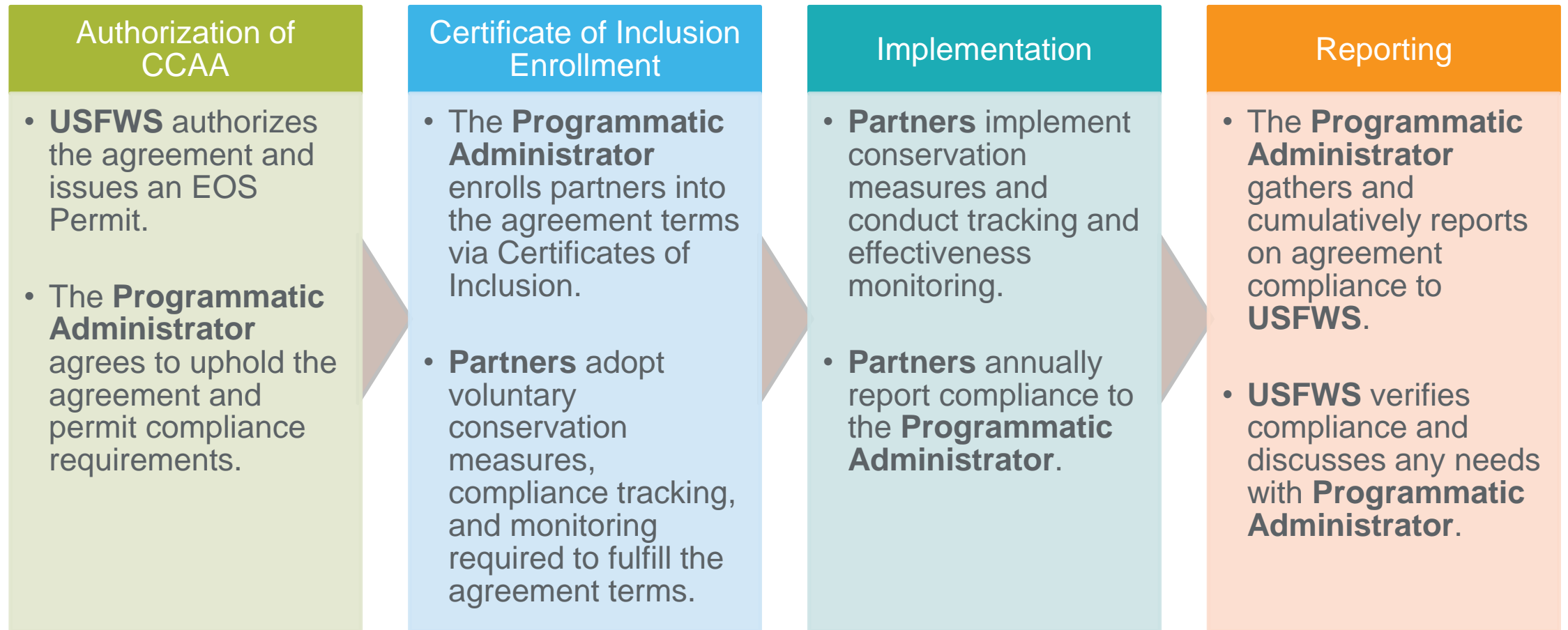
Draft CCAA Goal

- > The CCAA will enroll up to **14 million acres** of energy and transportation lands contributing over **160 million stems of milkweed**, and **1.2 million acres of monarch foraging habitat**, over the coming decades.



Ryan Hagerty, USFWS

How does this all work?



Our Timeline

- > Originally envisioned in October 2017
- > Phase 1, Draft CCAA Preparation (January – November 2018)
- > Phase 2, CCAA Review and Finalization (November 2018 – June 2019)
- > Phase 3, Partner Application and Enrollment (July 2019 – June 2020)

Highlights of the Draft CCAA

- > Encourage voluntary conservation
- > What lands are eligible
- > Establish baseline expectations for participation
- > Coverage/Assurances provided
- > Allow for adaptation and flexibility in implementation of the agreement
- > Provide the U.S. Fish and Wildlife Service with compliance and confidence in the agreement



Brett Billings, USFWS

Encourage Voluntary Conservation

- > Making the agreement accessible by:
 - Encouraging BMPs for pollinator conservation
 - Making the agreement available to multiple industry sectors
 - Minimizing reporting requirements to essential aspects needed
 - Emphasizing voluntary terms and conditions for all parties

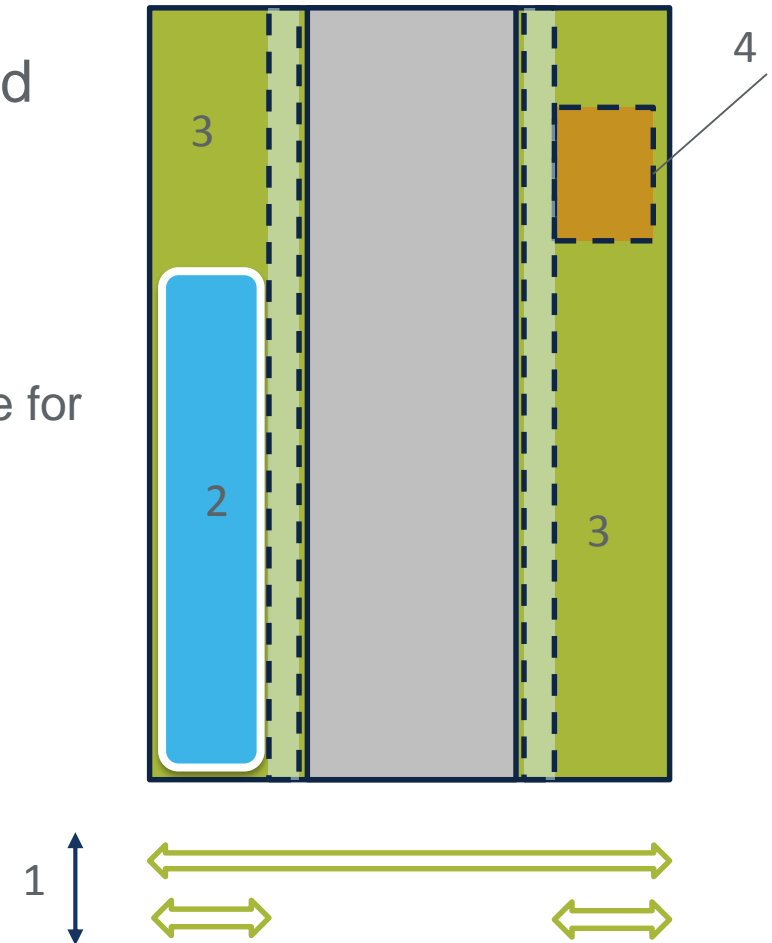


What Lands are Eligible?

Enrolled Lands – The lands (either owned, leased, or managed easements) within the *covered area* and identified by the signed *Certificates of Inclusion* of all *Parties*.

Enrolled lands contain:

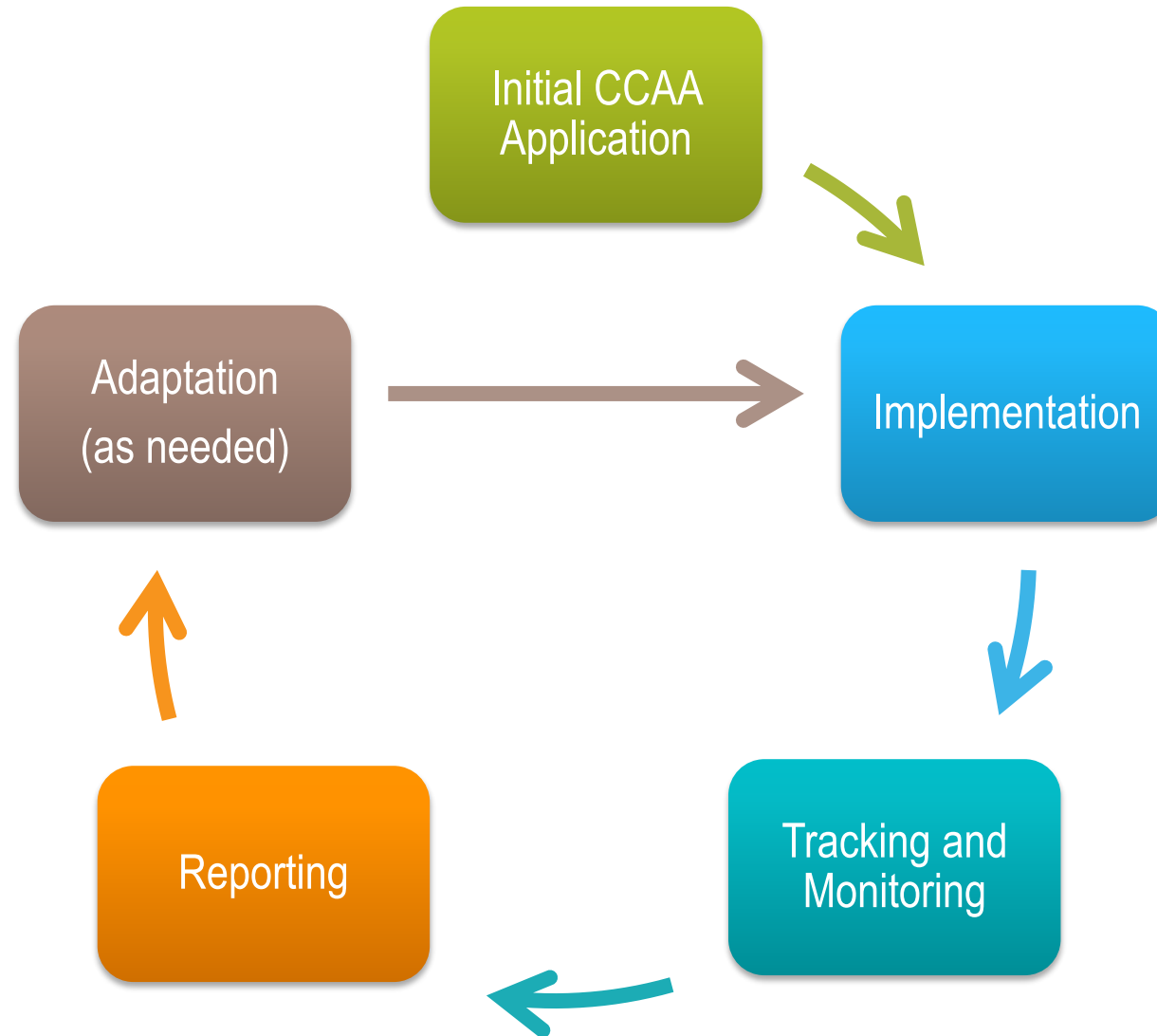
1. The full extent of lands where you are seeking assurances/coverage for activities and conservation measures (including owned, leased, or managed easements).
2. Areas where you conduct active conservation in a given year.
3. Areas that are left idle and provide suitable habitat in a given year (temporary or permanent set-asides).
4. Areas of suitable habitat that may be permanently lost by future construction.



Expectations for Participation - Baseline Requirements

Aspect	Expectation
Application	Short summary (1-2 pages) of lands being enrolled and management being conducted.
Implementation	Partners select conservation measures that address key threats to the species within their management control.
Tracking	Simplified annual tracking of conservation efforts, which can include coarse scale summarization.
Effectiveness Monitoring	Evaluate a subset of enrolled lands to summarize the cumulative availability of habitat managed in the agreement.
Reporting	Compliance reporting – simplified and completed annually. Effectiveness monitoring – Compiled data provided between every 1 to 3 years.
Adaptation	Partners work with Program Administrator and Service when needs arise that require consideration to modify or adapt aspects of the agreement.

Expectations for Participation - Annual CCAA Life Cycle



What Conservation Measures are Expected?

> Select conservation measures that address key threats to suitable habitat on your system:

- Habitat conversion or loss
- Mowing
- Herbicide use

Conservation Measure
Seeding and planting to restore or create habitat
Conservation mowing to enhance floral resource habitat
Targeted herbicide treatments
Prescribed burning to promote suitable habitat
Controlled grazing to promote suitable habitat
Brush removal to promote suitable habitat
Suitable habitat set-asides (temporary or permanent)

What do I get for participation in the agreement?

- > USFWS provides regulatory assurances authorized by ESA:
 - Section 7 of the Act requires the Service to review/use programs to further the purposes of the Act. Through the CCAA Policy, the Service uses Candidate Conservation program to further conservation of fish and wildlife.
 - Section 10(a)(1)(A) of the Act allows the Service to issue permits for acts that would otherwise be prohibited if such acts are expected to enhance the survival of the affected species.

- > Once approved, the Service will:
 - Not require additional conservation measures nor impose additional land, water, or resource use restrictions beyond those voluntarily agreed to and described in the “Conservation Measures” and “Covered Activities” sections of the CCAA.
 - Review, when needed, assurances tied to the effects of “changed circumstances” and “unforeseen circumstances.”



What Activities are Covered by Assurances?

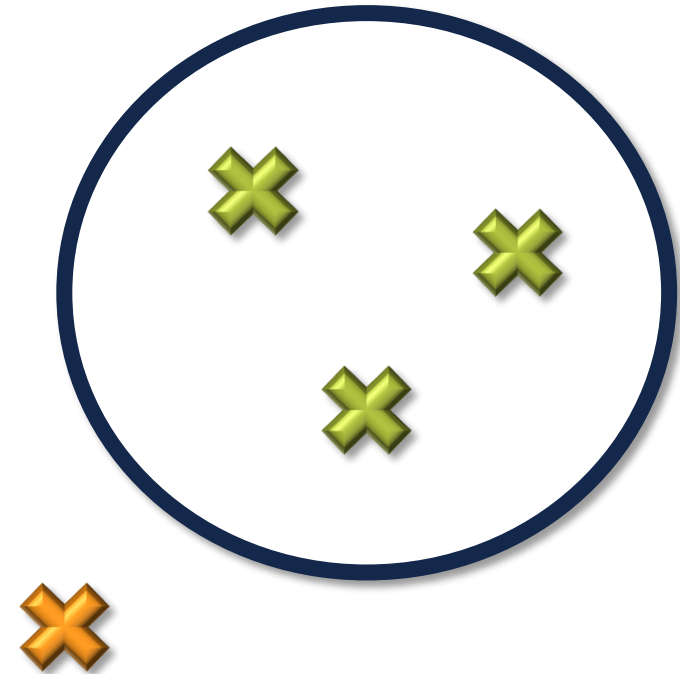
> Assurances provided for:

- Operations and maintenance
- Construction on existing lands

Covered Activity
General Operations
Survey and Inspections
Vegetation Management as part of Conservation Measures
Vegetation Management that may Impact Habitat
Structural Maintenance
Facilities Management and Maintenance
Construction within Existing ROW
Emergency Response Activities

What is Excluded?

- > Any activity conducted outside of areas included in *Enrolled Lands*
- > Construction projects on new ROW easements or acquired lands
- > Activities that may pose loss of other Federal-listed species



Where are we going from here?

					Phase 2. CCAA Finalization							
Task #	Task Name	Task Lead	Start	Finish	2018		2019					
					Nov	Dec	Jan	Feb	Mar	Apr	May	Jun
1	Pre-application briefings and coordination within Service	USFWS w/ UIC and Cardno	10/16/2018	12/5/2018								
2	Conduct USFWS Inter-regional Review and Initiate Sumame Review	USFWS	12/5/2018	12/20/2018								
3	Submit Documents to Federal Register	USFWS	12/17/2018	12/20/2018								
4	Conduct Outreach to State Wildlife, Tribal, and other Federal Agencies	USFWS w/ UIC and Cardno	12/20/2018	4/1/2019								
5	Federal Register Publication	USFWS	4/1/2019	4/19/2019								
6	Public Comment Period Support	USFWS w/ Cardno support	4/19/2019	5/20/2019								
7	Authorization of the Final CCAA	USFWS	6/3/2019	6/28/2019								

How to Get Involved?

> If you want to learn more:

- Check out a more detailed webinar posted online:
[**http://rightofway.erc.uic.edu/resources/webinars/**](http://rightofway.erc.uic.edu/resources/webinars/)
- Check out tomorrow morning's session discussing details of the CCAA, plus open Q&A.
- Talk to Iris, Dan, Laurel, or other CCAA Advisory Team members.



How to Get Involved?

> If you are already interested, involved, or wanting to contribute:

- Identify your organization's interest / capacity to participate
 - Direct funding and/or
 - In-kind resources/expertise on sector or technical teams
- Continue to coordinate input through the Rights-of-Way as Habitat Working Group
- Support our application and Draft CCAA as it undergoes formal review!



THANK YOU to our CCAA Advisory Team Partners!

- Alliant Energy
- Ameren
- American Electric Power
- American Transmission Company
- Arizona DOT
- California DOT
- Colorado DOT
- Connexus Energy
- ComEd
- Cypress Creek Renewables
- Delaware DOT
- Duke Energy
- Evergy
- Exelon Generation
- Federal Highway Administration
- FirstEnergy
- Fresh Energy
- Georgia DOT
- Grow with Trees Company
- Idaho DOT
- Illinois DOT
- Indiana DOT
- Iowa DOT
- IVM Partners
- Maine DOT
- MAFWA
- Minnesota DOT
- National Rural Electric Cooperative Association
- NextEra Energy
- NiSource
- Ohio DOT
- Pine Gate Renewables
- TransCanada
- We Energies
- Wisconsin DOT