

AEP-EPRI ROW Vegetation Research Project at The Dawes Arboretum

**Tim Lohner, Ph.D.
American Electric Power**



The Dawes Arboretum









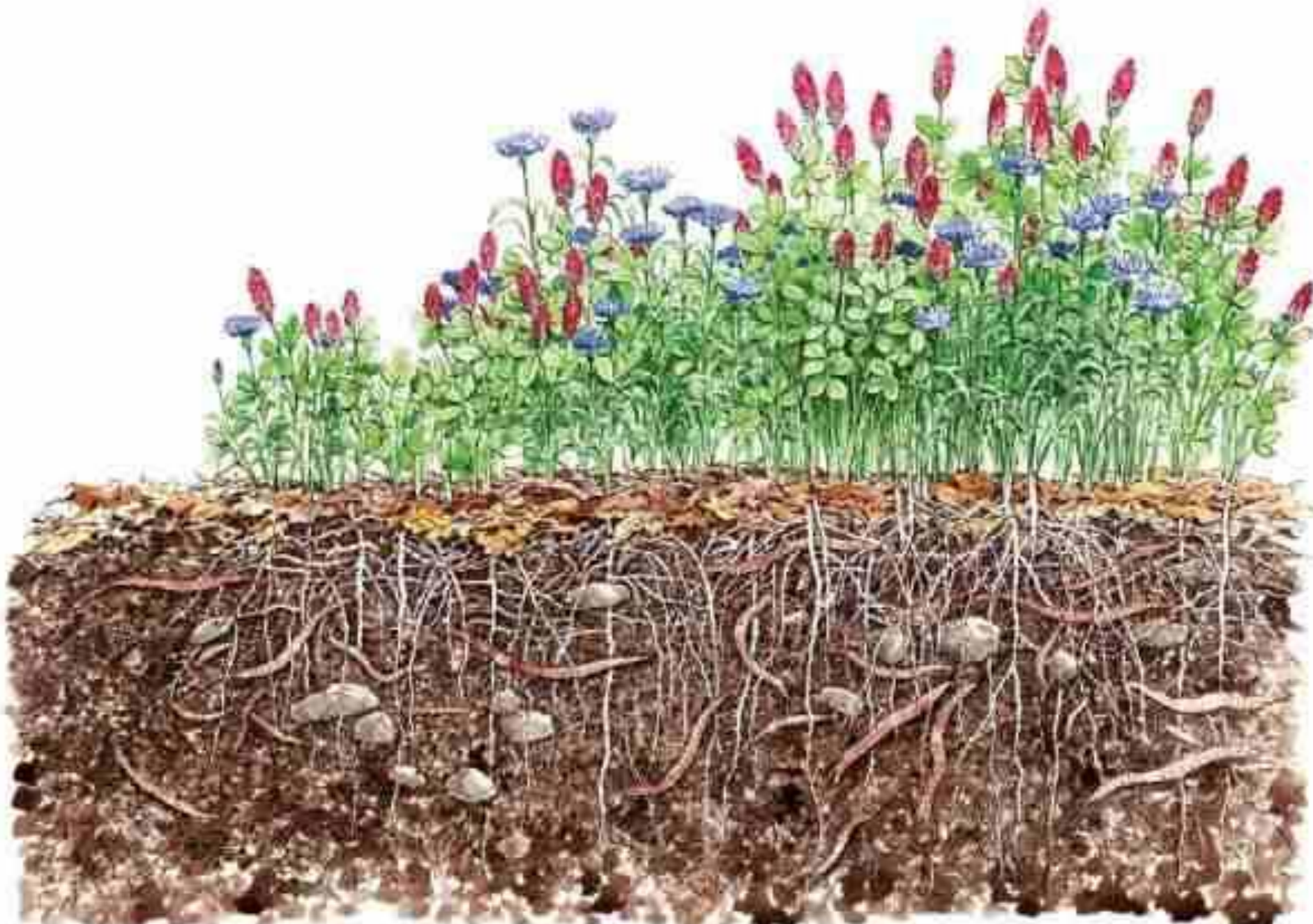
- **Erosion Control**
- **Woody Plant Suppression**
- **Ecological Benefits**
- **Community Engagement**





Clinch River where natives were planted (note native grasses, clover and partridge pea)







Newark, OH

The Dawes Arboretum

VISIT

EXPLORE

DISCOVER

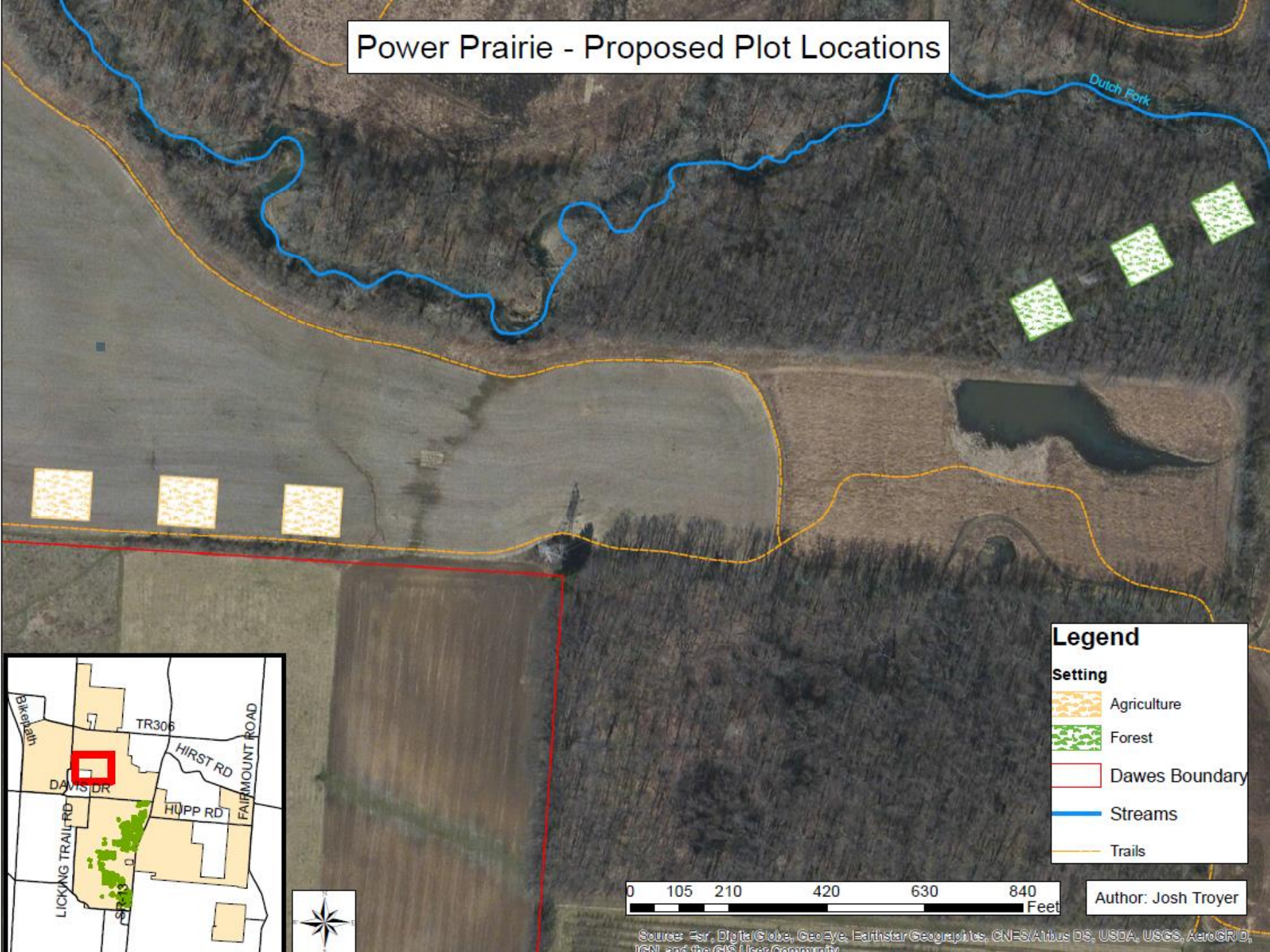


Habitat Restoration



**NATIVE
PRAIRIE
PLANTS**
**PLEASE DO NOT
SPRAY OR MOW**
The following information
is for informational purposes only.
It is not intended to be used for
any other purpose.

Power Prairie - Proposed Plot Locations



Legend

Setting

- Agriculture
- Forest
- Dawes Boundary
- Streams
- Trails

0 105 210 420 630 840 Feet

Author: Josh Troyer

Source: Esri, DigitalGlobe, GeoEye, Earthstar Geographics, CNES/Airbus DS, USDA, USGS, AeroGRID, IGN, and the GIS User Community













An AEP Company

BOUNDLESS ENERGY®

Dawes Arboretum
Newark, OH

Tim Lohner, Ph.D.

Environmental Services
American Electric Power
1 Riverside Plaza
Columbus, OH 43215
614-716-1255
twlohner@aep.com



**AMERICAN
ELECTRIC
POWER®**