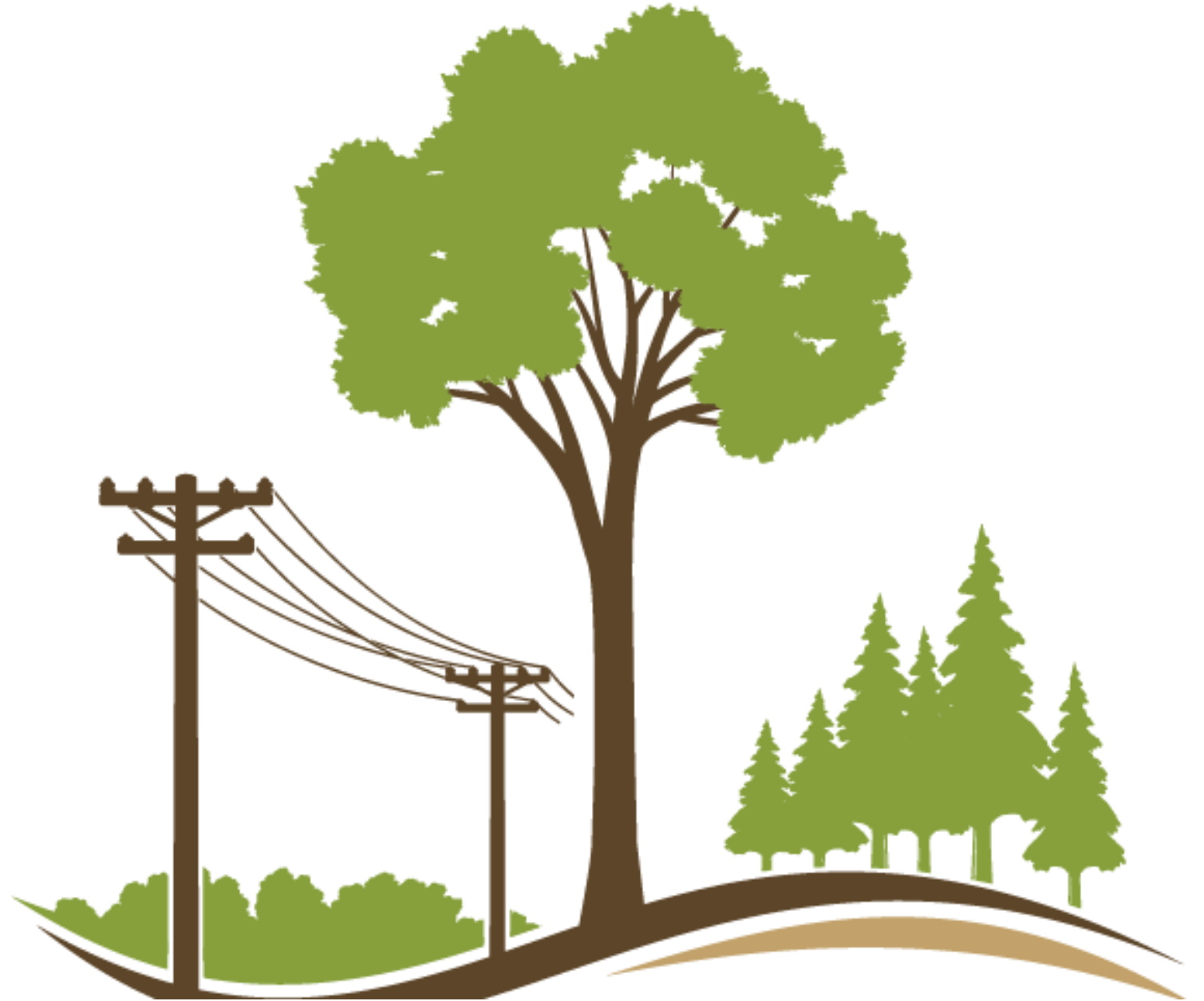


Stan Vera-Art

Chair,
Managing Thriving Ecosystems
Task Force



UAA's New Core Value:

Environmental Sustainability



UAA
UTILITY ARBORIST ASSOCIATION



UAA CORE VALUES

*"A culture of **safety**,
environmental sustainability,
and **operational excellence** are
the foundation on which our
vision and mission are built."*



UAA Task Force

Managing Thriving Ecosystems on ROWs

Practices - Updates to UAA website, Spotlight on the environment in the UAA NewsLine, Environmental summits.

Tools & Techniques - Rapid assessment tools, environmentally focused RFP's and contract types.

Key Knowledge Gaps - Industry memory loss, secondary ecological benefits.



THE STEWARDS

Environmental Stewardship Video





UAA's Beyond Compliance Survey

The 2003 blackout led to strict FERC/NERC regulations for vegetation management.

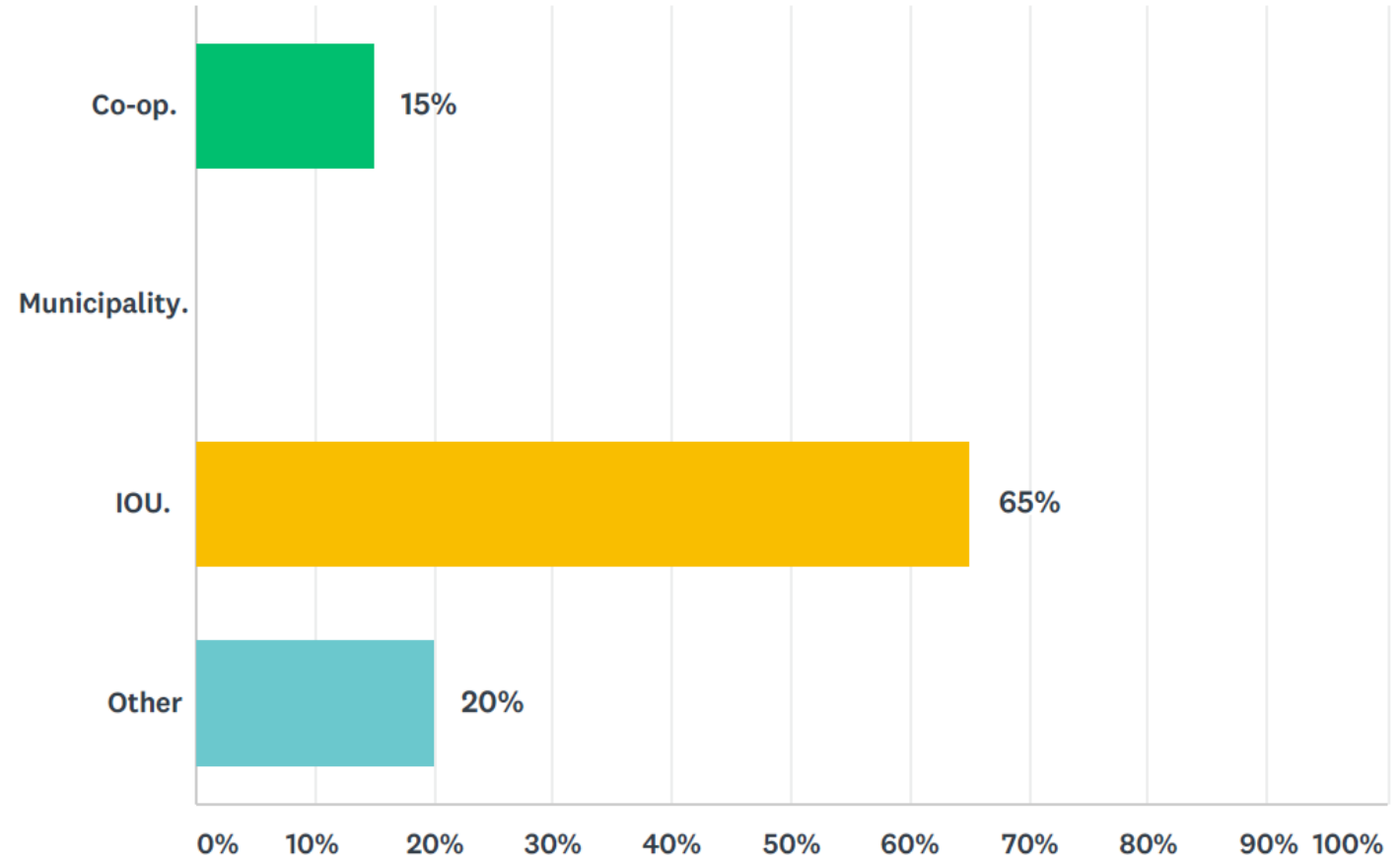
Utilities have primarily focused on structurally-oriented BMPs to get their systems in compliance with FERC/NERC.

Are utilities ready to focus beyond compliance?

Are utilities prepared to adopt ecologically-oriented BMPs?

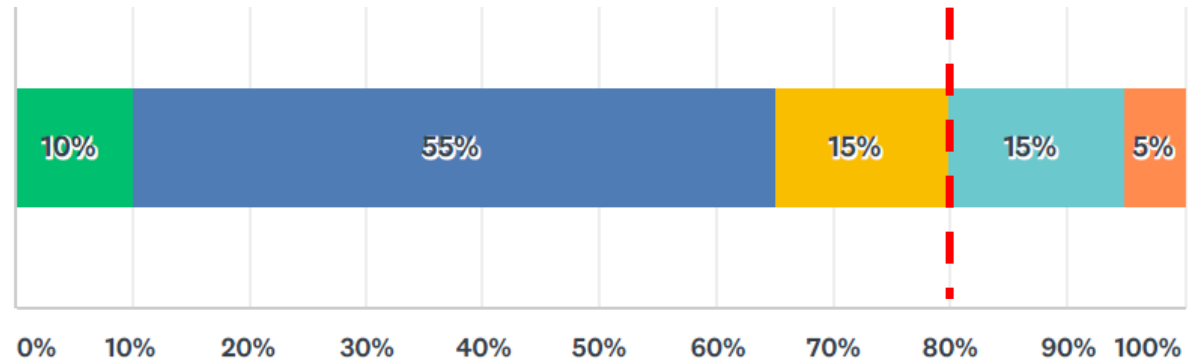


The organization you are associated with is a(n):





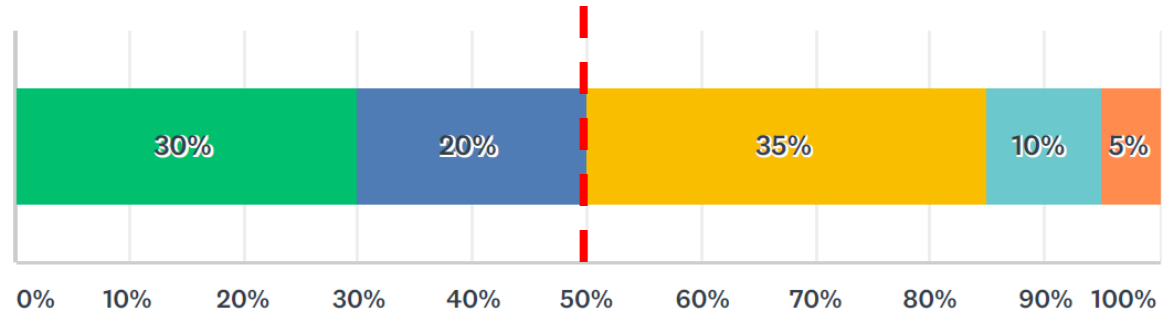
Does your department receive upper management support to implement environmental and sustainable ROW vegetation management practices?








- No, not currently.
- Somewhat, it's on their radar.
- Yes, cautiously.
- Yes, upper management sees the value in managing for quality habitat on ROW.
- Other (please specify)



Is your organization in a position to manage ROW vegetation beyond compliance (meaning proactively manage for a biodiverse, pollinator friendly, predominantly native compatible ROW habitat)?



	No, my organization is currently focused only on keeping our ROW vegetation in compliance.	30%
	Managing beyond compliance may be possible on only those ROW sections that currently meet compliance. My organization is interested to move beyond compliance.	20%
	Yes, my organization is moving beyond compliance on selected ROW sections.	35%
	Yes, my organization is in-compliance and is actively moving beyond compliance across our entire network.	10%
	Other (please specify)	5%



If you were to rank the top hurdles to overcome to start managing for a biodiverse, predominantly native compatible ROW habitat, what would they be?

To get proper upper management buy in.

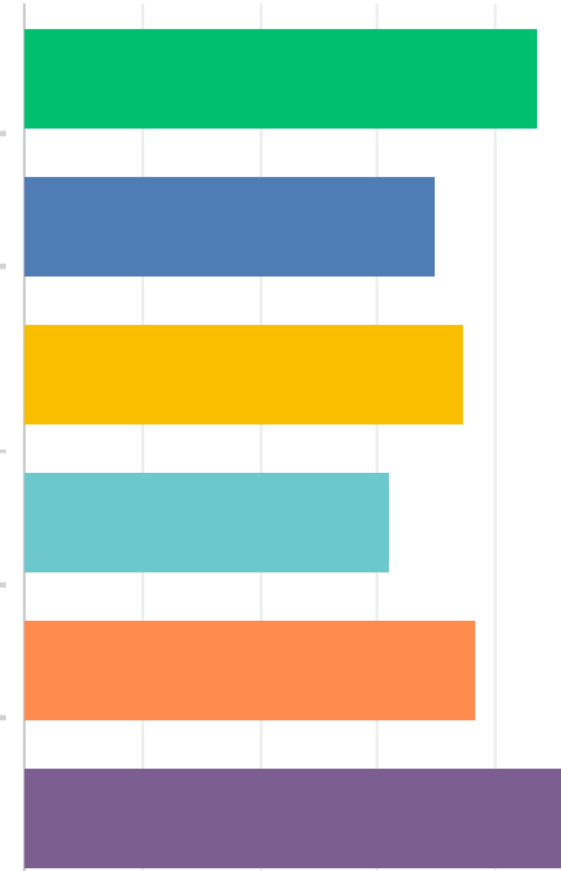
Having easy access to knowledge and expertise on shrubs and herbaceous plants.

Communicating new technologies and practices to employees and subcontractors in an effectively and timely manner.

The lack of ecologically oriented Best Management Practices.

Cultural mindset of what a ROW should look like (clean floor, straight walls).

Perceived higher costs.





Sustainability Indices

Between 2014 and 2016 the US saw Sustainable Responsible Investment assets grow by 32.7% from \$6.5 trillion to \$8.7 trillion.

Environmental, Social and Governance (ESG) Indices

Managing for Natural Resources can play an increasingly important role, impacting and informing sustainable indices.

Additional Media Outreach

Documentary





Questions? Comments?

Stan Vera-Art - branchout@growwithtrees.com