

PARTNERING ACROSS INDUSTRIES

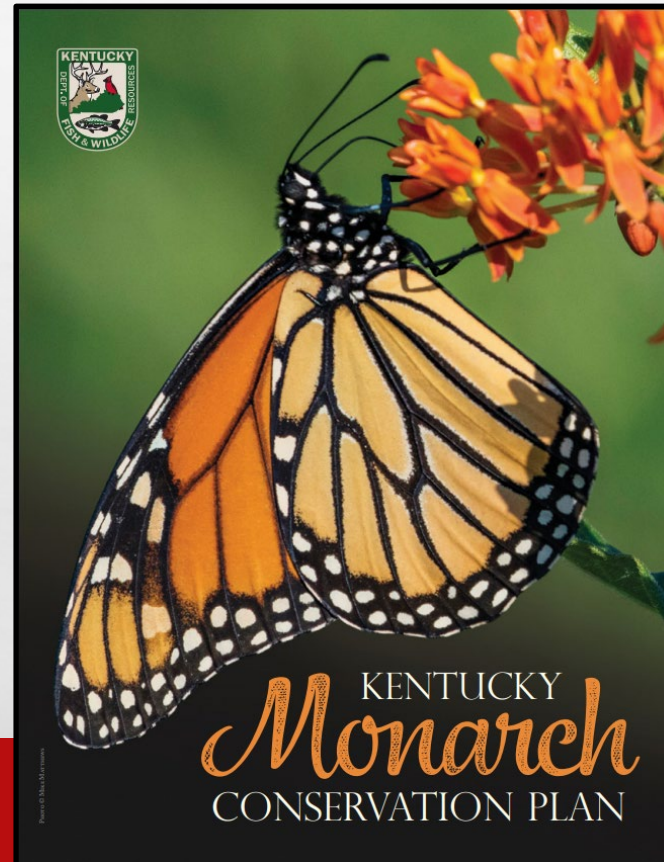
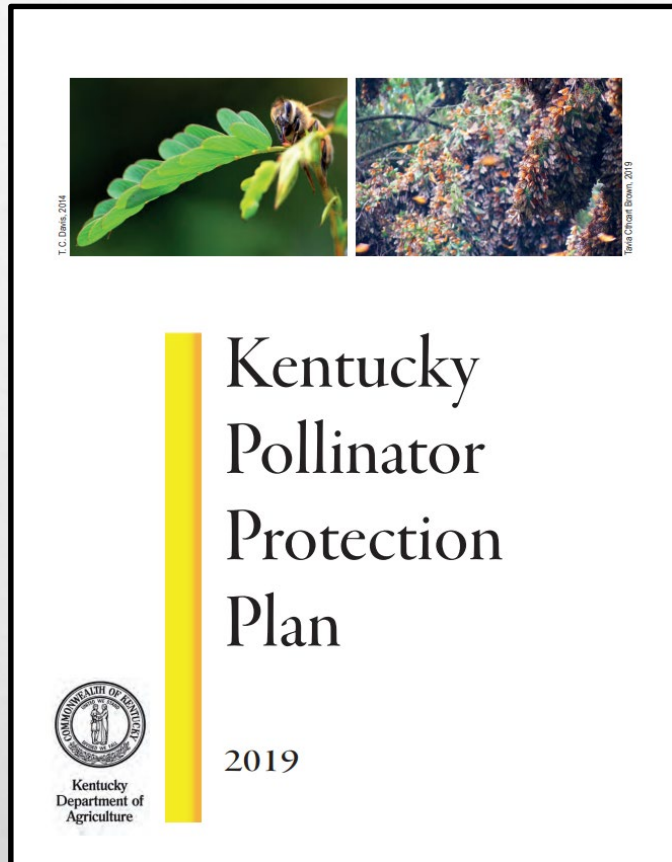
**KY TRANSPORTATION CABINET
& COLUMBIA GAS**

PRESENTED BY: ELLEN MULLINS
KY TRANSPORTATION CABINET

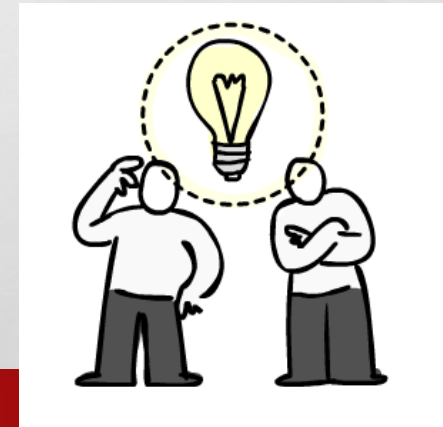


State – Level Initiatives

with participation by multiple stakeholders



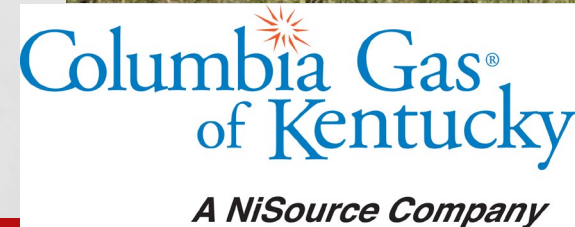
Right-of-Way Section
Subgroup





ROW PARTNERSHIP

- **Columbia Gas identified multiple sites of overlapping utility lines & KYTC ROW with pollinator potential**
- **Meeting & site visits to narrow options**
- **Selected 2 initial sites to establish pollinator habitat, starting in 2019**
 - 1 Georgetown, KY
 - 1 Frankfort, KY
 - + Lexington Bluegrass airport (non-KYTC)
- **Columbia Gas applied for Right-of-Way Encroachment Permits from KYTC local District offices**



Surprise!



'Other' Utility Actions

"In-Progress" Signage

KY State Capitol View



ARBORMETRICS
PEOPLE ARE OUR POWER

Columbia Gas
A NiSource Company
"Enhancing our environment"

Nutrien
Solutions

Future Site of Monarch Waystation

Contractors
grow with trees
SUSTAINABLE ROW SOLUTIONS

FORELL
INNOVATION

The Bee & Butterfly
Habitat Fund
A Unique Conservation Solution.



KEYS TO SUCCESS?

- Both parties interested in pollinator habitat
- Great levels of response, initiative, & collaboration
- Sharing networking contacts, experiences, & industry knowledge
- Actually Scheduling meetings & Setting timeline goals

MORE ABOUT COLUMBIA GAS/NISOURCE



- Looking to link with more local pollinator groups in service territories
- Developed a great App "[CG Plant Pro](#)" to help their field staff ID plants & share information
- First public utility to have IVM program Certified by the [National Turkey Foundation](#)