

Energy for Ecosystems:

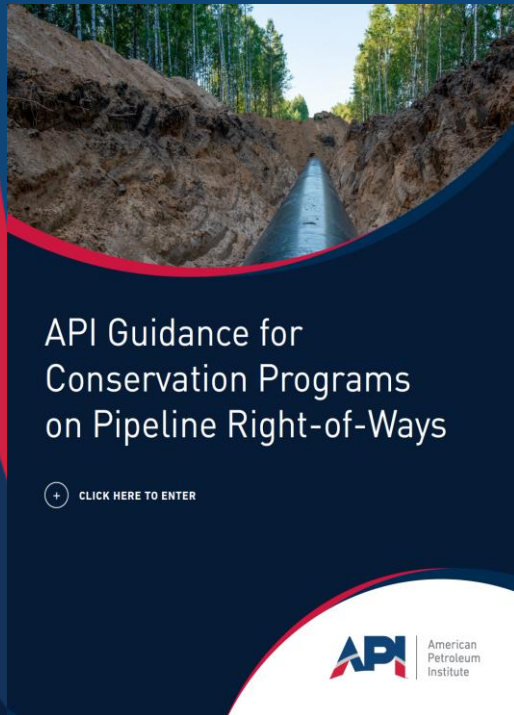
Implementing a new vision for asset
management

March 2023

Midstream Conservation Program - Drivers

- Criteria change to acquire “Social License to Operate”
- Greater focus on environmental, social & governance (ESG) Issues
- Industry reputation & credibility (e.g. “green washing”)
- Political pendulums
- Lack of industry narrative
- Local nature of industry segment
- Inconsistency throughout the industry
- Right thing to do

Midstream Conservation Guidelines - Overview



- In Spring 2021, Member Companies directed API to form a Task Force to further investigate how to develop a conservation program for midstream right-of-ways (ROWs) and assets.
- Conservation includes using vegetation management, habitat management, and coastal management techniques to produce positive environmental and community outcomes while maintaining the highest standards of safety and compliance.
- The Guidelines will provide midstream operators with a resource that can help augment and establish consistency consistency in their conservation efforts.
- The content includes “how-to’s” for pipeline and other midstream operators on developing a business plan, engaging the community, identifying sites for conservation, identifying and implementing conservation practices, and monitoring and adapting.

Midstream Conservation Program - Principles

- Respect
- Integrity
- Safety and Environmental Responsibility
- Openness and Responsiveness to Community Concerns
- Engagement and Contribution

Guiding Principles and Practices

Conservation program guidance is grounded in many of API's principles and practices that have been adopted by member organizations and industry.

API's Principles²:



Respect

Pipeline operators treat stakeholders with respect because we value relationships within the communities we serve. We demonstrate respect by listening to questions, understanding concerns, and sharing our own perspectives. Considering and respecting others' points of view are critical to establish long-term relationships.



Integrity

By operating with integrity, the pipeline industry strives to build and maintain positive, constructive, and trusting community relationships. Pipeline operators maintain a presence as leaders in the community with a reputation for forthright engagement on issues important to their stakeholders.



Safety and Environmental Responsibility

The pipeline industry is committed to safety and the protection of the environment and public using clearly defined policies and practices. The goal is to operate daily in a manner that protects the safety, environment, and health of communities, employees, and contractors with zero incidents.



Openness and Responsiveness to Community Concerns

Engagement and effective communication with the public forms a core element of safety management. Through the engagement process, pipeline operators thoroughly manage risk and establish genuine public partnerships. When speaking to community members, we follow basic communication principles that can form the foundation for credibility, improved dialogue, and understanding.



Engagement and Contribution³

The collaboration with partners in the community and within member organizations drives industry to make a difference and have a positive impact on the environment, community, and ecosystem. Through the contributions of company employees and volunteers, industry strives to deliver positive social, environmental, and economic impacts to make the world a better place.

² API Community Engagement Guidelines, 2020 (<https://www.api.org/-/media/Files/Policy/Infrastructure/2020/API-Community-Engagement-Guidelines>)

³ API RP 1185, Pipeline Public Engagement



Midstream Conservation Program - Objectives



Simplified Planning

- Establish planning team (P)
- Engage internal and external stakeholders (P, D, C, A)
- Document opportunities and constraints (P)
- Evaluate potential techniques (P)
- Implement techniques (D)
- Document results and learnings, adjust as needed (C, A)



Full Planning

- Establish planning team (P)
- Engage stakeholders and build community partnerships (P, D, C, A)
- Develop business case (P)
- Identify and assess current state of ROW (P)
- Setting objectives for the ROW site (P)
- Evaluating potential conservation practices (P)
- Implementing conservation best practices and techniques (D)
- Monitoring and adapting (C, A)

Develop a program that facilitates the management of Pipeline Rights-of-Way (ROW) and other midstream operations with a mindset towards conservation and habitat management

1. Create a positive, forward-leaning narrative for the oil and natural gas industry through the development of tangible actions and projects
2. Design a program that focuses on broad industry benefits while allowing for individual company/project benefits
3. Provide a venue that facilitates relationship building with non-traditional partners
4. Streamline workflow and minimize costs by developing a consistent but flexible process
5. Create a vehicle to “force-multiply” or “supersize” initiatives
6. Continue to evolve the program over time to further support the “journey” of member companies

Midstream Conservation Program – Challenges

- Perfect is the enemy of good
- Culture change
- Industry draw to newer and younger employees
- Leadership demographics
- Lack of education, understanding, competency & vision
- Variability throughout the industry
- Hard vs. soft skills
- Proof points

Thank You

Robin Rorick
rorickr@api.org

Mary Youpel
youpelp@api.org