

Lightning Talk

# Empowering Communities to Restore Critical Monarch Butterfly Habitat in Southern California

---

Ida Kaller-Vincent

Earth Discovery Institute





# Earth Discovery Institute's Native Milkweed Farm

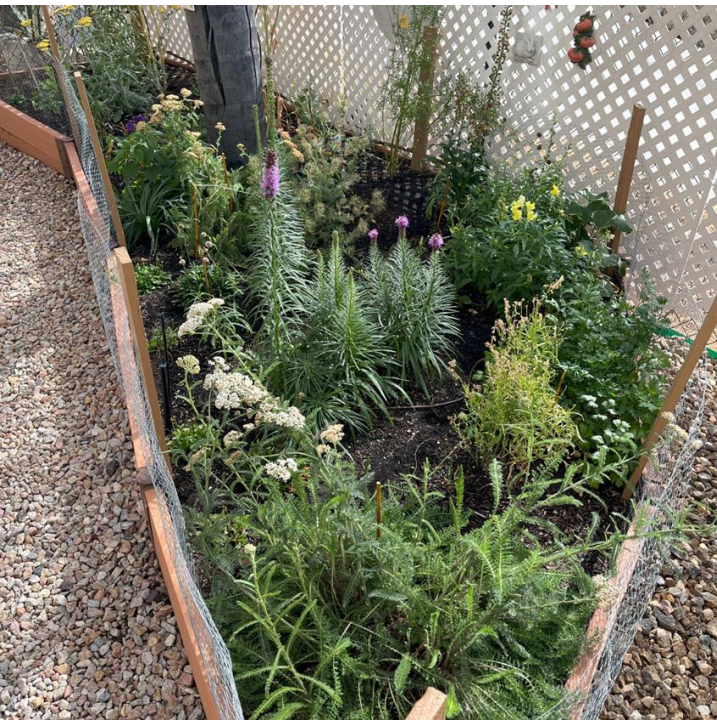
- Seed collected from the wild in San Diego County
- Provide native milkweed to the community and restoration efforts
- Partnered with:
  - San Diego Pollinator Alliance
  - US Fish and Wildlife
  - Endangered Habitats Conservancy
  - Supported by MALK Nature Fund
- Third-generation seeds
- 2024 bumper crop of Narrowleaf Milkweed (*Asclepias fascicularis*) seeds





# Monarch Butterfly Gardens Project

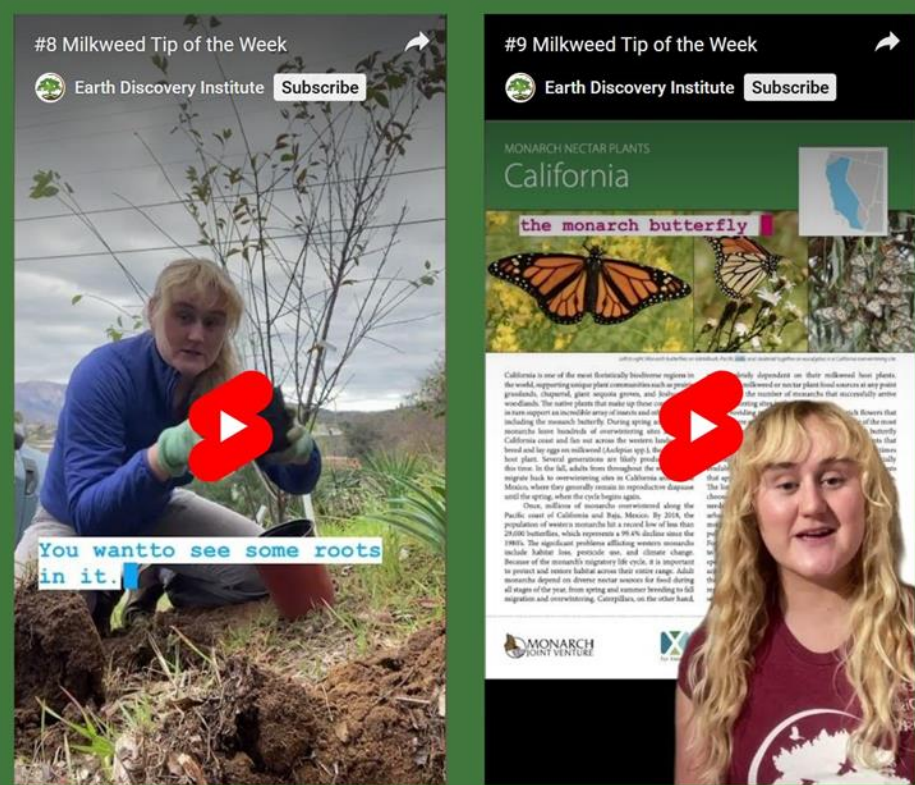
- Create urban Monarch Butterfly waystations
- Selected 28 garden recipients from resource-poor and park-poor neighborhoods in San Diego County
- 155 square meters of habitat installed in 2024





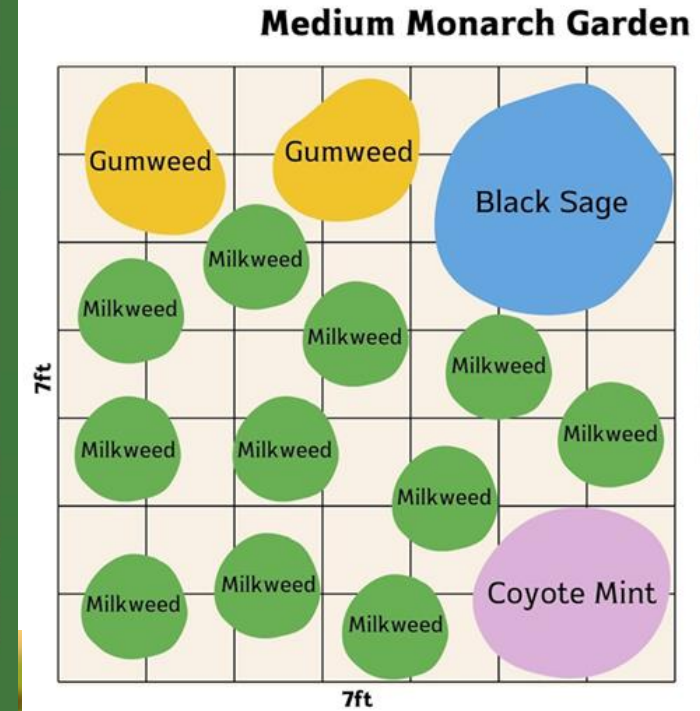
# Community Outreach

- Tip of the Week Series
- Sample garden plots
- Facebook Live Q and A



Planting Native Milkweed

Nectar Plants



**Watering Tips:**  
Depending on drainage, plants in your yard may need more or less water than we recommend. You do not want to overwater native plants, so experiment with how long your plants can last before beginning to wilt. After a couple years, your established natives may only need occasional summer watering.

#### Narrowleaf Milkweed (*Asclepias fascicularis*)

**Care:** Full sun, water deeply 1-3x a week. This plant goes dormant in winter; stop watering during winter and cut back dead stems. **Bloom season:** Summer

#### Black Sage (*Salvia mellifera*)

**Care:** Full sun. Water once a week first 5 months. Once established, water once a month or every other week. **Bloom season:** Summer-Fall

#### Coyote Mint (*Monardella villosa*)

**Care:** Full sun/partial shade. Water once a week first 5 months. Once established, water once a month or every other week. **Bloom season:** Spring-Fall

#### Gumweed (*Grindelia camporum*)

**Care:** Full sun. Water once a week first 5 months. Once established, water once a month or every other week. **Bloom season:** Spring-Fall