

# Integrated Habitat Management

---

MIKE RETTERER, PHEASANTS FOREVER

# The Forever ROW&E Program

- Assess vegetation
- Develop Integrated Habitat Management Plan / Develop sustainable habitat program
- Engage community landowners
- Advocate / implement conservation policies / practices
- Identify and overcome industry challenges



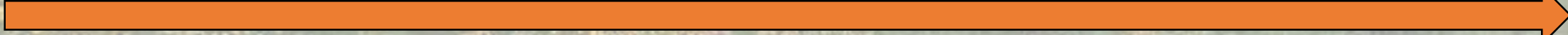


# Mowing

# Conservation Mowing

# IVM

# IHM



- Weed control
- Woody control
- Compliance
- Grass dominated



- PNS
- Increased diversity
- Residual cover
- Increased forage
- Nesting sites
- Thermal cover
- Predator escape
- Pollinator migration



- Significant increase in diversity, forage, cover (nest, thermal, escape)
- Migration Corridors





# IVM and IHM

## Integrated Vegetation Management

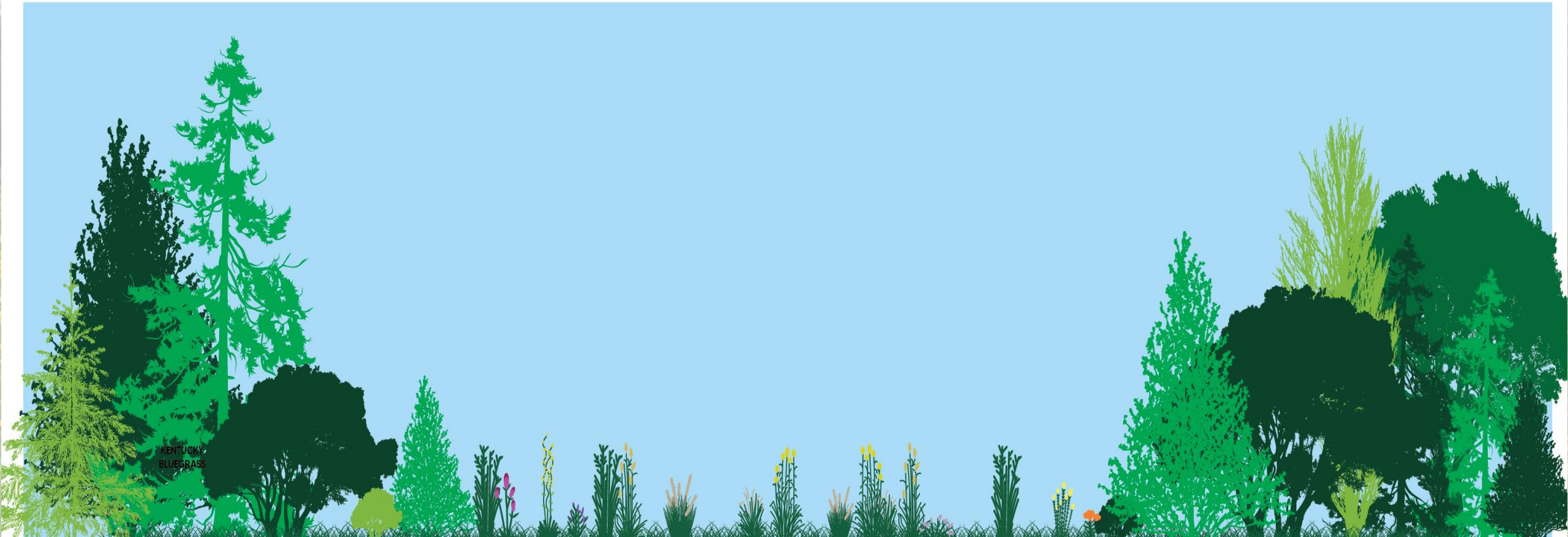
- Promote stable, low growing veg using environmentally sound and cost-effective control
- Eliminate non-compatible veg
- Maintain regulatory compliance
- Mechanical, biological, chemical
- Balance: cost, control, environmental quality, public health and safety
- Control of invasive, noxious AND undesirable species

## Integrated Habitat Management

- Integrated vegetation management PLUS
- Intentional to also benefit wildlife / conservation
- Environmental Outcomes
- Promote early successional habitat communities and their ecological benefits
- Enhancements for additional benefits
- Connect project local people and natural communities (wildlife, pollinator, agriculture, corridors, habitat)







**BORDER ZONE** : **PIPE ZONE** : **BORDER ZONE**

 CORTEVA  
agriscience

*Illustration not to scale*

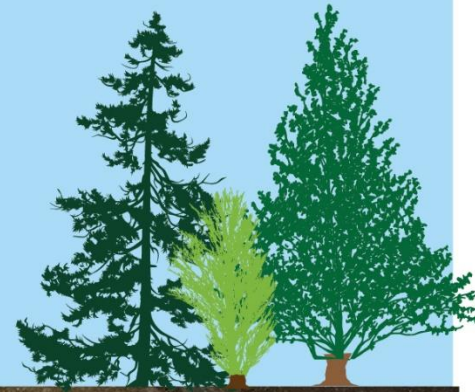
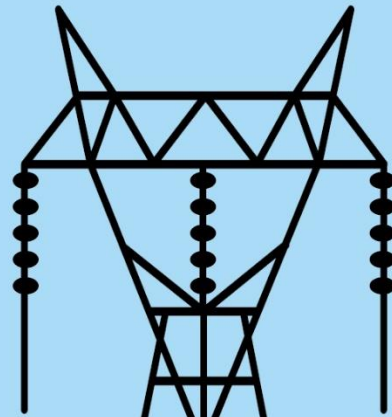




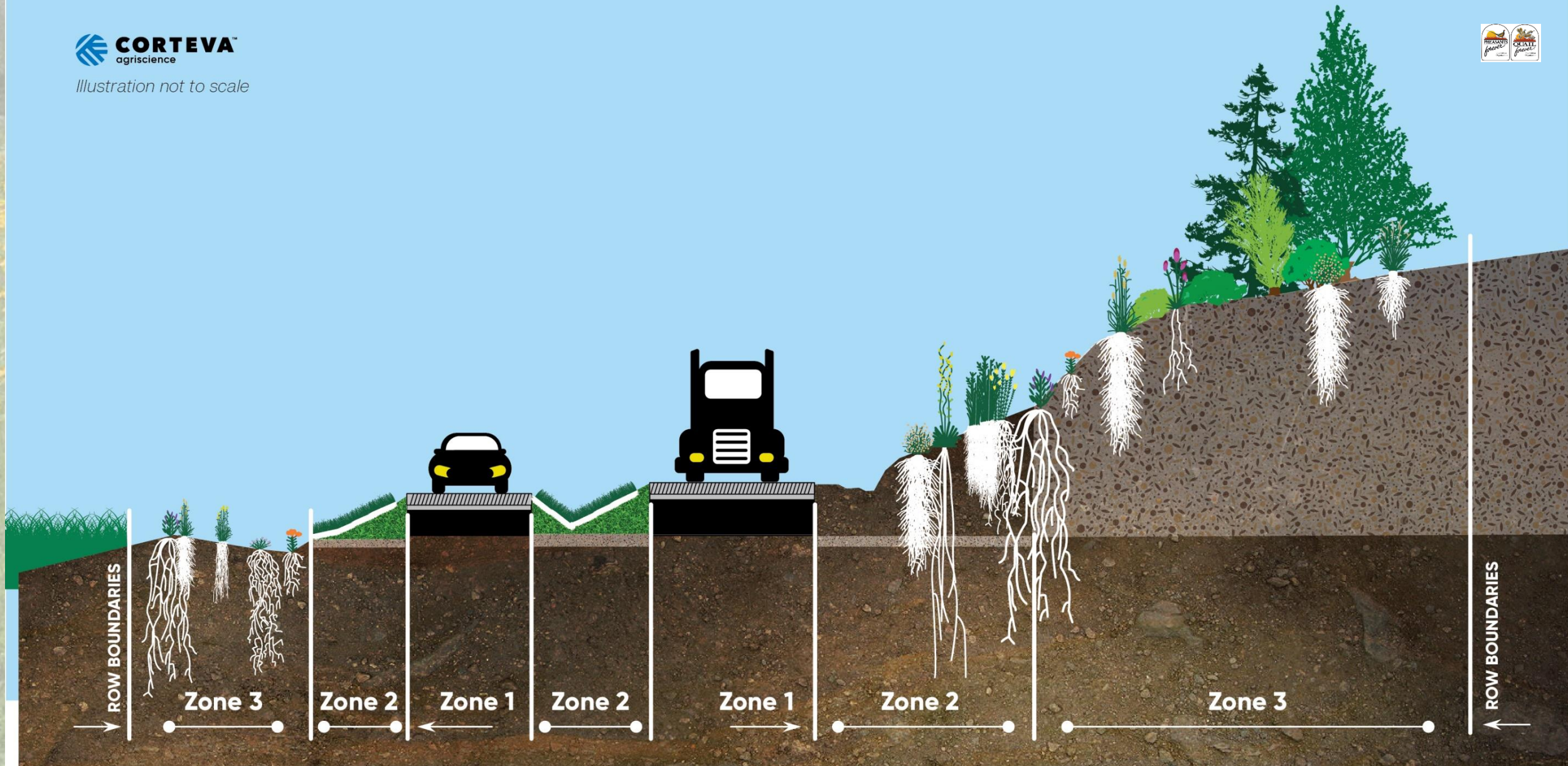
**BORDER  
ZONE**

**WIRE ZONE**

**BORDER  
ZONE**









# Contact Information

Michael Retterer - National Rights of Way & Energy Manager

[mretterer@pheasantsforever.org](mailto:mretterer@pheasantsforever.org)

937-631-1064

[pheasantsforever.org/rowe](http://pheasantsforever.org/rowe)

