



Nationwide Candidate Conservation Agreement

for Monarch Butterfly on Energy and Transportation Lands



Key Benefits

1. Protect your company or organization from risks related to regulatory uncertainty.
2. Avoid potential project delays or added maintenance costs.
3. Streamline regulatory processes that can add costs and impact construction timelines.
4. Generate positive public perception by demonstrating conservation commitments.
5. Encourage public-private partnerships that create a net-benefit for both conservation and business interests.



Why Participate?

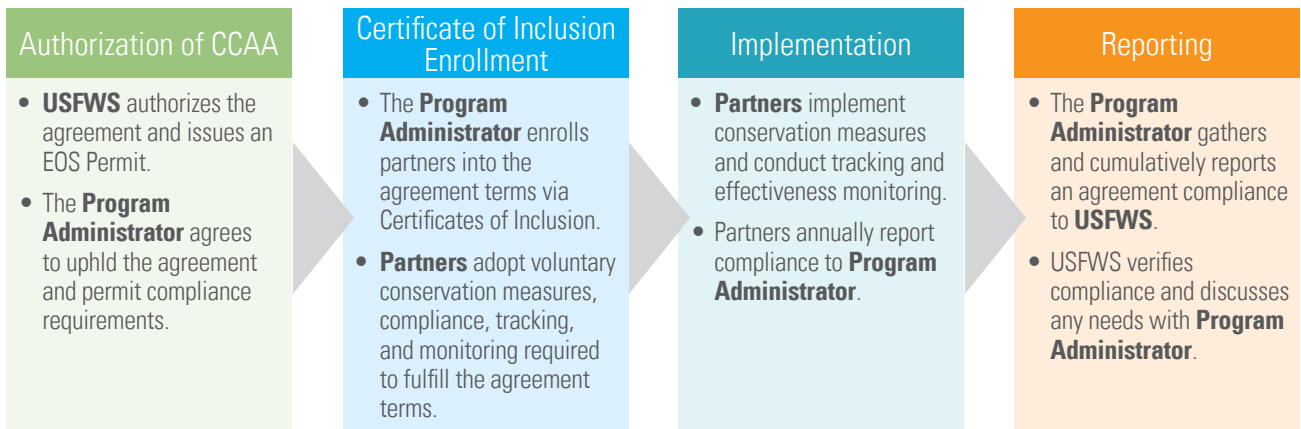
This Agreement will allow companies and organizations to perform certain covered activities, such as maintaining and modernizing existing infrastructure, and creating new habitat, on lands they own, lease, or manage.

Participating in the Agreement demonstrates that organizations are providing a net benefit to monarch butterflies across the lands they manage by conserving habitat through actions like reduced mowing, targeted herbicide treatments, or revegetation with native plants. These actions across the geographic scope of energy and transportation lands will make a meaningful contribution to

providing monarch habitat resources throughout the continental United States.

In exchange for commitments made, the Agreement will give assurances that no additional regulatory requirements will be requested by the U.S. Fish and Wildlife Service beyond the terms in the Agreement. The Agreement will help companies and agencies avoid costly delays and last-minute disruptions to construction and maintenance activities associated with species listing requirements.

How it Works?



Want to Enroll?

- **Contact UIC** (the Program Agreement Administrator) to discuss enrolling your organization and eligible lands.
- **Prepare an application** for enrollment within the Agreement.
- **UIC will review your application** to ensure that all information needed is included and verify that the organization can comply with all requirements of the Agreement.
- A **Certificate of Inclusion will be issued** to your organization once the application is approved and the certificate is executed by both your organization and UIC.

Applications can be submitted up until the effective listing date for monarchs (if or when that is determined).

Key Points

1. The monarch butterfly is in decline and may be listed in December 2020 under the Endangered Species Act. Listing the monarch could have a huge impact on how companies manage their lands.
2. The Agreement is an option for companies and agencies to benefit the monarch while giving certainty to their business operations.

3. Conservation measures in the Agreement are grounded in existing practices of energy and transportation organizations.

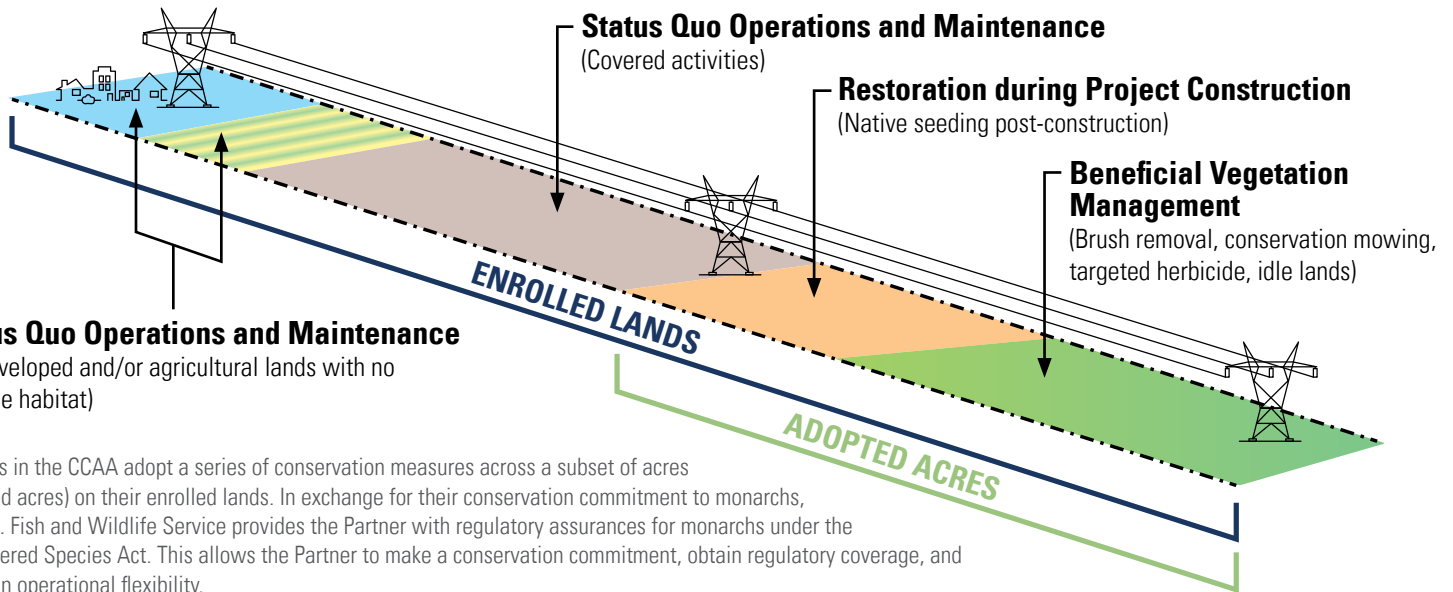
What Is Required for Enrollment?

As part of the application required for enrollment, your organization will need to provide a complete application containing information regarding the lands enrolled. Any information identified by the applicant as confidential, proprietary, or business-sensitive will maintain confidentiality between the applicant and UIC. See the Agreement for details:

1. Determine the extent of lands you want to enroll.
2. Calculate your “adopted acres target” based on your total enrolled lands estimate and applicable adoption rate(s).
3. Complete your application form.
4. Provide maps displaying the extent of enrolled lands.
5. Provide payment for the first year’s administrative fee as calculated by the Program Administrator.
6. Share any supplemental information necessary to support your application.



What the CCAA Looks Like On the Ground



Partners in the CCAA adopt a series of conservation measures across a subset of acres (adopted acres) on their enrolled lands. In exchange for their conservation commitment to monarchs, the U.S. Fish and Wildlife Service provides the Partner with regulatory assurances for monarchs under the Endangered Species Act. This allows the Partner to make a conservation commitment, obtain regulatory coverage, and maintain operational flexibility.

FOR MORE INFORMATION, CONTACT:

IRIS CALDWELL
ENERGY RESOURCES CENTER AT THE UNIVERSITY OF ILLINOIS AT CHICAGO
IRISCALD@UIC.EDU

DAN SALAS
CARDNO
DAN.SALAS@CARDNO.COM

