



# Monarch Larva Monitoring Project



Arboretum  
UNIVERSITY OF WISCONSIN-MADISON



MONARCH  
JOINT VENTURE

---

## Pandemic Opens Training Opportunities for Volunteer Monitors

March Monarch Meeting  
Tuesday, March 7

Julia Whidden, MLMP Coordinator



# Monarch Larva Monitoring Project



---

## Pandemic Opens Training Opportunities for Volunteer Monitors

*+ an update about Journey  
North through the  
pandemic!*



# About MLMP

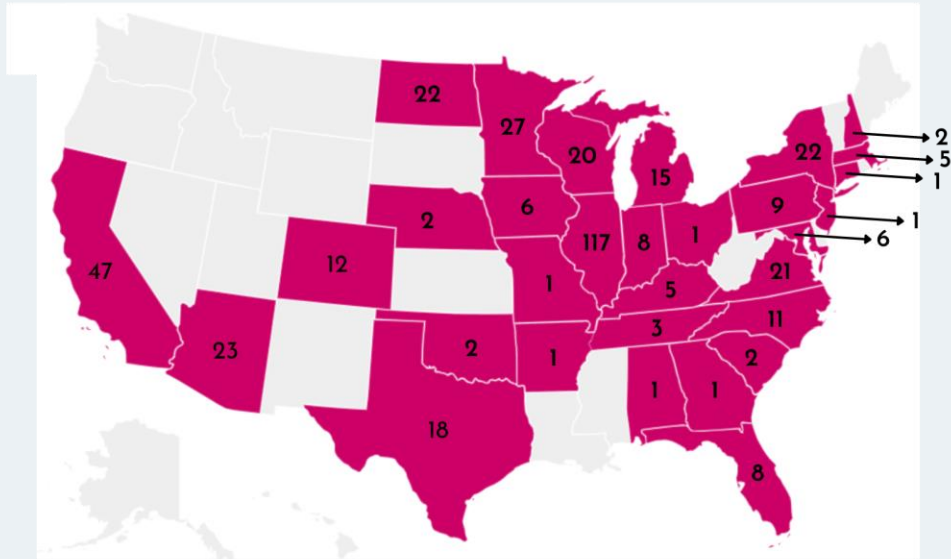
---

- Citizen science project started in 1997
- Collects **long-term data on larval monarch populations and milkweed habitat across North America**
- Citizen scientists find a site of milkweed (backyard, local park, etc.) and monitor it weekly for monarch larva
  - Report their findings to our data portal
  - Great project for all ages and used extensively in classrooms
- Data has contributed to nearly 30 peer-reviewed articles about monarchs and milkweed and the positive impact of citizen science



# Participation in MLMP

## MLMP Site Locations

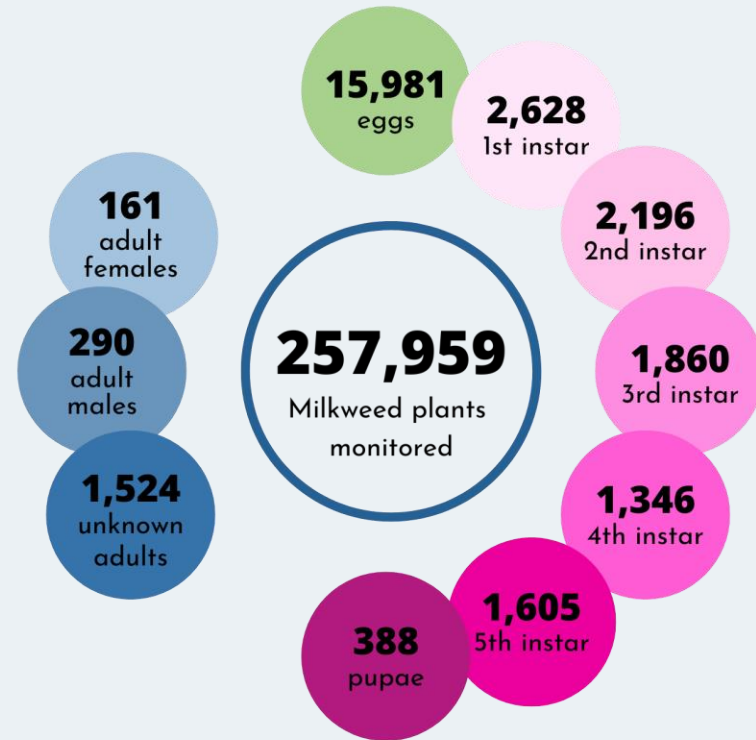


**424**  
Sites

**31**  
States

+ Puerto Rico  
+ 1 Canadian Province  
+ 2 New Zealander Regions

## MLMP Activity 1 Data: 2022 Summary



**15,981**  
eggs

**2,628**  
1st instar

**2,196**  
2nd instar

**1,860**  
3rd instar

**1,346**  
4th instar

**388**  
pupae

**1,605**  
5th instar

**161**  
adult  
females

**290**  
adult  
males

**1,524**  
unknown  
adults

**257,959**  
Milkweed plants  
monitored



# MLMP Training History

---

## PRE-PANDEMIC

- Training videos found for free on website, self-guided and self-paced
- Questions e-mailed to us
- Some small-scale in-person trainings offered by MLMP and trainers across the country

## 2020-2022

- Seven paid 4-hour training sessions offered online, led by monarch experts from the UW-Madison Arboretum (Dr. Karen Oberhauser) and MJV
  - Break-out rooms and Q&A periods allowed discussion between volunteers and experts and fostered sense of community
- Trained 430 volunteers from a much broader geographic area, including NZ
- In 2022, first time offering region-specific trainings (western states, southern states, northern states)





# Pandemic MLMP Training

---

- Post-program surveys = very positive response
  - Even from participants who have challenges with technology and the online format
  - Many attend just to learn about monarch biology and conservation but don't become citizen scientists → that's okay!
- Paid trainings offered fundraising opportunity
- Offering 3 online trainings again this spring
- **While online trainings lack opportunity for hands-on learning, still have a lot of educational and community-building value**



# Journey North Through The Pandemic



Nancy A. Sheehan (she | her | hers)  
Program Coordinator-Journey North  
UW-Madison Arboretum  
[nsheehan@wisc.edu](mailto:nsheehan@wisc.edu)



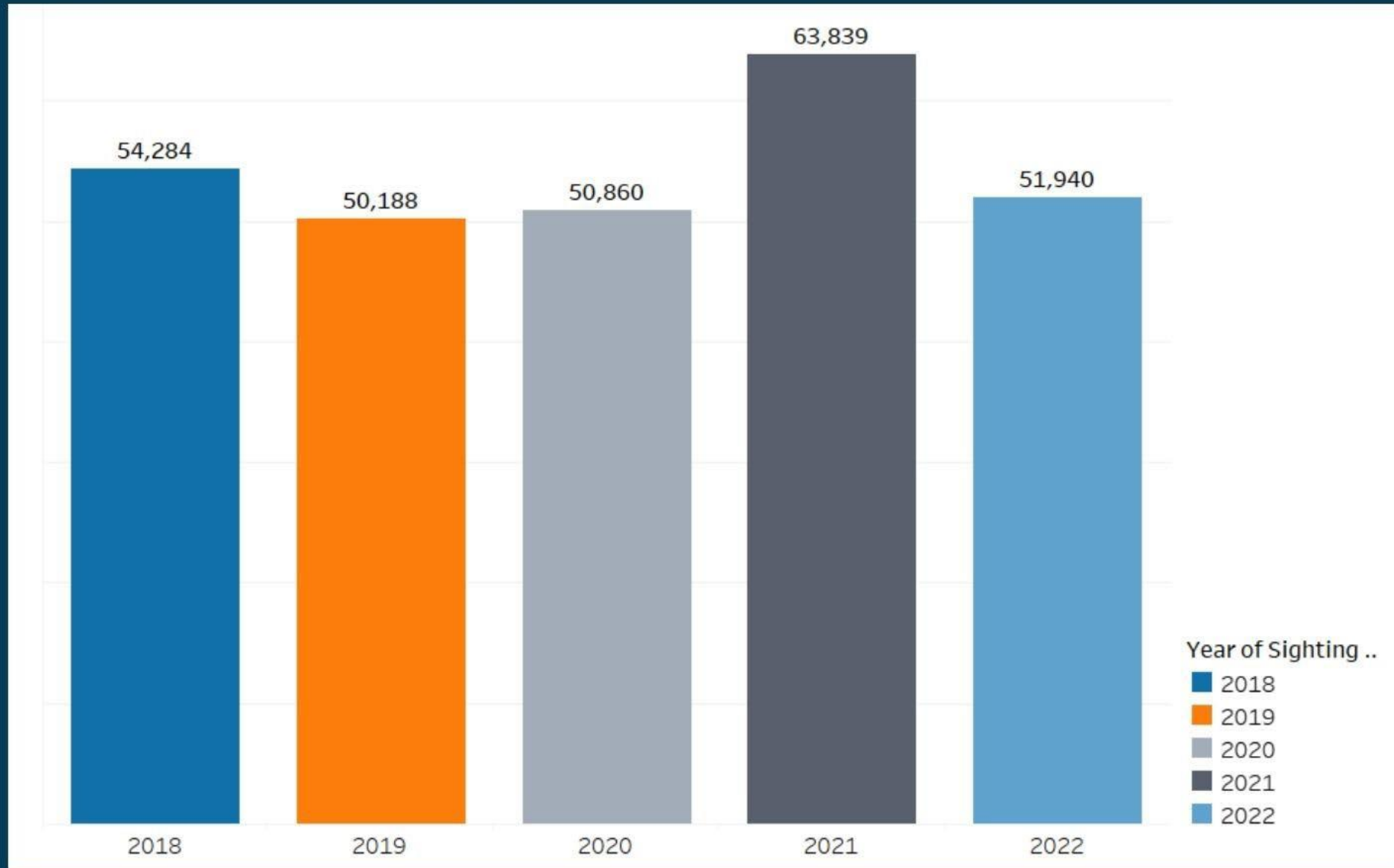
# Journey North's Mission

- Ignite interest in migratory species
- Raise awareness by sharing the stories of wildlife migration
- Contribute to the science of migration





# 2021 A Record Year for Observations



# Reflection & Action

● Pledged Shared with 36,000 subscribers

● Discussed From citizen science to participatory science / From citizen scientists to volunteers & observers

● Evaluated Inventoried JN educational materials & identified niche

● Extended Revamped selected JN educational materials for learning at home

● Launched "I am Journey North"

A Message From Journey North

We acknowledge that we must do more to form a more inclusive community.



Journey North

Educational Resources  
Review & Recommendations

