

VDOT'S ENROLLMENT INTO THE MONARCH CCAA



March Monarch Meeting

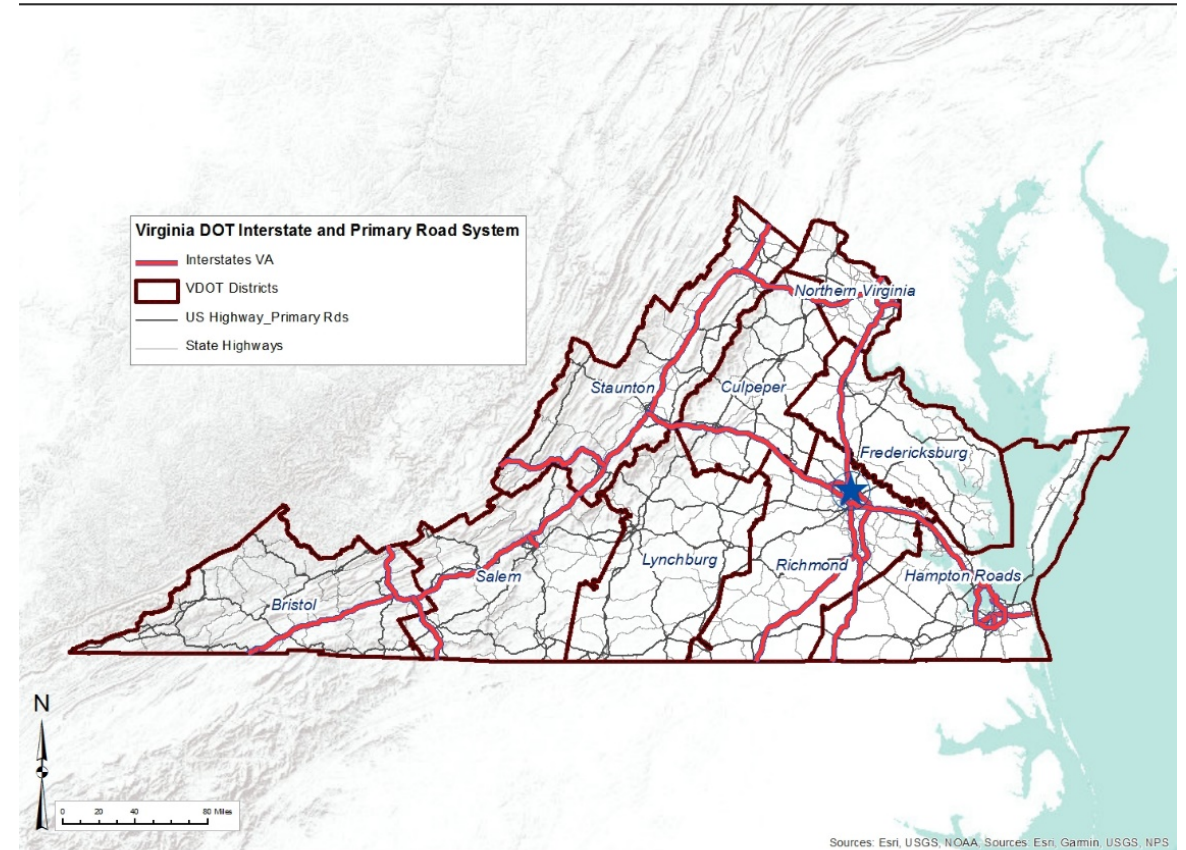
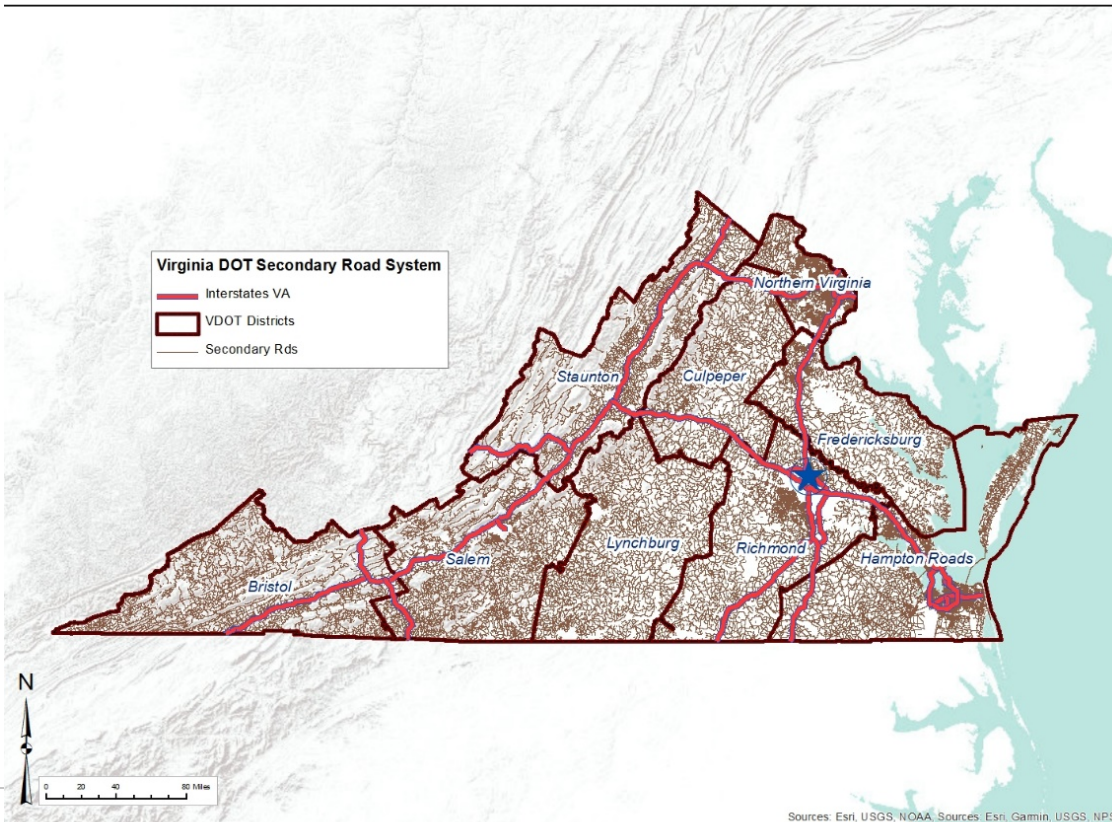
March 6-8, 2023

Susan Alexander - Environmental Specialist II



VDOT Organization and Roadways

- Central Office
- 9 Districts
 - 31 Residencies
 - 189 Area Headquarters



128, 770 lane-miles of roads statewide:

- Interstates (4-10 lanes): 5,540 lane-miles.
- Primary Roads (2-6 lanes): 21,997 lane-miles.
- Secondary Roads: 100,577 lane-miles.

Challenges

- Minimal mapping.
- ROW features, area, easements and management.
- Pervious vs. impervious areas.
- Decentralized organizationally.
- Locality concerns – unmowed = messy.
- Tracking what's being mowed and when.
- Costs.
- Training.
- Data collection.



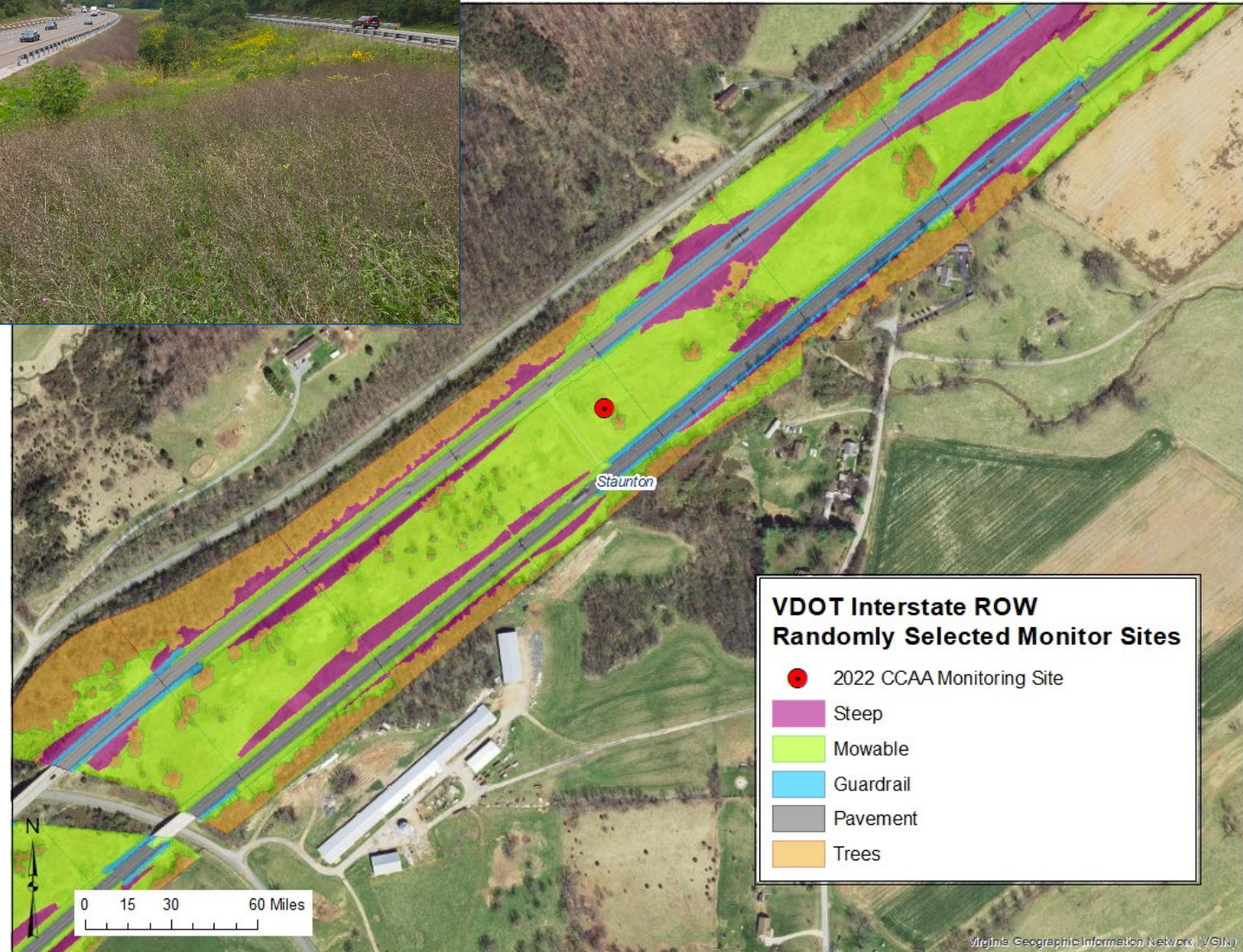
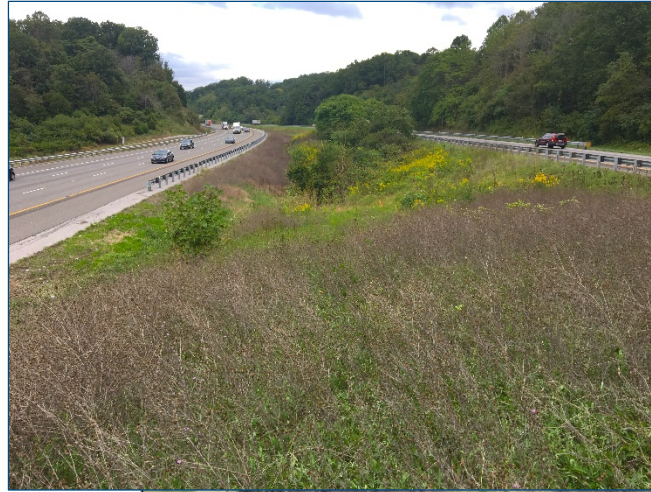
Internal Working Group – Maintenance and Environmental

- Collaborate on mowing and vegetation management practices.
- Opportunity to discuss the CCAA in details with roadside maintenance and potential concerns.
- ID where conservation mowing was already being done.
- Interstate mowing contracts – incorporate new mowing Best Practices into the contracts.
- Recognized the need for GIS mapping of roadway system.



First 3 Years

- Completed 3 years of biological effectiveness monitoring, with over 2155 adopted acres committed to the CCAA.
- ROWs mapped using LiDAR
- High Potential Zone mapping for listed plants and insects
- Research project evaluating roadside plant communities on 490 sites; 37 with milkweed. (Askew, Virginia Tech).
- Pollinator Habitat Program to establish larger plots with native seed mixes in 2023.



Land Stewardship

BLUE – Beneficial Land Use Encumbrances.

- Goal:
 1. Establish a central database for better tracking of encumbrances and commitments within VDOT ROWs.
 2. Improve awareness of committed areas during project planning and development.

Commitments may include:

- TMDL and MS4
- Wetland mitigation
- Pollinator habitat
- Aquatic Organism Passage
- Wildlife Corridor Action Plan



QUESTIONS



susan.alexander@vdot.virginia.gov
804-840-1084